

Lincoln[®] PRODUCTS
TOILET REPAIR
SECTION 3





Economy

Fits most toilet tanks.

| STOCK# | PACK | CASE | DESCRIPTION | UPC# |
|---------|------|------|-------------|--------------|
| 100909▲ | 1 | 6 | WHITE | 054374932740 |
| 100911▲ | 6 | | CHROME | 054374002573 |

Heavy Duty

Bold heavy look. Fits most toilet tanks.

| STOCK# | PACK | CASE | DESCRIPTION | MFR# | UPC# |
|---------|------|------|----------------|------|--------------|
| 100917▲ | 6 | | CHROME | | 054374002603 |
| 100919▲ | 6 | | POLISHED BRASS | | 054374002627 |

Fits most toilet tanks.

| | | | | | |
|-----------|---|--|-------------------|----------|--------------|
| M 130953▲ | 6 | | BRUSHED NICKEL | MB402BN | 054374138371 |
| M 130954▲ | 6 | | OIL RUBBED BRONZE | MB401ORB | 054374853588 |
| M 130955▲ | 6 | | POLISHED NICKEL | MB402PN | 054374291083 |

Universal Flush Lever

Fits most front, side and angle mount tanks. Trim-bend to fit.

| STOCK# | PACK | CASE | DESCRIPTION | UPC# |
|---------|------|------|----------------|--------------|
| 100990▲ | 1 | 6 | WHITE | 054374093274 |
| 100991▲ | 1 | 6 | CHROME | 054374409327 |
| 100992▲ | 1 | | BRUSHED NICKEL | 054374810932 |

Economy - Adjustable Length

Fits most toilet tanks. Has cut-off sections to adjust length between 4", 6" or 8".

| STOCK# | PACK | CASE | DESCRIPTION | UPC# |
|---------|------|------|-----------------------|--------------|
| 100924▲ | 6 | | CHROME PLATED PLASTIC | 054374105137 |
| 100926▲ | 6 | | WHITE PLASTIC | 054374105151 |

Old Style

Old Style pattern used on mid century toilet tanks.

| STOCK# | PACK | CASE | DESCRIPTION | UPC# |
|---------|------|------|-------------|--------------|
| 100927▲ | 6 | | CHROME | 054374959464 |

For American Standard®

For Glenwall (2093), Lexington (2006/2007) and Yorkville (2128/2130) toilet tanks.

| STOCK# | PACK | CASE | DESCRIPTION | MFR# | UPC# |
|---------|------|------|--------------|---------------|--------------|
| 100915▲ | 6 | | CHROME | | 054374062669 |
| 130904 | 12 | | OEM - CHROME | 738473-0020AP | 012611577741 |

For Hamilton, Cadet II and Cadet III American Standard® toilets.

| STOCK# | PACK | CASE | DESCRIPTION | UPC# |
|---------|------|------|--------------|--------------|
| 100950▲ | 6 | | 45° - CHROME | 054374130085 |

For Cadet American Standard® toilets.

| STOCK# | PACK | CASE | DESCRIPTION | UPC# |
|---------|------|------|--------------|--------------|
| 100961▲ | 6 | | 28° - CHROME | 054374138838 |

30 Degree Angle X 6". Fits Cadet® Prestige 2813.079 and 2313.075 tanks, Colony® 2388/2399 and 2359 tanks, Sonoma® 2359 tank, Tanks in the following series 4003/4061/4112/4096/4707/4010/4037/4114/4110/4310/4314 and 4392

| STOCK# | PACK | CASE | DESCRIPTION | MFR# | UPC# |
|---------|------|------|----------------|---------------|--------------|
| 130961▲ | 12 | | OEM 30° CHROME | 047192-0020AP | 012611577789 |



Decorative accessories provide showroom quality, brass construction, and advanced finish technology to ensure lasting beauty and durability.

▲ For **Proposition 65** warnings please refer to pages 27-39 at the end of this section.



For American Standard® (Continued)

Left Hand, 30 Degree.

| STOCK# | PACK | CASE | DESCRIPTION | MFR# | UPC# |
|--------|------|------|-------------|---------------|--------------|
| 130915 | 6 | | OEM CHROME | 047148-0020AP | 012611577796 |

Fits Savona® 2095.012 and 2097.3014 tanks, Cadet® 2100 and 2099 tanks and Celebrity® 4029 tank

| STOCK# | PACK | CASE | DESCRIPTION | MFR# | UPC# |
|--------|------|------|-------------|---------------|--------------|
| 130943 | 6 | | OEM CHROME | 047242-0020AP | 012611577864 |

Universal Fit. For use on most early tanks

| STOCK# | PACK | CASE | DESCRIPTION | MFR# | UPC# |
|--------|------|------|-------------|---------------|--------------|
| 130924 | 6 | | OEM CHROME | 738899-0020AP | 012611577727 |

| STOCK# | PACK | CASE | DESCRIPTION | MFR# | UPC# |
|--------|------|------|-------------|---------------|--------------|
| 130926 | 6 | | OEM WHITE | 738899-0200AP | 012611577710 |

Briggs®

Fits Briggs toilet tanks.

| STOCK# | PACK | CASE | DESCRIPTION | UPC# |
|---------|------|------|------------------------|--------------|
| 100955▲ | 6 | | WHITE WITH PLASTIC ARM | 054374946419 |

Eljer®

9-1/4" to fit Eljer® side mount toilet.

| STOCK# | PACK | CASE | DESCRIPTION | UPC# |
|---------|------|------|---------------------|--------------|
| 100925▲ | 6 | | CHROME PLATED BRASS | 054374105144 |

Fluidmaster®

This is a standard tank lever that will fit almost any tank, it can be trimmed and bent to fit most front, side and angle mount tanks.

| STOCK# | PACK | CASE | DESCRIPTION | MFR# | UPC# |
|---------|------|------|-------------|------|--------------|
| 271390▲ | 10 | | WHITE | 680 | 039961006806 |
| 271391▲ | 10 | | CHROME | 681 | 039961006813 |

For Kohler®

For Wellworth™ toilets.

| STOCK# | PACK | CASE | DESCRIPTION | MFR# | UPC# |
|-----------|------|------|---------------------|------------|--------------|
| 130913 | 3 | | OEM POLISHED CHROME | GP30324-CP | 650531630674 |
| 100913▲ | 6 | | POLISHED CHROME | | 054374062638 |
| M 130951▲ | 6 | | BRUSHED NICKEL | | 054374135554 |

For Cimarron™ toilets.

| STOCK# | PACK | CASE | DESCRIPTION | MFR# | UPC# |
|---------|------|------|-------------------|--------------|--------------|
| 130963▲ | 3 | | OEM CHROME PLATED | GP1034693-CP | 650531802712 |

Mansfield®/ Kilgore®/ Norris®

9" to fit above Manufacturer's toilet tanks using #210 or #211 Flush valves.

| STOCK# | PACK | CASE | DESCRIPTION | UPC# |
|---------|------|------|-----------------------|--------------|
| 100922▲ | 6 | | CHROME PLATED PLASTIC | 054374105113 |

10-1/4" to fit most standard models.

| STOCK# | PACK | CASE | DESCRIPTION | UPC# |
|---------|------|------|---------------------|--------------|
| 100923▲ | 6 | | CHROME PLATED BRASS | 054374105120 |

PROFLO®

For PROFLO® high efficiency toilets. PF9400 series.

| STOCK# | PACK | CASE | DESCRIPTION | MFR# | UPC# |
|-----------|------|------|----------------|---------|--------------|
| M 130962▲ | 12 | | BRUSHED NICKEL | MB422BN | 054374596119 |



Decorative accessories provide showroom quality, brass construction, and advanced finish technology to ensure lasting beauty and durability.

▲ For Proposition 65 warnings please refer to pages 27-39 at the end of this section.

Flush Levers and Tank Repair Kits



PROFLO®

Fits PROFLO® PF9412 series toilet tanks.

| STOCK# | PACK | CASE | DESCRIPTION | MFR# | UPC# |
|--------|------|------|-------------------------|-------------|--------------|
| 140960 | 1 | 6 | RIGHT HAND LEVER CHROME | PF9412TLRCP | 781889316436 |

Fits PROFLO® PF5112/PFCT toilet tanks

| | | | | | |
|--------|---|---|-------|--------------|--------------|
| 140990 | 1 | 6 | WHITE | PF5112TLWHPK | 054374995349 |
|--------|---|---|-------|--------------|--------------|

Fits PROFLO® PF3112/3212 toilets. Plastic.

| | | | | | |
|---------|---|---|--------------------|--|--------------|
| 100962▲ | 1 | 6 | 45° BRUSHED NICKEL | | 054374349098 |
|---------|---|---|--------------------|--|--------------|

Universal Rundle®

Fits Universal Rundle® #4014, #4016 & #4018 toilets.

| STOCK# | PACK | CASE | DESCRIPTION | UPC# |
|---------|------|------|-------------|--------------|
| 100920▲ | 6 | | CHROME | 054374062751 |

Toto®

| STOCK# | PACK | CASE | DESCRIPTION | MFR# | UPC# |
|---------|------|------|-----------------------------|-----------|--------------|
| 100807▲ | 6 | | FITS ST701/CST854/884 TANKS | THU004-CP | 054374391097 |
| 100808▲ | 6 | | FITS ST706 TANKS | THU061-CP | 054374910977 |
| 100809▲ | 6 | | FITS ST743S TANKS | THU068-CP | 054374109821 |
| 100810▲ | 6 | | FITS ST701/CST854/884 TANKS | THU004-BN | 054374181032 |
| 100811▲ | 6 | | FITS ST743S TANKS | THU068-BN | 054374810321 |
| 100812▲ | 6 | | FITS ST706 TANKS | THU061-BN | 054374222858 |

Tank Repair Kits



Toilet Tank Repair Kits

Includes all of the necessary components for fixing leaky toilet tanks. Kits include anti-siphon ballcock and flapper. Fast, easy way to repair leaky tanks.

| STOCK# | PACK | CASE | DESCRIPTION | UPC# |
|---------|------|------|----------------------------|--------------|
| 101015▲ | 4 | | WITH ADJUSTABLE FILL VALVE | 054374002832 |
| 101018▲ | 4 | | WITH 10" BALLCOCK | 054374002863 |

Universal Toilet Repair Kit

Fits most 2-piece toilet that use 2" flush valve. Complete kit to rebuild the inside of your toilet tank. Fill valve, flush valve with flapper, tank to bowl gasket and installation hardware.

| STOCK# | PACK | CASE | DESCRIPTION | UPC# |
|---------|------|------|-------------------|--------------|
| 101040▲ | 1 | | TOILET REPAIR KIT | 054374234189 |

Kohler® Toilet Tank Repair Kits

Conversion kit includes: Includes: Complete fill valve and flush valve assemblies. For Rialto™ 3402, San Raphael™ 3397 and Pillow Talk™ 3378 toilets.

| STOCK# | PACK | CASE | DESCRIPTION | MFR# | UPC# |
|--------|------|------|------------------------------|--------------|--------------|
| 131016 | 1 | | OEM RETROFIT FLOAT VALVE KIT | K84499 BOXED | 040688953830 |

Fits Kohler® Rialto™ toilets. Kit includes: Complete fill valve and flush valve assemblies. For Rialto™ 3402, San Raphael™ 3397 and Pillow Talk™ 3378 toilets.

| STOCK# | PACK | CASE | DESCRIPTION | UPC# |
|---------|------|------|-------------|--------------------|
| 100815▲ | 14 | | REBUILD KIT | BOXED 054374606146 |



Fluidmaster®

Includes both the 400A anti-siphon toilet fill valve and the 501 toilet flapper. This product is the perfect combination for 3.5 GPF toilets or larger. This is the #1 solution to fix your noisy and running toilet.

| STOCK# | PACK | CASE | DESCRIPTION | MFR# | UPC# |
|---------|------|------|-----------------|--------|--------------|
| 271404▲ | 14 | | TOILET TANK KIT | 400CRP | 039961402707 |

PerforMax® Toilet Fill Valve, Flapper and Click Seal Connector Kit is the premium solution to repair your toilet at the most common leak points! This kit works with all 2" toilets including Kohler®, Toto® and American Standard®.

| | | | | | |
|---------|---|--|------------------------|------------|--------------|
| 271407▲ | 1 | | FILL VALVE AND FLAPPER | 400ARHRFCS | 039961009692 |
|---------|---|--|------------------------|------------|--------------|

Complete toilet tank repair kit for 1.6 gallon per flush toilets. Contains a Toilet Flush Valve with an adjustable water saving toilet flapper, a toilet fill valve, a chrome tank lever, and the bolts and gaskets for installation.

| | | | | | |
|---------|---|----|---------------------|-------|--------------|
| 271408▲ | 5 | 30 | COMPLETE REPAIR KIT | 400AK | 039961014009 |
|---------|---|----|---------------------|-------|--------------|

Korky®

QuietFILL® Fill Valve & Premium Flapper Kit. Universal design to fit all brands and features a wide range of adjustability to fit most 2-piece and 1-piece toilets.

| STOCK# | PACK | CASE | DESCRIPTION | MFR# | UPC# |
|--------|------|------|-----------------|-------|--------------|
| 270610 | 1 | | TANK REPAIR KIT | 818BP | 749306818017 |

Ballcocks

Anti-siphon toilet tank valves prevent back siphonage and contamination of your drinking water.



One Piece Toilet Ballcock

Anti-Siphon Valve. 1B1-X Fits Kohler, American Standard, Briggs, Crane, Eljer, Norris & Universal Rundle.

| STOCK# | PACK | CASE | DESCRIPTION | UPC# |
|---------|------|------|--------------------|--------------|
| 100999▲ | 6 | | 10" 1B1-X BALLCOCK | 054374055807 |



Adjustable

Fully height adjustable anti-siphon valve with adjustable float. One size fits all, the telescoping riser adjusts to tanks of varying height.

| STOCK# | PACK | CASE | DESCRIPTION | UPC# |
|---------|------|------|-----------------------|--------------|
| 100996▲ | 6 | | ADJUSTABLE FILL VALVE | 054374002641 |



Standard

Includes locknut, ballcock washer, coupling nut with washer, refill tube and float arm.

| STOCK# | PACK | CASE | DESCRIPTION | UPC# |
|---------|------|------|-----------------|--------------|
| 100997▲ | 6 | | 10" ANTI-SIPHON | 054374002658 |
| 100998▲ | 6 | | 12" ANTI-SIPHON | 054374002665 |



Kohler® Toilet Ballcocks

For Cimarron™ toilets. This fill valve is adjustable and can be used on most toilets. It works in both one- and two-piece toilets. Standard fill technology.

| STOCK# | PACK | CASE | DESCRIPTION | MFR# | UPC# |
|--------|------|------|-----------------------------|-----------|--------------|
| 130702 | 3 | 24 | OEM FILL VALVE - GRAY SHANK | GP1138930 | 650531935076 |

For Wellworth™ toilets. This fill valve is for all Class Five™ toilets. Adjustable bowl fill technology.

| | | | | | |
|--------|---|----|------------------------------|-----------|--------------|
| 130704 | 3 | 24 | OEM FILL VALVE - BLACK SHANK | GP1083167 | 650531688415 |
|--------|---|----|------------------------------|-----------|--------------|

Fits Kohler® Rialto™ 1 piece toilets. Old style.

| | | | | | |
|---------|---|--|---------------------|--|--------------|
| 100993▲ | 6 | | ANTISIPHON BALLCOCK | | 054374057375 |
|---------|---|--|---------------------|--|--------------|

Fits various 2" flappers, 1 piece low profile toilets.

| | | | | | |
|--------|---|--|------------------------------|-----------|--------------|
| 130994 | 3 | | OEM FILL VALVE - WHITE SHANK | GP1068030 | 885612353276 |
|--------|---|--|------------------------------|-----------|--------------|



Anti-Siphon Mini Fill Valve

| STOCK# | PACK | CASE | DESCRIPTION | UPC# |
|---------|------|------|-------------------|--------------|
| 101007 | 6 | | VALVE ONLY | 054374782154 |
| 101008▲ | 6 | | VALVE AND FLAPPER | 054374419371 |

Fluidmaster®

This is an anti-siphon fill valve with adjustable height from 9" to 14".

| STOCK# | PACK | CASE | DESCRIPTION | MFR# | UPC# |
|---------|------|------|------------------------------|------|--------------|
| 271400▲ | 25 | | ADJUSTABLE FILL VALVE 9"-14" | 400A | 039961000026 |

The Leak Sentry® device allows you to save water in two ways. It keeps your toilet from refilling if the tank has a leak and keeps the fill valve from turning on, which prevents more water from leaking out. The valve has a refill adjuster to be sure the correct amount of water enters the bowl.

| STOCK# | PACK | CASE | DESCRIPTION | MFR# | UPC# |
|---------|------|------|--|------|--------------|
| 271401▲ | 14 | | ADJUSTABLE FILL VALVE 9"-14" WITH LEAK SENTRY 400LSR | | 039961415080 |

The Fluidmaster PerformAX® Fill Valve with Leak Sentry® is the quietest and most powerful fill valve on the market and it also includes leak detection. Your toilet is a precision-engineered appliance and is designed to work on a specific amount of water. The fill valve is the engine of this appliance; it drives flush performance and makes water saving possible by making sure that the right amount of water is used to flush the toilet. The Leak Sentry® device allows you to save water in two ways. It keeps your toilet from refilling if the tank has a leak and keeps the fill valve from turning on, which prevents more water from leaking out. The valve has a refill adjuster to be sure the correct amount of water enters the bowl.

| STOCK# | PACK | CASE | DESCRIPTION | MFR# | UPC# |
|---------|------|------|------------------------------|---------|--------------|
| 271409▲ | 10 | | ADJUSTABLE FILL VALVE 9"-14" | 400ARHR | 039961702456 |

This toilet fill valve is specifically for the Glacier Bay flapperless toilets as well as Niagara Conservation's flapperless toilets. It replaces the original fill valve in both these brands of flapperless toilets

| STOCK# | PACK | CASE | DESCRIPTION | MFR# | UPC# |
|---------|------|------|------------------------|------|--------------|
| 271417▲ | 4 | | FLAPPERLESS FILL VALVE | 703A | 039961371348 |

Korky®

A universal design to fit all brands and features a wide range of adjustability to fit most 2-piece and 1-piece toilets.

| STOCK# | PACK | CASE | DESCRIPTION | MFR# | UPC# |
|--------|------|------|-----------------------------|------|--------------|
| 270600 | 24 | | ADJUSTABLE 7-3/4" - 13-1/2" | 528 | 749306528022 |

Fits TOTO® G-Max and Power Gravity Fill Valves.

| | | | | | |
|--------|---|--|-----------------------------|------|--------------|
| 270700 | 5 | | ADJUSTABLE 7-3/4" - 13-1/2" | 528T | 049057102954 |
|--------|---|--|-----------------------------|------|--------------|

PROFLO®

Fill valve for PF9412 toilet tanks.

| STOCK# | PACK | CASE | DESCRIPTION | MFR# | UPC# |
|--------|------|------|-------------|------------|--------------|
| 143384 | 1 | 6 | FILL VALVE | PF9412FLPK | 781889183038 |

Fill valve for PF5112 toilet tanks.

| STOCK# | PACK | CASE | DESCRIPTION | MFR# | UPC# |
|---------|------|------|-------------|------------|--------------|
| 143388▲ | 1 | 6 | FILL VALVE | PF5112FLPK | 781889182949 |



Master Ballcock Plunger Assembly

Replacement plunger & washers for Coast and Sears plastic ballcocks.

| STOCK# | PACK | CASE | DESCRIPTION | MFR# | UPC# |
|--------|------|------|------------------|------|--------------|
| 101000 | 6 | 144 | PLUNGER ASSEMBLY | | 054374002672 |



1B1-X Ballcock Top for One-Piece Toilets

Plastic replacement fits Coast 1B1-X ballcocks. Includes plunger and washers.

| STOCK# | PACK | CASE | DESCRIPTION | UPC# |
|---------|------|------|----------------------|--------------|
| 101035▲ | 6 | 36 | PLASTIC TOP ASSEMBLY | 054374055586 |



1B1-X Ballcock Plunger Assembly for One-Piece Toilets

Replacement plunger and washers for Coast 1B1-X ballcocks.

| STOCK# | PACK | CASE | DESCRIPTION | MFR# | UPC# |
|---------|------|------|------------------|------|--------------|
| 101034▲ | 6 | 36 | PLUNGER ASSEMBLY | | 054374055579 |



Hoov-R-Line Ballcock Top

Plastic replacement fits Hoov-R-Line A-1, A-60, BR-5, A-50, A-51 and A-52 ballcocks. Includes plunger & washers.

| STOCK# | PACK | CASE | DESCRIPTION | UPC# |
|---------|------|------|----------------------|--------------|
| 101041▲ | 6 | 48 | PLASTIC TOP ASSEMBLY | 054374055531 |



Fluidmaster®

| STOCK# | PACK | CASE | DESCRIPTION | MFR# | UPC# |
|---------|------|------|-------------------------------|------|--------------|
| 271302▲ | 10 | | REFILL TUBE ASSEMBLY AND CLIP | 218 | 039961000057 |
| 271304▲ | 10 | | 200A/400A SEAL | 242 | 039961000064 |
| 271307▲ | 10 | | NEW STYLE 400A CAP ASSEMBLY | 385 | 039961803528 |



Fluidmaster®

Fits 200/400A Fill Valves

| STOCK# | PACK | CASE | DESCRIPTION | UPC# |
|--------|------|------|------------------|--------------|
| 101019 | 1 | | REPLACEMENT SEAL | 054374472376 |

Ballcock Supply Washer Kit

Includes shank washer, coupling nut washer and friction ring to connect most supply tubes to ballcock shanks.

| STOCK# | PACK | CASE | DESCRIPTION | UPC# |
|--------|------|------|------------------------------|--------------|
| 101006 | 6 | 144 | BALLCOCK SUPPLY LINE WASHERS | 054374002740 |



5/8" Ballcock Supply Coupling Nut

Fits current style ballcocks. Includes cone washer and brass friction ring for 1/2" and 7/16" supply tube.

| STOCK# | PACK | CASE | DESCRIPTION | UPC# |
|---------|------|------|--------------------|--------------|
| 101516▲ | 6 | 144 | SHANK NUT ASSEMBLY | 054374004799 |



5/8" Ballcock Lock Nut & Washer

Fits most ballcock shanks.

| STOCK# | PACK | CASE | DESCRIPTION | UPC# |
|--------|------|------|-------------|--------------|
| 101802 | 6 | 144 | SHANK NUT | 054374004898 |



Ballcock Nut

Fits ballcock shank.

| STOCK# | PACK | CASE | DESCRIPTION | UPC# |
|---------|------|------|--------------------|--------------|
| 101517▲ | 6 | 144 | THREAD X 1/2" TUBE | 054374464197 |

Ballcock Repair Parts and Flappers



Float Rods

Solid brass. Connects float to the tank fill valve.

| STOCK# | PACK | CASE | DESCRIPTION | UPC# |
|---------|------|------|-------------|--------------|
| 100907▲ | 12 | 144 | 8" | 054374002542 |
| 100908▲ | 12 | 144 | 9" | 054374002559 |
| 100910▲ | 12 | 144 | 10" | 054374002566 |

Ballcock Float

| STOCK# | PACK | CASE | DESCRIPTION | UPC# |
|--------|------|------|-------------|--------------|
| 272345 | 1 | | 4" X 5" | 054374142507 |

Ballcock Washers

Washer with hole.

| STOCK# | PACK | CASE | DESCRIPTION | UPC# |
|--------|------|------|-------------------------|------------------------|
| 128504 | 12 | 144 | EW-18 3/16" 7/16" .135" | 2 PER BAG 054374431090 |
| 128506 | 12 | 144 | EW-20 1/8" 1/2" 1/8" | 2 PER BAG 054374109067 |
| 128508 | 12 | 144 | EW-23 5/16" 27/32" 1/8" | 2 PER BAG 054374906796 |

Cup rubber washer.

| | | | | |
|--------|----|-----|-----------------------|------------------------|
| 128512 | 12 | 144 | EW-42 1/4" 5/16" 1/8" | 2 PER BAG 054374067961 |
|--------|----|-----|-----------------------|------------------------|

Packing washers.

| | | | | |
|--------|----|-----|------------------------------|------------------------|
| 128688 | 12 | 144 | W-38 1/2" 13/16" RUBBER | 2 PER BAG 054374914432 |
| 128689 | 12 | 144 | W-39 1/2" 27/32" C.I. RUBBER | 2 PER BAG 054374144334 |

Flappers



Toilet Flapper with Chain

These durable vinyl flappers fit plastic flush valves.

| STOCK# | PACK | CASE | DESCRIPTION | UPC# |
|---------|------|------|--|--------------|
| 101009▲ | 6 | | FLAPPER WITH CHAIN | 054374002771 |
| 113001▲ | 6 | 72 | FLAPPER WITH CHAIN BAGGED | 054374061082 |
| 101010▲ | 12 | | 3 WAY FLAPPER WITH CHAIN - FITS MOST TOILETS | 054374002788 |

Toilet Flapper with Strap

| STOCK# | PACK | CASE | DESCRIPTION | UPC# |
|--------|------|------|--------------------|--------------|
| 101001 | 1 | | FLAPPER WITH STRAP | 054374447237 |

Flapper for Hard Water

Red with special chemical resistance to hard water, mineral and alkali. Fits most applications.

| STOCK# | PACK | CASE | DESCRIPTION | UPC# |
|---------|------|------|-------------|--------------|
| 101090▲ | 6 | | RED FLAPPER | 054374105182 |

Water Saver Flappers

Adjusts water use. Clearing the toilet in one flush, using the least amount of water. Chemical resistant.

| STOCK# | PACK | CASE | DESCRIPTION | UPC# |
|--------|------|------|---------------------|--------------|
| 101091 | 12 | | FOR 2" VALVES - RED | 054374103294 |
| 101092 | 6 | | UNIVERSAL - RED | 054374033096 |



PROFLO®

Fits PF9412 toilet tanks.

| STOCK# | PACK | CASE | DESCRIPTION | MFR# | UPC# |
|---------|------|------|--------------------|------------|--------------|
| 141021▲ | 1 | 6 | FLAPPER WITH CHAIN | PF9412FRPK | 781889183045 |

Fits PF5112/PFCT toilet tanks.

| | | | | | |
|---------|---|----|---------|------------|--------------|
| 143372▲ | 1 | 12 | FLAPPER | PF5112FRPK | 781889182956 |
|---------|---|----|---------|------------|--------------|

American Standard®

Flapper for Cadet® 3 and other toilets. 1.6 GPF

| STOCK# | PACK | CASE | DESCRIPTION | MFR# | UPC# |
|--------|------|------|-------------|---------------|--------------|
| 131094 | 6 | | OEM FLAPPER | 738920-0070AP | 012611577703 |

Float adjusts on beaded chain to accommodate a wide range of toilets

| | | | | | |
|--------|----|--|-------------|--------------------|--------------|
| 131093 | 12 | | OEM FLAPPER | 7381129-200.0070AP | 012611577758 |
|--------|----|--|-------------|--------------------|--------------|

Flapper for Coast Certain Flush

New style flapper. Plastic with rubber seal ring.

| STOCK# | PACK | CASE | DESCRIPTION | UPC# |
|---------|------|------|-------------|--------------|
| 101046▲ | 12 | | FLAPPER | 054374057382 |

Flapper for Coast/Hoover

Blue vinyl with chain.

| STOCK# | PACK | CASE | DESCRIPTION | UPC# |
|--------|------|------|-------------|--------------|
| 101099 | 12 | | FLAPPER | 054374156573 |

Flapper for Eljer® Low Flush

Plastic with foam float and rubber seal ring.

| STOCK# | PACK | CASE | DESCRIPTION | UPC# |
|---------|------|------|-------------|--------------|
| 101088▲ | 12 | | FLAPPER | 054374097173 |

Tilt Valve

Fits Western LoBoy counter balance flush valve.

| STOCK# | PACK | CASE | DESCRIPTION | UPC# |
|---------|------|------|-------------------------|--------------|
| 100948▲ | 6 | | BUCKET/BALANCE ASSEMBLY | 054374091676 |

Flappers for Toto®

| STOCK# | PACK | CASE | DESCRIPTION | UPC# |
|---------|------|------|---------------------------|--------------|
| 101077▲ | 6 | | FOR G-MAX™ - RED | 054374886586 |
| 101078▲ | 6 | | FOR POWER GRAVITY™ - BLUE | 054374865864 |

Kohler® 1.6 Gallon 1pc Toilets

For all 1.6 gallon flush 1 piece Rialto, San Raphael, Rosario and Martine Lites. Includes chain float.

| STOCK# | PACK | CASE | DESCRIPTION | MFR# | UPC# |
|---------|------|------|----------------------------|---------|--------------|
| 131089 | 5 | | OEM FLAPPER 1.6" - 1 PIECE | GP83064 | 650531662699 |
| 101089▲ | 12 | | FLAPPER FOR KOHLER® | K83064 | 054374097135 |

Fin Type. For various one piece Ingenium™ toilets (84314, 84138, 85655) including Devonshire™ one piece, Rialto™, Gabrielle™, Santa Rosa™ and Kathryn™.

| | | | | | |
|--------|---|--|----------------------------------|-----------|--------------|
| 131096 | 5 | | OEM REPLACES 84314,84138 & 85655 | GP1078440 | 650531662668 |
|--------|---|--|----------------------------------|-----------|--------------|

Kohler® 1.6 Gallon 2pc Toilets

Fits Lite™ toilets. Includes float.

| STOCK# | PACK | CASE | DESCRIPTION | UPC# |
|---------|------|------|-------------|--------------|
| 101047▲ | 12 | | FLAPPER | 054374057399 |





Kohler® Rialto™, San Raphael™ and Revival™

| STOCK# | PACK | CASE | DESCRIPTION | MFR# | UPC# |
|---------|------|------|----------------------|---------|--------------|
| 131095 | 5 | | OEM FLAPPER ASSEMBLY | GP84995 | 650531662705 |
| 101095▲ | 12 | | FLAPPER FOR KOHLER® | K84995 | 054374121984 |

Kohler® Older 3.5 Gallon Toilets

| STOCK# | PACK | CASE | DESCRIPTION | MFR# | UPC# |
|---------|------|------|-------------------|---------------|--------------|
| 131097 | 5 | | OEM RED BALL | GP49114 | 650531662682 |
| 101044▲ | 12 | | FLAPPER OLD STYLE | K87449/K49114 | 054374057351 |

2" flapper without float used in various 3.5 GPF and older toilets.

| | | | | | |
|--------|---|--|-----------------------|----------|--------------|
| 131044 | 5 | | OEM FLAPPER OLD STYLE | KGP87449 | 650531688453 |
|--------|---|--|-----------------------|----------|--------------|

Kohler® One Piece Toilets

For Portrait.

| STOCK# | PACK | CASE | DESCRIPTION | MFR# | UPC# |
|--------|------|------|-------------|---------|--------------|
| 131074 | 5 | | OEM FLAPPER | GP89825 | 650531662712 |

For Class 5 - Portrait.

| STOCK# | PACK | CASE | DESCRIPTION | MFR# | UPC# |
|--------|------|------|-------------|-----------|--------------|
| 131075 | 5 | | OEM FLAPPER | GP1060740 | 650531662651 |

For Class 5 - Gabrielle.

| STOCK# | PACK | CASE | DESCRIPTION | MFR# | UPC# |
|--------|------|------|-------------|-----------|--------------|
| 131076 | 5 | | OEM FLAPPER | GP1067183 | 650531802705 |

For Class 5 - Cimarron and Memoirs.

| STOCK# | PACK | CASE | DESCRIPTION | MFR# | UPC# |
|--------|------|------|-------------|-----------|--------------|
| 131078 | 5 | | OEM FLAPPER | GP1039444 | 650531662620 |

Kohler® Two Piece Toilets

For Class 5 - Memoirs™, Cimarron™, Bancroft™, Devonshire.

| STOCK# | PACK | CASE | DESCRIPTION | MFR# | UPC# |
|--------|------|------|--------------------------------|-----------|--------------|
| 131098 | 5 | | OEM REPLACES 1016546 & 1042313 | GP1078441 | 650531662675 |

For Vintage™, Wellington™, Cayuga™, Wellesly™, Bolton™, Wellworth™, Highline™.

| STOCK# | PACK | CASE | DESCRIPTION | MFR# | UPC# |
|--------|------|------|--------------------|-----------|--------------|
| 130720 | 5 | | OEM WITH FLOAT KIT | GP1079948 | 650531803146 |

For Wellworth - Flapper Seal

Fits Kohler®, and Coast plastic flappers and Western LoBoy counter balance flush valve.

| STOCK# | PACK | CASE | DESCRIPTION | UPC# |
|--------|------|------|--------------|--------------|
| 100949 | 6 | 72 | FLAPPER SEAL | 054374091683 |

Fluidmaster®

The 500 Universal Toilet Flapper is best for use in 3.5 gallons per flush toilets made before 1994.

| STOCK# | PACK | CASE | DESCRIPTION | MFR# | UPC# |
|---------|------|------|----------------------------------|------|--------------|
| 271500▲ | 21 | | UNIVERSAL FLAPPER WITH MICROBAN® | 500 | 039961005007 |

The 501 Universal Longer Lasting Chlorine-Resistant Toilet Flapper is best for use in 3.5 gallons per flush toilets made before 1994.

| STOCK# | PACK | CASE | DESCRIPTION | MFR# | UPC# |
|---------|------|------|----------------------------------|------|--------------|
| 271501▲ | 21 | | UNIVERSAL FLAPPER WITH MICROBAN® | 501 | 039961005014 |

Flappers, Tank Balls and Seat Discs

Fluidmaster® (Continued)

Long Lasting Water-Saving Toilet Flapper for 2" flush valves. It works best in toilets with 1.28 - 3.5 gallons per flush or higher. It is adjustable for optimum performance and water savings, is chlorine resistant, and has a solid frame for ultimate reliability.



| STOCK# | PACK | CASE | DESCRIPTION | MFR# | UPC# |
|---------|------|------|-----------------------------------|--------|--------------|
| 271502▲ | 12 | | ADJUSTABLE FLAPPER WITH MICROBAN® | 502 | 039961005021 |
| 271504▲ | 1 | 4 | 3" UNIVERSAL FLAPPER | 5403P4 | 039961015433 |
| 271555▲ | 8 | | FLUSHER FIXER KIT WITH MICROBAN® | 555C | 039961000392 |

Fixes a deteriorated flush valve seat without dealing with any messy glue or removing the tank.

Korky®

Rubber construction. The flapper is universal and fits 2" plastic flush valves.



| STOCK# | PACK | CASE | MFR# | DESCRIPTION | MFR# | UPC# |
|--------|------|------|------|-----------------|--------|--------------|
| 273054 | 1 | 72 | | FLAPPER - BLACK | 54BP | 049057005491 |
| 273055 | 1 | 72 | | FLAPPER - RED | 2001BP | 049057200193 |
| 273059 | 1 | | | 1.6 GAL FLAPPER | 16BP | 049057001691 |

Long lasting red rubber resists chlorine, bacteria, city water treatment, hard water, and well water.

Designed for toilets manufactured since 1994, It can be adjusted for a strict 1.6 gallon flush.

Tank Balls & Seat Discs

Deluxe Tank Ball

Has bottom weighted guide for positive shut-off action. Comes complete with brass lift wire.



| STOCK# | PACK | CASE | DESCRIPTION | UPC# |
|---------|------|------|-------------|--------------|
| 101011▲ | 12 | | TANK BALL | 054374002795 |

Economy Tank Ball

Fits all popular size flush valves.



| STOCK# | PACK | CASE | DESCRIPTION | UPC# |
|---------|------|------|-------------|--------------|
| 101012▲ | 12 | | TANK BALL | 054374002801 |

American Standard® Seat Discs

Fits American Standard® tilt flush valves.



| STOCK# | PACK | CASE | DESCRIPTION | MFR# | UPC# |
|---------|------|------|--------------------------------------|---------------|--------------|
| 131014 | 6 | 72 | OEM SNAP ON STYLE W/SCREW-IN ADAPTER | 033643-0070AP | 012611577819 |
| 101013▲ | 6 | 72 | SCREW-ON STYLE | | 054374002818 |
| 101014▲ | 6 | 72 | SNAP-ON STYLE | | 054374002825 |

Eljer® Tank Ball

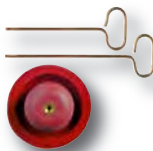
Fits Eljer® Touch Flush™ toilets.



| STOCK# | PACK | CASE | DESCRIPTION | UPC# |
|---------|------|------|-------------|--------------|
| 101087▲ | 12 | | TANK BALL | 054374091690 |

Kohler® Tank Ball

Fits Champlain™ (3390), Palarre™ (3383), Pompton™ (3400), Rochelle™ (3385) toilets.



| STOCK# | PACK | CASE | DESCRIPTION | MFR# | UPC# |
|--------|------|------|----------------|---------|--------------|
| 131092 | 5 | | OEM FLUSH BALL | GP88921 | 650531688392 |

Accessories and Flush Valves



Chain for Flapper Tank Balls

Replacement chain for deluxe "3-Way" flapper and other chain-type flapper tank balls.

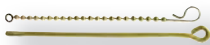
| STOCK# | PACK | CASE | DESCRIPTION | UPC# |
|--------|------|------|---------------|--------------|
| 100899 | 6 | 144 | FLAPPER CHAIN | 054374002474 |



Upper and Lower Lift Wire Set

8-1/2" upper lift wire and 5-1/2" lower lift wire. Fits all standard toilet tanks.

| STOCK# | PACK | CASE | DESCRIPTION | UPC# |
|---------|------|------|-------------|--------------|
| 100903▲ | 12 | 144 | SOLID BRASS | 054374002504 |



Lift Wire with Chain

5-1/2" lower lift wire with beaded chain. Easy to install. Fits all standard toilet tanks.

| STOCK# | PACK | CASE | DESCRIPTION | UPC# |
|---------|------|------|-------------|--------------|
| 100906▲ | 6 | 72 | SOLID BRASS | 054374002535 |

Flush Valves



Plastic Flush Valve

Fits all conventional toilets. Made of non-corrosive plastic. Includes flapper tank ball, chain, locknut & washer.

| STOCK# | PACK | CASE | DESCRIPTION | UPC# |
|---------|------|------|-------------------|--------------|
| 101020▲ | 6 | | VALVE AND FLAPPER | 054374002887 |

Universal 3" Flush Valve Kit

Includes 3" flush valve, tank to bowl gasket and installation hardware.

| STOCK# | PACK | CASE | DESCRIPTION | UPC# |
|---------|------|------|----------------|--------------|
| 103390▲ | 3 | 12 | 3" FLUSH VALVE | 054374318810 |



Dual Flush Converter

Converts your existing toilet to dual flush technology. Wide range of water level adjustment for full and half flush. Includes adjustable fill valve. Uses up to 50% less water.

| STOCK# | PACK | CASE | DESCRIPTION | UPC# |
|---------|------|------|----------------------------------|--------------|
| 103391▲ | 1 | | DUAL FLUSH TOILET CONVERSION KIT | 054374323418 |



American Standard® Tilt Flush Valves and Floats

Seat disk and float for American Standard® toilets.

| STOCK# | PACK | CASE | DESCRIPTION | MFR# | UPC# |
|---------|------|------|---|---------------|--------------|
| 101029▲ | 6 | | #4 FOR CARLYLE AND LEXINGTON-THREAD-ON DISC | | 054374042098 |
| 101030▲ | 6 | | #5 FOR CADET | | 054374042104 |
| 101082▲ | 6 | | #6 FOR LUXOR AND COMPACT-SNAP-ON DISC | | 054374104987 |
| 131082 | 6 | | OEM #6 FOR LUXOR & COMPACT-SNAP-ON DISC | 047107-0070AP | 012611577802 |



American Standard® Champion™ Flush Valve

Complete flush valve for Champion™ toilets

| STOCK# | PACK | CASE | DESCRIPTION | MFR# | UPC# |
|--------|------|------|-----------------------------|-----------------|--------------|
| 131032 | 1 | | OEM COMPLETE VALVE - BOXED | 3174.002-0070AP | 012611577772 |
| 130932 | 6 | 72 | OEM SEAL FOR CHAMPION VALVE | 7301111-0070AP | 012611577765 |



Fluidmaster®

All you need to replace a 3" Toilet Flush Valve for today's high efficiency toilet (HET). Fits Toto, American Standard and other 3" flapper toilets.

| STOCK# | PACK | CASE | DESCRIPTION | MFR# | UPC# |
|---------|------|------|--------------------------|----------|--------------|
| 271556▲ | 6 | | 3" UNIVERSAL FLUSH VALVE | 540AKRP5 | 039961300348 |

Flush Valves and Flush Valve Parts

SECTION 3 • PAGE 12



Flush Valves for Kohler®

Fits Kohler® Rialto™ Waterguard™ toilets.

| STOCK# | PACK | CASE | DESCRIPTION | UPC# |
|---------|------|------|-------------------|--------------|
| 101045▲ | 6 | | VALVE AND FLAPPER | 054374057368 |

Fits Kohler® Wellworth™ Waterguard™ toilets.

| | | | | |
|---------|---|--|-------------------|--------------|
| 101048▲ | 6 | | VALVE AND FLAPPER | 054374057405 |
|---------|---|--|-------------------|--------------|

Fits Kohler® Lite™ 2 piece toilets.

| | | | | |
|---------|---|--|-------------------|--------------|
| 101049▲ | 6 | | VALVE AND FLAPPER | 054374058341 |
|---------|---|--|-------------------|--------------|

Kohler® Flush Valve Repair Kit

Complete kit to replace flush valve. Includes tank to bowl kit. Fits 3947-RZ, 3398-T and 3999-UT toilet tanks.

| STOCK# | PACK | CASE | DESCRIPTION | MFR# | UPC# |
|--------|------|------|-----------------------------------|----------|--------------|
| 131701 | 1 | | OEM 1.28 GPF TANK FLUSH VALVE KIT | K1142714 | 650531939777 |

Mansfield® Flush Valve

Water saver toilet flush valve with spud gasket and spud locknut; anti-siphon.

| STOCK# | PACK | CASE | DESCRIPTION | MFR# | UPC# |
|---------|------|------|--------------------|----------|--------------|
| 100947▲ | 6 | | 1.6 GALLON 11-1/2" | 211-1112 | 054374126170 |

PROFLO® Flush Valve Assembly

3" Flush Valve. Fits PF8212 toilet tank.

| STOCK# | PACK | CASE | DESCRIPTION | MFR# | UPC# |
|---------|------|------|----------------------|------------|--------------|
| 111007▲ | 1 | | FLUSH VALVE ASSEMBLY | PF8212FVPK | 781889237397 |

Flush Valve Parts



American Standard® Tilt Valve Chain

Replacement chain and coupling for all American Standard® tilt type flush valves.

| STOCK# | PACK | CASE | DESCRIPTION | UPC# |
|---------|------|------|----------------|--------------|
| 100898▲ | 6 | 144 | CHAIN ASSEMBLY | 054374042081 |

Mansfield® Flush Valve Repair Seal

Fits #210 and #211 Mansfield® flush valves.

| STOCK# | PACK | CASE | DESCRIPTION | UPC# |
|---------|------|------|-------------|--------------|
| 100945▲ | 6 | 72 | RUBBER | 054374097111 |

Kohler® Flush Valve Repair Seals

Class Five™ & Class Six™ seal for all toilets with canister flush valve.

| STOCK# | PACK | CASE | DESCRIPTION | MFR# | UPC# |
|--------|------|------|-------------|-----------|--------------|
| 130700 | 5 | | OEM SEAL | GP1059291 | 650531662644 |

For various one-piece toilets.

| | | | | | |
|--------|---|--|----------|---------|--------------|
| 130991 | 3 | | OEM SEAL | GP83888 | 650531688439 |
|--------|---|--|----------|---------|--------------|

Seal for dual flush canister toilets with top of tank actuator. ID - 1.25", OD - 2.5" and TH - 0.1".

| | | | | | |
|--------|---|--|--------------------------|-----------|--------------|
| 130818 | 1 | | OEM FLUSH VALVE SEAL KIT | K-1131496 | 650531911308 |
|--------|---|--|--------------------------|-----------|--------------|

Flush Valve Washer

Universal fit for 2" flush valve shank.

| STOCK# | PACK | CASE | DESCRIPTION | UPC# |
|--------|------|------|-------------|--------------|
| 100842 | 6 | 144 | RUBBER | 054374002351 |

Toilet Seat Repair and Toilet Tank & Bowl Repair



New Style Seat Hinge

New style pattern fits all standard toilet seats with 2 piece hinges. Decorative flap conceals bolts. Tightens from the top, making installation and maintenance faster and easier.

| STOCK# | PACK | CASE | DESCRIPTION | UPC# |
|---------|------|---------|-------------|--------------|
| 101031▲ | 12 | PLASTIC | | 054374002962 |



Toilet Seat Hinge Bolt Set

Fits most new style toilet seat hinges.

| STOCK# | PACK | CASE | DESCRIPTION | UPC# |
|---------|------|------|------------------------------|------------------------------|
| 101033▲ | 6 | 144 | FOR OAK SEATS - BRASS PLATED | 1 PAIR PER CARD 054374749850 |
| 101036▲ | 6 | 48 | PLASTIC 1 PAIR PER CARD | 054374002993 |



Toilet Seat Bumpers

Two round & two oblong bumpers with six screws.

| STOCK# | PACK | CASE | DESCRIPTION | UPC# |
|--------|------|------|--------------|-----------------------------|
| 100830 | 6 | 144 | WHITE RUBBER | 1 SET PER CARD 054374002306 |



Toilet Seat Washers

Washers for toilet seat hinges.

| STOCK# | PACK | CASE | DESCRIPTION | UPC# |
|--------|------|------|--------------|-------------------------|
| 100831 | 6 | 144 | WHITE RUBBER | 4 PER CARD 054374002313 |

Toilet Tank & Bowl Repair



Toilet Spanner Flange

Mounts to floor or mends broken toilet ring to stabilize toilet. Heavy duty construction has various mounting holes.

| STOCK# | PACK | CASE | DESCRIPTION | UPC# |
|---------|------|------|---------------------------|--------------|
| 100820▲ | 6 | 36 | PLATED STEEL CONSTRUCTION | 054374091652 |



Oatey Closet Flange Spacer

Builds up an existing closet flange when new flooring is installed. Can be stacked to desired height. Maximum of three.

| STOCK# | PACK | CASE | DESCRIPTION | MFR# | UPC# |
|---------|------|------------|-------------|-------|--------------|
| 274318▲ | 12 | 1/4" THICK | | 43519 | 038753435190 |



Oatey Closet Ring Replacement

Designed to give your toilet back the solid foundation it needs. Comes equipped with 4 offset tabs that extend out beyond the standard mounting hole locations. It provides a wider footprint if the sub-floor has been damaged by a leak directly under the flange.

| STOCK# | PACK | CASE | DESCRIPTION | MFR# | UPC# |
|---------|------|------------|-------------|-------|--------------|
| 274320▲ | 12 | SUPER RING | | 21015 | 017197210150 |

Oatey Toilet Base Plate

Oatey Toilet Base Plate is a stain concealing system which gives a finished look to a new toilet installation. Toilet Base Plates can be used to hide unsightly rings around the toilet base from larger base toilets. The plate is non-corrosive, provides a clean, professional look and easily installs.



| STOCK# | PACK | CASE | DESCRIPTION | MFR# | UPC# |
|--------|------|------|-----------------------|-------|--------------|
| 392270 | 12 | | ROUND NOSE BASE PLATE | 31259 | 038753312590 |

Spud Washers

For closet spud.



| STOCK# | PACK | CASE | DESCRIPTION | UPC# |
|--------|------|------|-------------|--------------|
| 100838 | 6 | 72 | 1-1/4" | 054374226580 |
| 100839 | 6 | 72 | 1-1/2" | 054374091652 |
| 100840 | 6 | 72 | 2" | 054374002337 |

Tank to Bowl Gasket

Fits between toilet tank and bowl. Seals toilet tank to bowl.



| STOCK# | PACK | CASE | DESCRIPTION | UPC# |
|--------|------|------|-------------|--------------|
| 100841 | 6 | 72 | SPONGE TYPE | 054374002344 |

Tank to Bowl Gasket for Crane® Toilets



| STOCK# | PACK | CASE | DESCRIPTION | UPC# |
|--------|------|------|--|--------------|
| 100845 | 1 | 72 | 3-7/16" X 2-7/8" X 1-3/16" SPONGE RUBBER | 054374986170 |

Kohler® Tank to Bowl Gasket

For Cimarron Toilet Tanks. K3496 and K3497 tanks. Seals tank to bowl



| STOCK# | PACK | CASE | DESCRIPTION | MFR# | UPC# |
|--------|------|------|-------------------------|--------------|--------------|
| 130817 | 3 | | OEM TANK TO BOWL GASKET | KGP1018165-F | 885612027900 |

Eljer® Tank to Bowl Washer



| STOCK# | PACK | CASE | DESCRIPTION | UPC# |
|--------|------|------|--------------------|--------------|
| 100946 | 6 | 36 | SEALS TANK TO BOWL | 054374119080 |

Tank to Bowl Washer for Eljer® Toilets



| STOCK# | PACK | CASE | DESCRIPTION | UPC# |
|--------|------|------|---------------------------------------|--------------|
| 100944 | 1 | | 3-1/8" X 2-1/4" X 7/16" SPONGE RUBBER | 054374349371 |

Tank to Bowl Gasket for American Standard & Kohler®

Fits between toilet tank and bowl. Seals toilet tank to bowl.



| STOCK# | PACK | CASE | DESCRIPTION | UPC# |
|--------|------|------|---------------------|--------------|
| 100843 | 6 | 48 | TANK TO BOWL GASKET | 054374002368 |

Tank to Bowl Gaskets for Gerber® Toilets



| STOCK# | PACK | CASE | DESCRIPTION | UPC# |
|--------|------|------|----------------------------|---------------------|
| 100844 | 1 | 72 | 3-1/4" X 2-3/16" X 1-3/16" | 054374298617 |
| 110843 | 1 | 6 | 3-1/4" X 2-3/16" X 1-3/16" | BAGGED 054374872947 |

Kohler® Tank to Bowl Yoke

Tank gasket for all two piece toilets.



| STOCK# | PACK | CASE | DESCRIPTION | MFR# | UPC# |
|--------|------|------|-------------|---------|--------------|
| 130992 | 3 | | OEM GASKET | GP51487 | 650531630704 |

Tank to Bowl Bolt Washers

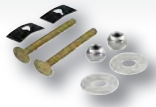
Rubber washers for tank to bowl bolts.



| STOCK# | PACK | CASE | DESCRIPTION | UPC# |
|--------|------|------|-------------|-------------------------|
| 100836 | 6 | 144 | WASHERS | 4 PER CARD 054374002320 |

Brass Toilet Bolts

Solid Brass. Includes Tinnerman nuts, washers and nuts.



| STOCK# | PACK | CASE | DESCRIPTION | UPC# |
|---------|------|------|---------------|-------------------------|
| 100850▲ | 6 | 144 | 1/4" X 2-1/4" | 2 PER CARD 054374002375 |
| 110850▲ | 100 | | 1/4" X 2-1/4" | 2 PER BAG 054374106004 |
| 100851▲ | 6 | 72 | 1/4" X 3-1/2" | 2 PER CARD 054374002382 |
| 110851▲ | 50 | | 1/4" X 3-1/2" | 2 PER BAG 054374106011 |

Brass Toilet Bolt and Screw Sets

Includes solid brass 1/4" x 2-1/4" toilet bolts (2), screws (2), washers (2), and Tinnerman nuts (2), open end nuts (2), closed end nuts (2), to help secure closet flange to toilet bowl.

Designed for four-hole toilet bowls.



| STOCK# | PACK | CASE | DESCRIPTION | UPC# |
|---------|------|------|-------------------------|-----------------------------|
| 100852▲ | 6 | 144 | TOILET BOLTS AND SCREWS | 1 SET PER CARD 054374106004 |
| 110852▲ | 400 | | TOILET BOLTS AND SCREWS | 1 SET PER BAG 054374106608 |

Brass Double Nut Toilet Bolt Sets



| STOCK# | PACK | CASE | DESCRIPTION | UPC# |
|---------|------|------|------------------------------|-------------------------|
| 100855▲ | 6 | 144 | 2-1/4" STAND UP TOILET BOLTS | 2 PER CARD 054374130542 |
| 100856▲ | 6 | 72 | 3-1/2" STAND UP TOILET BOLTS | 2 PER CARD 054374130559 |

Brass Toilet Snap Off Bolts

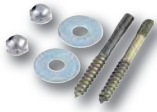
Includes solid brass snap off toilet bolts (2), washers (4), and nuts (2).



| STOCK# | PACK | CASE | DESCRIPTION | UPC# |
|---------|------|------|------------------|--------------|
| 101028▲ | 1 | | 1/4"-20 X 2-1/4" | 054374858514 |

Brass Toilet Screws

Solid Brass Screws. Includes washers and nuts.



| STOCK# | PACK | CASE | DESCRIPTION | UPC# |
|---------|------|------|---------------|-------------------------|
| 100860▲ | 6 | 144 | 1/4" X 2-1/4" | 2 PER CARD 054374002405 |
| 100861▲ | 6 | 72 | 1/4" X 3-1/2" | 2 PER CARD 054374002412 |

Tank to Bowl Bolts

Solid brass bolts, nuts, washers and wing nuts.



| STOCK# | PACK | CASE | DESCRIPTION | UPC# |
|---------|------|------|-------------|-------------------------|
| 100870▲ | 6 | 72 | 5/16" | 2 PER CARD 054374002429 |

Tank to Bowl Washer Kits

Replaces all washers between toilet bowl and tank. Includes wing nuts, solid brass bolts, nuts and washers and sponge gasket.



| STOCK# | PACK | CASE | DESCRIPTION | UPC# |
|---------|------|------|-------------------|--------------|
| 100871▲ | 6 | 48 | BOLTS AND WASHERS | 054374002436 |

Replaces washer and bolts used on American Standard and some Kohler® toilets. Includes wing nuts, solid brass bolts, nuts and washers and a recessed sponge gasket.



| STOCK# | PACK | CASE | DESCRIPTION | UPC# |
|---------|------|------|---------------------------------|---------------------|
| 100873▲ | 6 | 48 | GASKET, BOLTS, NUTS AND WASHERS | 054374105106 |
| 110873▲ | 6 | 48 | GASKET, BOLTS, NUTS AND WASHERS | BAGGED 054374207503 |

Fits Kohler®, American Standard, Mansfield, Gerber and other toilets with a 3 bolt pattern.

Solid brass bolts, nuts, and wing nuts.



| STOCK# | PACK | CASE | DESCRIPTION | UPC# |
|---------|------|------|-------------------------------|--------------|
| 100869▲ | 6 | 72 | 3 BOLT SET FOR KOHLER® | 054374106059 |
| 100874▲ | 6 | 48 | 3 BOLT SET WITH SPONGE GASKET | 054374106066 |



American Standard® Tank to Bowl Washer Kit

Tank bolts for old and new toilets.

| STOCK# | PACK | CASE | DESCRIPTION | MFR# | UPC# |
|--------|------|------|-------------------------------|---------------|-------------|
| 130868 | 6 | | OEM BOLTS, WASHERS AND GASKET | 738756-0070AP | 01261157734 |



Tank to Bowl Washer Kit for Eljer®

| STOCK# | PACK | CASE | DESCRIPTION | MFR# | UPC# |
|---------|------|------|---------------------------------|------|--------------|
| 100876▲ | 1 | | BOLTS, WASHERS, NUTS AND GASKET | | 054374231881 |



Tank to Bowl Washer Kit for Gerber®

| STOCK# | PACK | CASE | DESCRIPTION | MFR# | UPC# |
|---------|------|------|---------------------------------|--------|--------------|
| 110877▲ | 6 | 48 | BOLTS, WASHERS, NUTS AND GASKET | BAGGED | 054374471621 |



Tank to Bowl Yoke Kit for Kohler®

| STOCK# | PACK | CASE | DESCRIPTION | MFR# | UPC# |
|---------|------|------|--|------|--------------|
| 100875▲ | 1 | | GASKET, WASHERS, BOLTS, NUTS AND LOCKNUT | | 054374723188 |



Kohler® Tank to Bowl Washer Kit

Tank bolts for old and new toilets.

| STOCK# | PACK | CASE | DESCRIPTION | MFR# | UPC# |
|--------|------|------|--------------|---------|--------------|
| 130881 | 3 | 90 | OEM BOLT KIT | GP52050 | 650531630599 |



PROFLO® Tank to Bowl Installation Kit

For use with PF1400 and PF9300 series toilets.

| STOCK# | PACK | CASE | DESCRIPTION | MFR# | UPC# |
|---------|------|------|------------------------------------|--------|------|
| 110854▲ | 1 | 1 | GASKET, BOLTS, CAPS & BALLCOCK NUT | PFTGPK | |



Oval Toilet Bolt Caps

White plastic "snap-on" type.

| STOCK# | PACK | CASE | DESCRIPTION | MFR# | UPC# |
|---------|------|------|-------------|------------|--------------|
| 100879▲ | 6 | 72 | WHITE | 2 PER CARD | 054374002450 |



Floor Bolts and Cap Set

| STOCK# | PACK | CASE | DESCRIPTION | MFR# | UPC# |
|---------|------|------|-------------|------|--------------|
| 101024▲ | 1 | | WHITE | | 054374723768 |



Kohler® Round Toilet Bolt Caps

Plastic "snap-on" type.

| STOCK# | PACK | CASE | DESCRIPTION | MFR# | UPC# |
|---------|------|------|----------------------|-------------|--------------|
| 130880 | 3 | 90 | OEM WHITE 2 PER CARD | GP1013092-0 | 650531688422 |
| 100880▲ | 6 | 72 | WHITE 2 PER CARD | | 054374002467 |



Plastic Toilet Shims

Used to eliminate toilet wobble on uneven floors.

| STOCK# | PACK | CASE | DESCRIPTION | MFR# | UPC# |
|---------|------|------|--|----------|--------------|
| 101071▲ | 6 | 72 | RIGID SHIMS - 4 PER CARD | | 054374116799 |
| 140971▲ | 6 | 72 | RIGID SHIMS - 4 PER CARD | PFCSH4 | 781889191453 |
| 110969 | 12 | | RIGID SHIMS - JAR OF 75 | PFCSH75 | 781889227817 |
| 110970 | 12 | | SOFT SHIMS - JAR OF 75 | PFCSS75 | 781889227794 |
| 110971▲ | 300 | | RIGID SHIMS SOLD BY THE EACH - 300 PER JAR | PFCSH300 | 781889192085 |
| 110974▲ | 1 | 6 | NARROW WEDGE - 100 PER BAG | | 054374469093 |

Plastic Toilet Tissue Roller

"Spring-Action" type. Fits most tissue holders.



| STOCK# | PACK | CASE | DESCRIPTION | UPC# |
|---------|------|------|---------------|------------------------|
| 100914▲ | 6 | 72 | WHITE | 054374002580 |
| 110914▲ | 1 | 12 | WHITE | 5 PER BAG 054374083763 |
| 100936▲ | 6 | 72 | CHROME PLATED | 054374010295 |



Urinal Screen and Deodorizer

Large size fits all urinals. Clean fragrance for better odor control. Helps fight clogging of drains.

| STOCK# | PACK | CASE | DESCRIPTION | UPC# |
|--------|------|------|-------------------------------|------------------------|
| 101072 | 6 | | URINAL SCREEN WITH DEODORIZER | 1 PER BAG 054374106103 |

Toilet Bowl Waxes



Bowl Wax Gasket

For setting toilet bowls. Creates tight, long lasting, water and odor proof seal.

| STOCK# | PACK | CASE | DESCRIPTION | UPC# |
|---------|------|------|-------------|--------------|
| 101050▲ | 48 | | GASKET ONLY | 054374000012 |



Bowl Wax Gasket with Plastic Sleeve

Universal bowl ring. Gives true bowl alignment and extends short horn toilet bowls. Seals off seepage of water and gas. Ideal for all floor type bowls. Fits 3" or 4" drain pipes.

| STOCK# | PACK | CASE | DESCRIPTION | UPC# |
|---------|------|------|---|--------------|
| 101051▲ | 24 | | GASKET & FLANGE | 054374000029 |
| 101052▲ | 24 | | URETHANE WAX GASKET & FLANGE | 054374078844 |
| 101053▲ | 24 | | GASKET & FLANGE WITH SOLID BRASS TOILET BOLTS | 054374104888 |



Bowl Wax with Flange

No Seep.

| STOCK# | PACK | CASE | DESCRIPTION | UPC# |
|---------|------|------|-----------------------------|--------------|
| 101054▲ | 24 | | EXTRA THICK WAX WITH FLANGE | 054374113484 |
| 101055▲ | 24 | | 4" WITH FLANGE | 054374118786 |



Bowl Wax Extender Kit

Extra thick with urethane wax gasket for newly laid floors.

| STOCK# | PACK | CASE | DESCRIPTION | UPC# |
|---------|------|------|-------------------|--------------|
| 101056▲ | 24 | | WITH 3-1/2" BOLTS | 054374126385 |

Toilet Bowl Waxes

PROFLO®

PROFLO Urinal Wax Gasket can be used on all wall mounted urinals with 2" waste outlet.



| STOCK# | PACK | CASE | DESCRIPTION | MFR# | UPC# |
|---------|------|------|--|-------------|--------------|
| 101060▲ | 1 | 24 | EXTRA WAX GASKET & FLANGE WITH SOLID BRASS BOLTS | PFWRW/HXWWB | 781889216217 |
| 101061▲ | 1 | 24 | GASKET & FLANGE WITH SOLID BRASS BOLTS | PFWRW/HWB | 781889160299 |
| 101062▲ | 1 | 24 | EXTRA WAX GASKET & FLANGE | PFWRW/HXW | 781889160275 |
| 101063▲ | 1 | 48 | STANDARD WAX RING ONLY | PFWR | 781889160244 |
| 274215▲ | 24 | | URINAL BOWL WAX | PFWRU | 781889160282 |

Wax-Free Toilet Seals

Fluidmaster®

This innovative wax-free toilet seal fits any drain, any toilet, can be repositioned during installation, and excessive plunging won't cause leaks.



| STOCK# | PACK | CASE | DESCRIPTION | MFR# | UPC# |
|---------|------|------|----------------------|------|--------------|
| 271576▲ | 24 | | WAX FREE TOILET SEAL | 7530 | 039961013088 |

Fernco®

Strong and flexible, it sustains a positive seal. Ideal for wall carriers and floor mounts. Accommodates floors raised above the toilet flange by up to 3/4". Maintains a gas tight seal even when minor movement occurs. Fast, easy installation for a long-term solution.



| STOCK# | PACK | CASE | DESCRIPTION | MFR# | UPC# |
|--------|------|------|--------------|--------|--------------|
| 271585 | 20 | | 3" SEAL | FTS3 | 018578006072 |
| 271590 | 20 | | 4" SEAL | FTS4 | 018578006164 |
| 271591 | 20 | | 4" X 3" SEAL | FTS4CF | 018578008670 |

Sloan® Flushometers

oyal® 110 Series Water Closet Valves

Manual Exposed Flushometer for floor mount or wall hung water closets, diaphragm valve, single flush, semi-red brass.



| STOCK# | PACK | CASE | DESCRIPTION | MFR# | UPC# |
|---------|------|------|----------------|---------|--------------|
| 066173▲ | 1 | | 3.5 GPF CHROME | 3010100 | 671254018167 |

Regal® 110-XL Series Water Closet Valves

Manual Exposed Flushometer for floor mount or wall hung water closets, diaphragm valve, single flush, semi-red brass.



| STOCK# | PACK | CASE | DESCRIPTION | MFR# | UPC# |
|---------|------|------|----------------|---------|--------------|
| 066195▲ | 1 | 6 | 3.5 GPF CHROME | 3080153 | 671254123410 |

Royal® 111 Series Water Closet Valves

Manual Exposed Flushometer for floor mount or wall hung water closets, HET, single flush, semi-red brass. Standard diaphragm.



| STOCK# | PACK | CASE | DESCRIPTION | MFR# | UPC# |
|---------|------|------|-----------------|---------|--------------|
| 066170▲ | 1 | | 1.28 GPF CHROME | 3910168 | 671254209794 |



Dual Filtered Bypass Diaphragm.

| STOCK# | PACK | CASE | DESCRIPTION | MFR# | UPC# |
|---------|------|------|--------------------------|---------|--------------|
| 066193▲ | 1 | | 1.28 DFB 1.28 GPF CHROME | 3780018 | 671254356580 |

Regal® 111-XL Series Water Closet Valves

Manual Exposed Flushometer for floor mount or wall hung water closets, low consumption, single flush, semi-red brass.

| STOCK# | PACK | CASE | DESCRIPTION | MFR# | UPC# |
|---------|------|------|----------------|---------|--------------|
| 066194▲ | 6 | 192 | 1.6 GPF CHROME | 3080053 | 671254123403 |

Gem-2® 111-XL Series Closet Valves

Manual Exposed Flushometer for floor mount or wall hung water closets, HET, single flush, semi-red brass.

| STOCK# | PACK | CASE | DESCRIPTION | MFR# | UPC# |
|---------|------|------|-----------------|---------|--------------|
| 066196▲ | 1 | | 1.28 GPF CHROME | 3070026 | 671254393134 |

Uppercut™ WES-111 Series Closet Valves

Exposed Flushometer with dual flush feature, for floor mounted or wall hung top spud bowls.

| STOCK# | PACK | CASE | DESCRIPTION | MFR# | UPC# |
|---------|------|------|-------------------------------|---------|--------------|
| 066160▲ | 1 | 6 | DUAL FLUSH 1.6/1.1 GPF CHROME | 3720000 | 671254315327 |

G2 Optima Plus® 8111 Systems Closet Valves

Sloan OPTIMA SMO equipped Flushometers provide the ultimate in sanitary protection and automatic operation. There is no need for AC hookups or wall alterations. The Flushometer operates by means of a battery powered infrared sensor. Once the user enters the sensor's effective range and then steps away, the Side Mount Unit initiates the flushing cycle to flush the fixture

| STOCK# | PACK | CASE | DESCRIPTION | MFR# | UPC# |
|---------|------|------|-----------------|---------|--------------|
| 066201▲ | 1 | 6 | 1.6 GPF CHROME | 3250400 | 671254266094 |
| 066202▲ | 1 | | 1.28 GPF CHROME | 3250289 | 671254342460 |
| 066204▲ | 1 | 6 | 1.6 GPF CHROME | 3790011 | 671254316683 |

Dual Filtered Bypass Diaphragm

| STOCK# | PACK | CASE | DESCRIPTION | MFR# | UPC# |
|---------|------|------|-----------------|---------|--------------|
| 066203▲ | 1 | | 1.28 GPF CHROME | 3790071 | 671254336377 |

Royal® 186 Series Urinal Valves

Manual Exposed Flushometer for wall hung urinals. Single flush, Side mount, battery-powered. Estimated 3 year battery life. True mechanical override for manual flush.

| STOCK# | PACK | CASE | DESCRIPTION | MFR# | UPC# |
|---------|------|------|------------------|---------|--------------|
| 066168▲ | 1 | 6 | 0.5 GPF CHROME | 3912697 | 671254130579 |
| 066169▲ | 1 | | 0.125 GPF CHROME | 3912633 | 671254345744 |
| 066171▲ | 1 | | 1.0 GPF CHROME | 3012636 | 671254116139 |

Regal® 186-XL Series Urinal Valves

Manual Exposed Flushometer for wall hung urinals.

| STOCK# | PACK | CASE | DESCRIPTION | MFR# | UPC# |
|---------|------|------|----------------|---------|--------------|
| 066188▲ | 1 | 6 | 1.5 GPF CHROME | 3082653 | 671254123496 |
| 066190▲ | 6 | 240 | 1.0 GPF CHROME | 3082675 | 671254123502 |

G2 Optima Plus® 8186-1 Systems Urinal Valves

Exposed, battery powered, sensor operated G2 Optima Plus®. Low consumption.

| STOCK# | PACK | CASE | DESCRIPTION | MFR# | UPC# |
|---------|------|------|----------------|---------|--------------|
| 066251▲ | 1 | | 1.0 GPF CHROME | 3250401 | 671254266100 |

Optima® Systems Retrofit Kits

Battery powered, sensor operated G2 Optima Plus® model retrofit conversion kit for exposed flushometers.

| STOCK# | PACK | CASE | DESCRIPTION | MFR# | UPC# |
|---------|------|------|-----------------------------|---------|--------------|
| 066102▲ | 1 | 6 | TOP MOUNT CLOSET KIT CHROME | 3325400 | 671254267060 |
| 066103▲ | 1 | 6 | TOP MOUNT URINAL KIT CHROME | 3325402 | 671254267084 |

Sloan® Optima systems.

Battery powered, sensor operated retrofit conversion kit for exposed closet and urinal flushometers.

| STOCK# | PACK | CASE | DESCRIPTION | MFR# | UPC# |
|---------|------|------|-------------------------------|---------|--------------|
| 066100▲ | 1 | 6 | EBV89AM SIDE MOUNT KIT CHROME | 0325105 | 671254243934 |

Battery powered, sensor activated, single-flush retrofit conversion kit for exposed closet or urinal flushometers.

| | | | | | |
|---------|---|---|-------------------------------|---------|--------------|
| 066104▲ | 1 | 6 | EBV500A SIDE MOUNT KIT CHROME | 3325500 | 671254400139 |
|---------|---|---|-------------------------------|---------|--------------|

Battery powered, sensor activated retrofit unit for exposed closet and Urinal flushometers.

| | | | | | |
|---------|---|---|----------------------------------|---------|--------------|
| 066101▲ | 1 | 6 | EBV-200-A OVER HANDLE KIT CHROME | 3325201 | 671254316027 |
|---------|---|---|----------------------------------|---------|--------------|



Genuine Sloan® Repair Parts

Diaphragms

Washer set includes: A-15-A Disc for all inside parts kits, A-156-A Diaphragm for all inside parts kits and B-39 Seal.

| STOCK# | PACK | CASE | DESCRIPTION | MFR# | UPC# |
|---------|------|------|-------------------------|----------|--------------|
| 131027▲ | 6 | 48 | WASHER SET | A-156-AA | 054374119462 |
| 131037▲ | 6 | 72 | DIAPHRAGM ONLY | A-156-A | 054374119455 |
| 131068▲ | 6 | 144 | MOLDED DISC ONLY | A-15-A | 054374087297 |
| 111068▲ | 1 | 100 | MOLDED DISC ONLY BAGGED | A-15-A | 054374780020 |

A-56-AA Diaphragm Repair Kit with A-29 - Old Style Pre-1965. Use with brass guide only.

| STOCK# | PACK | CASE | DESCRIPTION | MFR# | UPC# |
|---------|------|------|----------------|---------|--------------|
| 130758 | 6 | 72 | DIAPHRAGM ONLY | A-56-A | 054374128440 |
| 130759▲ | 6 | 72 | REPAIR KIT | A-56-AA | 054374128457 |

Guide Assembly

For closet and urinal valves.

| STOCK# | PACK | CASE | DESCRIPTION | MFR# | UPC# |
|---------|------|------|--------------|---------|--------------|
| 131081▲ | 6 | 72 | GUIDE | A-163-A | 054374128334 |
| 111081▲ | 1 | 100 | GUIDE BAGGED | A-163-A | 054374020928 |

Sloan Flushmate® Cartridge

For Use With 500 501 501A 501B 503 And 504 Series Flushmate System.

Includes: Flush cartridge assemble with actuator set screw and instructions. Bagged.

| STOCK# | PACK | CASE | DESCRIPTION | MFR# | UPC# |
|---------|------|------|---------------------|----------|--------------|
| 130742▲ | 6 | | FLUSHMATE CARTRIDGE | C-100500 | 064871420008 |

Water-Free Replacement Urinal Cartridge

Universal water-free urinal cartridge for use in Sloan and Falcon water-free urinals. Uses no water mechanical-free design patented, sealing locking cartridge. Includes cartridge installation/removal tool (key), protective glove and disposal bag. Easy installation and replacement. Bulk

| STOCK# | PACK | CASE | DESCRIPTION | MFR# | UPC# |
|---------|------|------|----------------------------|---------|--------------|
| 683050▲ | 32 | | WATERFREE URINAL CARTRIDGE | WES-150 | 671254279261 |





Sloan® Handle Assembly

ADA compliant Triple Seal

| STOCK# | PACK | CASE | DESCRIPTION | MFR# | UPC# |
|---------|------|------|-----------------|--------|--------------|
| 130753▲ | 6 | 36 | HANDLE ASSEMBLY | B-73-A | 671254267459 |

Repairs both old and new style Sloan Royal and Regal and Crown flush valves. Chrome plated brass

| | | | | | |
|---------|---|----|-----------------|--------|--------------|
| 131057▲ | 6 | 72 | HANDLE ASSEMBLY | B-32-A | 054374119639 |
|---------|---|----|-----------------|--------|--------------|



Sloan® Handle Repair Kit

| STOCK# | PACK | CASE | DESCRIPTION | MFR# | UPC# |
|---------|------|------|-------------------|--------|--------------|
| 131026▲ | 6 | 144 | HANDLE REPAIR KIT | B-50-A | 054374119615 |



Sloan® Vacuum Breakers

Replaces Royal urinal vacuum breaker. Contains: V-552 baffle, V-551 sleeve, tail piece, V-553-A chrome plated coupling.

| STOCK# | PACK | CASE | DESCRIPTION | MFR# | UPC# |
|---------|------|------|-------------|----------|--------------|
| 131069▲ | 6 | | 3/4" X 9" | V-500-AA | 054374119530 |
| 131070▲ | 6 | | 1-1/4" X 9" | V-500-AA | 054374119547 |
| 131071▲ | 6 | | 1-1/2" X 9" | V-500-AA | 054374119554 |



Sloan® Vacuum Breaker Repair Kits

Ideal for high back pressures associated with low-consumption fixtures.

| STOCK# | PACK | CASE | DESCRIPTION | MFR# | UPC# |
|--------|------|------|-------------|------|------|
|--------|------|------|-------------|------|------|

For Regal valves

| | | | | | |
|---------|---|----|---------------------------|---------|--------------|
| 130762▲ | 6 | 48 | VACUUM BREAKER REPAIR KIT | V-651-A | 671254130715 |
|---------|---|----|---------------------------|---------|--------------|

For Royal flush valves

| | | | | | |
|---------|---|----|---------------------------|---------|--------------|
| 131028▲ | 6 | 48 | VACUUM BREAKER REPAIR KIT | V-551-A | 054374119622 |
|---------|---|----|---------------------------|---------|--------------|



Sloan® Relief Valves

| STOCK# | PACK | CASE | DESCRIPTION | MFR# | UPC# |
|---------|------|------|-----------------------------|---------|--------------|
| 131058▲ | 6 | 72 | CLOSET VALVE - WHITE | A-19-AC | 054374119653 |
| 111058▲ | 1 | 100 | CLOSET VALVE - WHITE BAGGED | A-19-AC | 054374286447 |
| 131059▲ | 6 | 72 | URINAL VALVE - BLACK | A-19-AU | 054374119646 |

Sloan® Control Stop Repair Kits

Wheel Handle Repair Kit for H-730-A Control Stop

| STOCK# | PACK | CASE | DESCRIPTION | MFR# | UPC# |
|---------|------|------|-------------|-----------|--------------|
| 131066▲ | 6 | 72 | 1" | H-541-A | 054374119660 |
| 111066▲ | 1 | 100 | 1" BAGGED | H-541-ASD | 054374092864 |
| 131067▲ | 6 | 72 | 3/4" | H-543-A | 054374119677 |
| 111067▲ | 1 | 100 | 3/4" BAGGED | H543-ASD | 054374209286 |



Sloan® Stop Cap Kit Vandal Resistant

Replaces old style fixed stop covers. Cover rotates preventing theft. Fits all stops.

| STOCK# | PACK | CASE | DESCRIPTION | MFR# | UPC# |
|---------|------|------|-------------|----------|--------------|
| 130756▲ | 10 | | 3/4" | H-1009-A | 671254121041 |
| 130757▲ | 10 | | 1" | H-1010-A | 671254145719 |



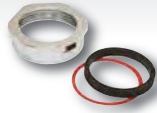
Sloan® Spud Coupling Assembly

Royal spud coupling assembly. Polished chrome.

| STOCK# | PACK | CASE | DESCRIPTION | MFR# | UPC# |
|---------|------|------|-------------|-------|--------------|
| 130760▲ | 6 | 48 | 1-1/2" | F-5-A | 054374128310 |
| 130761▲ | 6 | 72 | 3/4" | F-5-A | 054374128327 |



Sloan® Spud Coupling Nut & Washers



| STOCK# | PACK | CASE | DESCRIPTION | MFR# | UPC# |
|---------|------|--------|-------------|--------|--------------|
| 130763▲ | 1 | 3/4" | CHROME | F-20-A | 671254008878 |
| 130764▲ | 1 | 1" | CHROME | F-20-A | 671254008908 |
| 130765▲ | 1 | 1-1/4" | CHROME | F-20-A | 671254008885 |
| 130766▲ | 1 | 1-1/2" | CHROME | F-20-A | 671254008892 |

Sloan® Adjustable Tailpiece



| STOCK# | PACK | CASE | DESCRIPTION | MFR# | UPC# |
|---------|------|---------|-------------|---------|--------------|
| 130754▲ | 6 | 48 | 2-1/16" | H-551-A | 054374128297 |
| 130755▲ | 6 | 48 | 3-1/16" | H-551-A | 054374128303 |
| 130750▲ | 12 | 4-1/16" | | H-551-A | 054374140886 |
| 130751▲ | 12 | 5-1/16" | | H-551-A | 054374140893 |
| 130752▲ | 12 | 6-1/16" | | H-551-A | 054374140121 |

Sloan® O-Rings



| STOCK# | PACK | CASE | DESCRIPTION | MFR# | UPC# |
|---------|------|------|----------------------|-------|--------------|
| 131073▲ | 6 | 144 | O-RINGS - 2 PER CARD | H-553 | 054374119684 |
| 111073▲ | 1 | 50 | O-RING - 1 PER BAG | H-553 | 054374003099 |
| 141073▲ | 24 | 288 | O-RING - 24 PER CARD | H-553 | 781889074541 |

Sloan® Inside Valve Cover



Inside cover, plastic, for use with Royal and Regal flush valves.

| STOCK# | PACK | CASE | DESCRIPTION | MFR# | UPC# |
|---------|------|------|--------------|------|--------------|
| 131079▲ | 6 | 72 | INSIDE COVER | A-71 | 054374119431 |

Sloan® Complete Rebuild Kits

Kit includes inside repair kit, handle repair kit, vacuum breaker repair kit & o-ring.



| STOCK# | PACK | CASE | DESCRIPTION | MFR# | UPC# |
|---------|------|----------------|-------------|-----------------|--------------|
| 131084▲ | 5 | 3.5 GPF TOILET | | R-1003-A CARDED | 054374120468 |
| 111084▲ | 6 | 3.5 GPF TOILET | | R-1003-A BOXED | 671254132443 |
| 131085▲ | 5 | 1.6 GPF TOILET | | R-1004-A CARDED | 054374120475 |
| 111085▲ | 5 | 1.6 GPF TOILET | | R-1004-A BOXED | 671254132450 |
| 111083▲ | 6 | 1.5 GPF URINAL | | R-1002-A BOXED | 671254132436 |
| 131086▲ | 5 | 1.0 GPF URINAL | | R-1005-A CARDED | 054374120482 |
| 111086▲ | 5 | 1.0 GPF URINAL | | R-1005-A BOXED | 671254132467 |

Royal® Performance Kits

Includes: Dual Filtered, Diaphragm, Triple Seal Handle Kit, High Back Pressure, Vacuum Breaker Kit & Tail Piece O-Ring. Used to repair Royal collection flush valves. Boxed.



| STOCK# | PACK | CASE | DESCRIPTION | MFR# | UPC# |
|---------|------|------------------|------------------|-------------|--------------|
| 111050▲ | 1 | 1.6 GPF - CLOSET | | A-1101-A-BX | 671254258068 |
| 111040▲ | 10 | 1.6 GPF - CLOSET | | A-1101-A | 671254146907 |
| 111041▲ | 10 | 3.5 GPF - CLOSET | | A-1102-A | 671254146914 |
| 111043▲ | 1 | 50 | 0.5 GPF - URINAL | A-1106-A-BX | 671254146938 |
| 111044▲ | 10 | 1.0 GPF - URINAL | | A-1107-A | 671254146945 |
| 111054▲ | 1 | 50 | 1.0 GPF - URINAL | A-1107-A-BX | 671254258105 |
| 111045▲ | 1 | 50 | 1.5 GPF - URINAL | A-1108-A-BX | 671254146952 |

Genuine Sloan® Repair Parts & Zurn® Flushometers

TOILET REPAIR

SECTION 3 • PAGE 23

Sloan® Unfiltered Diaphragm Repair Kits

Unfiltered diaphragm repair kit for most older Regal, Royal and Royal II valves.



| STOCK# | PACK | CASE | DESCRIPTION | MFR# | UPC# |
|---------|------|------|----------------|---------------|--------------|
| 131060▲ | 6 | | 3.5 GPF TOILET | A-38-A CARDED | 054374119400 |
| 111060▲ | 50 | | 3.5 GPF TOILET | A-38-A BOXED | 671254039445 |
| 131063▲ | 6 | | 1.6 GPF TOILET | A-41-A CARDED | 054374119417 |
| 111063▲ | 12 | | 1.6 GPF TOILET | A-41-A BOXED | 671254039476 |
| 131065▲ | 6 | | 4.5 GPF TOILET | A-36-A CARDED | 054374119387 |
| 111065▲ | 50 | | 4.5 GPF TOILET | A-36-A BOXED | 671254039421 |
| 131061▲ | 6 | | 1.5 GPF URINAL | A-37-A CARDED | 054374119394 |
| 111061▲ | 50 | | 1.5 GPF URINAL | A-37-A BOXED | 671254039438 |
| 131064▲ | 6 | | 1.0 GPF URINAL | A-42-A CARDED | 054374119424 |
| 111064▲ | 50 | | 1.0 GPF URINAL | A-42-A BOXED | 671254045705 |

Royal® Dual Filtered Diaphragm Kits

Made out of durable material and is chloramine resistant. Used to repair Royal collection flush valves. Boxed



| STOCK# | PACK | CASE | DESCRIPTION | MFR# | UPC# |
|---------|------|------|------------------|-------------|--------------|
| 111022 | 50 | | 1.6 GPF - CLOSET | A-1041-A | 671254258020 |
| 111021▲ | 1 | 50 | 3.5 GPF - CLOSET | A-1038-A-BX | 671254258013 |
| 111024▲ | 1 | 50 | 1.28 GPF -CLOSET | A-1045-A-BX | 671254224605 |
| 111062▲ | 50 | | 0.5 GPF - URINAL | A-43-A | 671254130609 |
| 111020▲ | 1 | 50 | 1.5 GPF - URINAL | A-1037-A-BX | 671254257504 |
| 111023▲ | 1 | 50 | 1.0 GPF - URINAL | A-1042-A-BX | 671254258037 |

Sloan® Valve Wrench

An ergonomic tool that offers good leverage and fast adjustments to Flushometers.



| STOCK# | PACK | CASE | DESCRIPTION | MFR# | UPC# |
|---------|------|------|-------------|---------|--------------|
| 131099▲ | 1 | | A-50 WRENCH | 0301255 | 671254001053 |

Zurn® Flushometers

Aquaflush® Flushometer Water Closet Valves



| STOCK# | PACK | CASE | DESCRIPTION | MFR# | UPC# |
|---------|------|------|----------------|--------------|--------------|
| 066305▲ | 1 | 6 | 1.6 GPF CHROME | Z6000WS1YBYC | 670240410602 |

Aquaflush® Flushometer Urinal Valves



| STOCK# | PACK | CASE | DESCRIPTION | MFR# | UPC# |
|---------|------|------|----------------|--------------|--------------|
| 066304▲ | 1 | 6 | 1.0 GPF CHROME | Z6003WS1YBYC | 670240410688 |

E-Z Flush® Automatic Retrofit Kit

Retrofits to existing flush valves to make them automatic flush.



| STOCK# | PACK | CASE | DESCRIPTION | MFR# | UPC# |
|---------|------|------|-------------|---------|--------------|
| 110501▲ | 1 | | CHROME | ZZERKCP | 670240569881 |

SECTION 3 • PAGE 24



Vacuum Breaker Assemblies

Replaces vacuum breaker tubes. Includes vacuum breaker and coupling nut. Chrome Plated

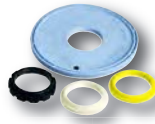
| STOCK# | PACK | CASE | DESCRIPTION | MFR# | UPC# |
|---------|------|------|-------------|---------------|--------------|
| 130530▲ | 6 | | 3/4" x 9" | P6003-4-AA-CP | 670240412842 |
| 130531▲ | 6 | | 1-1/4" x 9" | R6001-A-AA-CP | 670240576544 |
| 130532▲ | 6 | | 1-1/2" x 9" | R6000-A-AA-CP | 670240414198 |



Molded Disk

Fits all flush valves.

| STOCK# | PACK | CASE | DESCRIPTION | MFR# | UPC# |
|---------|------|------|-------------|-----------|--------------|
| 130536▲ | 6 | 144 | MOLDED DISC | P6000-E14 | 670240576339 |



Diaphragm Replacement Kit

Includes 1 each, diaphragm, 3.5 GPF flow ring, 1.6 GPF flow ring and 1.0 GPF low ring.

| STOCK# | PACK | CASE | DESCRIPTION | MFR# | UPC# |
|--------|------|------|---------------|------------|--------------|
| 130537 | 6 | 72 | DIAPHRAGM KIT | P6000-ER15 | 670240552128 |



O-Rings

Fits all tailpieces.

| STOCK# | PACK | CASE | DESCRIPTION | MFR# | UPC# |
|--------|------|------|----------------------|-----------|--------------|
| 130538 | 6 | 144 | O-RINGS - 6 PER CARD | P6000-C31 | 670240414020 |



Vacuum Breaker Repair Kit

Repairs all vacuum breakers.

| STOCK# | PACK | CASE | DESCRIPTION | MFR# | UPC# |
|--------|------|------|---------------|------------|--------------|
| 130539 | 6 | 48 | VB REPAIR KIT | P6000-B-HP | 670240380097 |



Guide Assembly

Fits all flush valves and repair kits.

| STOCK# | PACK | CASE | DESCRIPTION | MFR# | UPC# |
|---------|------|------|-------------|-----------|--------------|
| 130540▲ | 6 | 72 | GUIDE | P-6000-EG | 670240576421 |



Trip Valves

| STOCK# | PACK | CASE | DESCRIPTION | MFR# | UPC# |
|---------|------|------|---------------------|------------|--------------|
| 130542▲ | 6 | 72 | BLACK - FOR URINALS | P6000-EU13 | 670240576476 |
| 130543▲ | 6 | 72 | WHITE - FOR CLOSETS | P6000-EC13 | 670240576391 |



Stop Repair Kit

Repairs stop valves.

| STOCK# | PACK | CASE | DESCRIPTION | MFR# | UPC# |
|---------|------|------|--------------|------------|--------------|
| 130544▲ | 6 | 72 | FOR 1" STOPS | P6000-D-SD | 670240576322 |



Handle Assembly-ADA Compliant

Fits all Flush valves.

| STOCK# | PACK | CASE | DESCRIPTION | MFR# | UPC# |
|---------|------|------|---------------|-------------|--------------|
| 130553▲ | 12 | | CHROME PLATED | P6000-M-ADA | 670240001305 |



Handle Repair Kit

Repairs all flush valve handles.

| STOCK# | PACK | CASE | DESCRIPTION | MFR# | UPC# |
|---------|------|------|-----------------|----------|--------------|
| 130546▲ | 6 | 72 | FOR ALL HANDLES | P6000-MK | 670240576520 |

Genuine Zurn® Flush Valve Parts

TOILET REPAIR

SECTION 3 • PAGE 25



Inside Cover

Seals top of valve assembly.

| STOCK# | PACK | CASE | DESCRIPTION | MFR# | UPC# |
|--------|------|------|--------------|---------|--------------|
| 130547 | 6 | 72 | BLUE PLASTIC | P6000-L | 670240576483 |



Spud Coupling Assemblies

Attaches VB tubes to fixture. Includes spud, gaskets and flange.

| STOCK# | PACK | CASE | DESCRIPTION | MFR# | UPC# |
|---------|------|------|----------------------|---------|--------------|
| 130548▲ | 6 | 72 | 3/4" CHROME PLATED | P6003-H | 670240412651 |
| 130549▲ | 6 | 48 | 1-1/2" CHROME PLATED | P6000-H | 670240413658 |



Tailpiece

Adjusts to specified rough-in.

| STOCK# | PACK | CASE | DESCRIPTION | MFR# | UPC# |
|---------|------|------|--------------------------------------|----------|--------------|
| 130550▲ | 6 | 48 | 2-3/4" FOR 5" TO 5-3/4" ROUGH-IN | P6000-J2 | 670240413511 |
| 130552▲ | 12 | | 3-3/8" FOR 5-1/2" TO 6-1/4" ROUGH-IN | P6000-J3 | 670240413450 |



Vandal Resistant Stop Cover

Replaces old style fixed stop covers. Cover rotates preventing theft. Fits all stops.

| STOCK# | PACK | CASE | DESCRIPTION | MFR# | UPC# |
|---------|------|------|------------------|----------|--------------|
| 130551▲ | 6 | 72 | FITS 3/4" AND 1" | P6000-VC | 670240413191 |

Flush Valve Repair Kits - Boxed

Retro fit Kit, Provides automatic flushing for urinal and water closet flush valves. Replaces current handle. Battery operated.



| STOCK# | PACK | CASE | DESCRIPTION | MFR# | UPC# |
|---------|------|------|-----------------------|----------|--------------|
| 110500▲ | 6 | | CHROME PLATED HOUSING | ZERK-CPM | 670240569898 |



Aquaflush Closet Diaphragm Repair Kits. Chemical and clog resistant diaphragms.

| STOCK# | PACK | CASE | DESCRIPTION | MFR# | UPC# |
|---------|------|------|-----------------------------|---------------|--------------|
| 110510▲ | 60 | | DIAPHRAGM ASSEMBLY 1.28 GPF | P6000-ECA-HET | 670240364400 |



AquaVantage Closet Repair Kits

| STOCK# | PACK | CASE | DESCRIPTION | MFR# | UPC# |
|---------|------|------|----------------------------|---------------|--------------|
| 110511▲ | 50 | | DIAPHRAGM ASSEMBLY 1.6 GPF | P6000-ECA-WS1 | 670240507825 |
| 110512▲ | 60 | | DIAPHRAGM ASSEMBLY 3.5 GPF | P6000-ECA-WS | 670240507999 |



Aquaflush Closet Repair Kits. Chemical and clog resistant diaphragms.

| STOCK# | PACK | CASE | DESCRIPTION | MFR# | UPC# |
|---------|------|------|----------------------------|---------------|--------------|
| 110520▲ | 50 | | DIAPHRAGM ASSEMBLY 1.6 GPF | P6000-ECR-WS1 | 670240552098 |
| 110521▲ | 50 | | DIAPHRAGM ASSEMBLY 3.5 GPF | P6000-ECR-WS | 670240552081 |
| 110522▲ | 50 | | DIAPHRAGM ASSEMBLY 4.5 GPF | P6000-ECR-FF | 670240552135 |



AquaVantage Closet Repair Kits. Includes diaphragm assembly, vacuum breaker repair kit and handle repair kit.

| STOCK# | PACK | CASE | DESCRIPTION | MFR# | UPC# |
|---------|------|------|--------------------------|------------------|--------------|
| 110530▲ | 50 | | COMPLETE KIT FOR 1.6 GPF | P6000-ECA-WS1-RK | 670240531390 |
| 110531▲ | 50 | | COMPLETE KIT FOR 3.5 GPF | P6000-ECA-WS-RK | 670240533097 |



Aquaflush Closet Repair Kits. Includes chemical and clog resistant diaphragm assembly, vacuum breaker repair kit and handle repair kit.

| STOCK# | PACK | CASE | DESCRIPTION | MFR# | UPC# |
|---------|------|------|--------------------------|------------------|--------------|
| 110540▲ | 50 | | COMPLETE KIT FOR 1.6 GPF | P6000-ECR-WS1-RK | 670240553880 |
| 110541▲ | 50 | | COMPLETE KIT FOR 3.5 GPF | P6000-ECR-WS-RK | 670240554320 |

Genuine Zurn® Flush Valve Parts

Flush Valve Repair Kits (Continued)



AquaVantage Urinal Diaphragm Repair Kits.

| STOCK# | PACK | CASE | DESCRIPTION | MFR# | UPC# |
|---------|------|------|----------------------------|---------------|--------------|
| 110513▲ | 50 | | DIAPHRAGM ASSEMBLY 1.0 GPF | P6000-EUA-WS1 | 670240507876 |
| 110514▲ | 50 | | DIAPHRAGM ASSEMBLY 1.5 GPF | P6000-EUA-WS | 670240522169 |



Aquaflush Urinal Diaphragm Repair Kits. Chemical and clog resistant.

| STOCK# | PACK | CASE | DESCRIPTION | MFR# | UPC# |
|---------|------|------|----------------------------|---------------|--------------|
| 110523▲ | 50 | | DIAPHRAGM ASSEMBLY 1. GPF | P6000-EUR-WS1 | 670240552111 |
| 110524▲ | 50 | | DIAPHRAGM ASSEMBLY 1.6 GPF | P6000-EUR-WS | 670240552104 |



AquaVantage Urinal Repair Kits. Includes diaphragm assembly, vacuum breaker repair kit and handle repair kit.

| STOCK# | PACK | CASE | DESCRIPTION | MFR# | UPC# |
|---------|------|------|--------------------------|------------------|--------------|
| 110532▲ | 50 | | COMPLETE KIT FOR 1.0 GPF | P6000-EUA-WS1-RK | 670240533110 |
| 110533▲ | 50 | | COMPLETE KIT FOR 1.5 GPF | P6000-EUA-WS-RK | 670240533103 |



Aquaflush Urinal Repair Kits. Includes chemical and clog resistant diaphragm assembly, vacuum breaker repair kit and handle repair kit.

| STOCK# | PACK | CASE | DESCRIPTION | MFR# | UPC# |
|---------|------|------|--------------------------|------------------|--------------|
| 110542▲ | 50 | | COMPLETE KIT FOR 1.0 GPF | P6000-EUR-WS1-RK | 670240552623 |

Proposition 65 Warnings

Below is a listing of all items that come with a Proposition 65 Warning. All eligible items are in numerical order.

| STOCK# | WARNING | CHEMICAL |
|--------|---|---|
| 066100 | <!> WARNING: Cancer and Reproductive Harm - www.p65warnings.ca.gov | LEAD |
| 066101 | <!> WARNING: Cancer and Reproductive Harm - www.p65warnings.ca.gov | LEAD |
| 066102 | <!> WARNING: Cancer and Reproductive Harm - www.p65warnings.ca.gov | LEAD |
| 066103 | <!> WARNING: Cancer and Reproductive Harm - www.p65warnings.ca.gov | LEAD |
| 066104 | <!> WARNING: Cancer and Reproductive Harm - www.p65warnings.ca.gov | LEAD |
| 066160 | <!> WARNING: Cancer and Reproductive Harm - www.p65warnings.ca.gov | LEAD |
| 066168 | <!> WARNING: Cancer and Reproductive Harm - www.p65warnings.ca.gov | LEAD |
| 066169 | <!> WARNING: Cancer and Reproductive Harm - www.p65warnings.ca.gov | LEAD |
| 066170 | <!> WARNING: Cancer and Reproductive Harm - www.p65warnings.ca.gov | LEAD |
| 066171 | <!> WARNING: Cancer and Reproductive Harm - www.p65warnings.ca.gov | LEAD |
| 066188 | <!> WARNING: Cancer and Reproductive Harm - www.p65warnings.ca.gov | LEAD |
| 066190 | <!> WARNING: Cancer and Reproductive Harm - www.p65warnings.ca.gov | LEAD |
| 066193 | <!> WARNING: Cancer and Reproductive Harm - www.p65warnings.ca.gov | LEAD |
| 066194 | <!> WARNING: Cancer and Reproductive Harm - www.p65warnings.ca.gov | LEAD |
| 066196 | <!> WARNING: Cancer and Reproductive Harm - www.p65warnings.ca.gov | LEAD |
| 066201 | <!> WARNING: Cancer and Reproductive Harm - www.p65warnings.ca.gov | LEAD |
| 066202 | <!> WARNING: Cancer and Reproductive Harm - www.p65warnings.ca.gov | LEAD |
| 066203 | <!> WARNING: Cancer and Reproductive Harm - www.p65warnings.ca.gov | LEAD |
| 066204 | <!> WARNING: Cancer and Reproductive Harm - www.p65warnings.ca.gov | LEAD |
| 066251 | <!> WARNING: Cancer and Reproductive Harm - www.p65warnings.ca.gov | LEAD |
| 066304 | <!> WARNING: Cancer and Reproductive Harm - www.p65warnings.ca.gov | LEAD |
| 066305 | <!> WARNING: Cancer and Reproductive Harm - www.p65warnings.ca.gov | LEAD |
| 100807 | <!> WARNING: Cancer and Reproductive Harm - www.p65warnings.ca.gov | CHROMIUM (HEXAVALENT COMPOUNDS); LEAD AND LEAD COMPOUNDS; NICKEL (METALLIC) |
| 100808 | <!> WARNING: Cancer and Reproductive Harm - www.p65warnings.ca.gov | ACRYLAMIDE; LEAD AND LEAD COMPOUNDS; NICKEL (METALLIC) |
| 100809 | <!> WARNING: Cancer and Reproductive Harm - www.p65warnings.ca.gov | CHROMIUM (HEXAVALENT COMPOUNDS); LEAD AND LEAD COMPOUNDS; NICKEL (METALLIC) |
| 100810 | <!> WARNING: Cancer and Reproductive Harm - www.p65warnings.ca.gov | ACRYLAMIDE; LEAD AND LEAD COMPOUNDS; NICKEL (METALLIC) |

Proposition 65 Warnings

Below is a listing of all items that come with a Proposition 65 Warning. All eligible items are in numerical order.

| STOCK# | WARNING | CHEMICAL |
|--------|---|--|
| 100811 | <I> WARNING: Cancer and Reproductive Harm - www.p65warnings.ca.gov | ACRYLAMIDE; LEAD AND LEAD COMPOUNDS; NICKEL (METALLIC) |
| 100812 | <I> WARNING: Cancer and Reproductive Harm - www.p65warnings.ca.gov | ACRYLAMIDE; LEAD AND LEAD COMPOUNDS; NICKEL (METALLIC) |
| 100815 | <I> WARNING: Cancer and Reproductive Harm - www.p65warnings.ca.gov | DI (2-ETHYLHEXYL) PHTHALATE (DEHP); LEAD AND LEAD COMPOUNDS; STYRENE |
| 100820 | <I> WARNING: Cancer and Reproductive Harm - www.p65warnings.ca.gov | LEAD AND LEAD COMPOUNDS; NICKEL (METALLIC); STYRENE |
| 100850 | <I> WARNING: Cancer and Reproductive Harm - www.p65warnings.ca.gov | |
| 100851 | <I> WARNING: Cancer and Reproductive Harm - www.p65warnings.ca.gov | |
| 100852 | <I> WARNING: Cancer and Reproductive Harm - www.p65warnings.ca.gov | |
| 100855 | <I> WARNING: Cancer and Reproductive Harm - www.p65warnings.ca.gov | |
| 100856 | <I> WARNING: Cancer and Reproductive Harm - www.p65warnings.ca.gov | |
| 100860 | <I> WARNING: Cancer and Reproductive Harm - www.p65warnings.ca.gov | LEAD |
| 100861 | <I> WARNING: Cancer and Reproductive Harm - www.p65warnings.ca.gov | LEAD |
| 100869 | <I> WARNING: Cancer and Reproductive Harm - www.p65warnings.ca.gov | LEAD |
| 100870 | <I> WARNING: Cancer and Reproductive Harm - www.p65warnings.ca.gov | LEAD AND LEAD COMPOUNDS; 1,3-BUTADIENE |
| 100871 | <I> WARNING: Cancer and Reproductive Harm - www.p65warnings.ca.gov | LEAD AND LEAD COMPOUNDS; 1,3-BUTADIENE |
| 100873 | <I> WARNING: Cancer and Reproductive Harm - www.p65warnings.ca.gov | LEAD AND LEAD COMPOUNDS; 1,3-BUTADIENE |
| 100874 | <I> WARNING: Cancer and Reproductive Harm - www.p65warnings.ca.gov | LEAD |
| 100875 | <I> WARNING: Cancer and Reproductive Harm - www.p65warnings.ca.gov | LEAD AND LEAD COMPOUNDS |
| 100876 | <I> WARNING: Cancer and Reproductive Harm - www.p65warnings.ca.gov | LEAD AND LEAD COMPOUNDS |
| 100879 | <I> WARNING: Cancer and Reproductive Harm - www.p65warnings.ca.gov | DI (2-ETHYLHEXYL) PHTHALATE (DEHP) |
| 100880 | <I> WARNING: Cancer and Reproductive Harm - www.p65warnings.ca.gov | DI (2-ETHYLHEXYL) PHTHALATE (DEHP) |

SECTION 3 • PAGE 28

Proposition 65 Warnings

Below is a listing of all items that come with a Proposition 65 Warning. All eligible items are in numerical order.

| STOCK# | WARNING | CHEMICAL |
|--------|---|--|
| 100903 | <!> WARNING: Cancer and Reproductive Harm - www.p65warnings.ca.gov | LEAD |
| 100906 | <!> WARNING: Cancer and Reproductive Harm - www.p65warnings.ca.gov | LEAD |
| 100907 | <!> WARNING: Cancer and Reproductive Harm - www.p65warnings.ca.gov | LEAD |
| 100908 | <!> WARNING: Cancer and Reproductive Harm - www.p65warnings.ca.gov | LEAD |
| 100909 | <!> WARNING: Cancer and Reproductive Harm - www.p65warnings.ca.gov | LEAD |
| 100910 | <!> WARNING: Cancer and Reproductive Harm - www.p65warnings.ca.gov | LEAD |
| 100911 | <!> WARNING: Cancer and Reproductive Harm - www.p65warnings.ca.gov | 1,3-BUTADIENE; CHROMIUM (HEXAVALENT COMPOUNDS); LEAD AND LEAD COMPOUNDS NICKEL (METALLIC);STYRENE |
| 100913 | <!> WARNING: Cancer and Reproductive Harm - www.p65warnings.ca.gov | CHROMIUM (HEXAVALENT COMPOUNDS); LEAD AND LEAD COMPOUNDS; NICKEL (METALLIC); STYRENE |
| 100914 | <!> WARNING: Cancer and Reproductive Harm - www.p65warnings.ca.gov | 1,3-BUTADIENE; NICKEL (METALLIC); STYRENE |
| 100915 | <!> WARNING: Cancer and Reproductive Harm - www.p65warnings.ca.gov | 1,3-BUTADIENE; CHROMIUM (HEXAVALENT COMPOUNDS); LEAD AND LEAD COMPOUNDS; NICKEL (METALLIC);STYRENE |
| 100917 | <!> WARNING: Cancer and Reproductive Harm - www.p65warnings.ca.gov | CHROMIUM (HEXAVALENT COMPOUNDS); LEAD AND LEAD COMPOUNDS; NICKEL (METALLIC) |
| 100919 | <!> WARNING: Cancer and Reproductive Harm - www.p65warnings.ca.gov | CHROMIUM (HEXAVALENT COMPOUNDS); LEAD AND LEAD COMPOUNDS; NICKEL (METALLIC) |
| 100920 | <!> WARNING: Cancer and Reproductive Harm - www.p65warnings.ca.gov | CHROMIUM (HEXAVALENT COMPOUNDS); LEAD AND LEAD COMPOUNDS; NICKEL (METALLIC);STYRENE |
| 100922 | <!> WARNING: Cancer and Reproductive Harm - www.p65warnings.ca.gov | 1,3-BUTADIENE; CHROMIUM (HEXAVALENT COMPOUNDS); STYRENE |
| 100923 | <!> WARNING: Cancer and Reproductive Harm - www.p65warnings.ca.gov | 1,3-BUTADIENE; CHROMIUM (HEXAVALENT COMPOUNDS); LEAD AND LEAD COMPOUNDS; NICKEL (METALLIC) |
| 100924 | <!> WARNING: Cancer and Reproductive Harm - www.p65warnings.ca.gov | 1,3-BUTADIENE; CHROMIUM (HEXAVALENT COMPOUNDS); STYRENE |

Proposition 65 Warnings

Below is a listing of all items that come with a Proposition 65 Warning. All eligible items are in numerical order.

SECTION 3 • PAGE 30

| STOCK# | WARNING | CHEMICAL | | |
|--------|---|---|----------|----------|
| 100925 | <I> WARNING: Cancer and Reproductive Harm - www.p65warnings.ca.gov | CHROMIUM (HEXAVALENT COMPOUNDS); DI (2-ETHYLHEXYL) PHTHALATE (DEHP); LEAD AND LEAD COMPOUNDS; NICKEL (METALLIC) | | |
| 100926 | <I> WARNING: Cancer and Reproductive Harm - www.p65warnings.ca.gov | 1,3-BUTADIENE; STYRENE | | |
| 100927 | <I> WARNING: Cancer and Reproductive Harm - www.p65warnings.ca.gov | CHROMIUM (HEXAVALENT COMPOUNDS); LEAD AND LEAD COMPOUNDS; NICKEL (METALLIC) | | |
| 100936 | <I> WARNING: Cancer and Reproductive Harm - www.p65warnings.ca.gov | 1,3-BUTADIENE; CHROMIUM (HEXAVALENT COMPOUNDS); STYRENE | | |
| 100947 | <I> WARNING: Cancer and Reproductive Harm - www.p65warnings.ca.gov | TITANIUM DIOXIDE; CARBON BLACK | | |
| 100948 | <I> WARNING: Reproductive Harm - www.p65warnings.ca.gov | BUTYL BENZYL PHTHALATE | | |
| 100950 | <I> WARNING: Cancer and Reproductive Harm - www.p65warnings.ca.gov | 1,3-BUTADIENE; STYRENE | | |
| 100955 | <I> WARNING: Cancer and Reproductive Harm - www.p65warnings.ca.gov | 1,3-BUTADIENE; STYRENE | | |
| 100961 | <I> WARNING: Cancer and Reproductive Harm - www.p65warnings.ca.gov | 1,3-BUTADIENE; CHROMIUM (HEXAVALENT COMPOUNDS); DI (2-ETHYLHEXYL) PHTHALATE (DEHP); STYRENE | | |
| STOCK# | WARNING | CHEMICAL | CAS1 | CAS2 |
| 100990 | <I> WARNING: Cancer and Reproductive Harm - www.p65warnings.ca.gov | 1,3-BUTADIENE; CHROMIUM (HEXAVALENT COMPOUNDS); LEAD AND LEAD COMPOUNDS | 106-99-0 | 106-99-0 |
| 100991 | <I> WARNING: Cancer and Reproductive Harm - www.p65warnings.ca.gov | 1,3-BUTADIENE; CHROMIUM (HEXAVALENT COMPOUNDS); LEAD AND LEAD COMPOUNDS; STYRENE | 106-99-0 | 100-42-5 |
| 100992 | <I> WARNING: Cancer and Reproductive Harm - www.p65warnings.ca.gov | 1,3-BUTADIENE; CHROMIUM (HEXAVALENT COMPOUNDS); LEAD AND LEAD COMPOUNDS; STYRENE | 106-99-0 | 100-42-5 |
| 100993 | <I> WARNING: Cancer and Reproductive Harm - www.p65warnings.ca.gov | DI (2-ETHYLHEXYL) PHTHALATE (DEHP); LEAD AND LEAD COMPOUNDS; STYRENE | | |
| 100997 | <I> WARNING: Cancer and Reproductive Harm - www.p65warnings.ca.gov | 1,3-BUTADIENE; CHROMIUM (HEXAVALENT COMPOUNDS); DI (2-ETHYLHEXYL) PHTHALATE (DEHP); LEAD AND LEAD COMPOUNDS | | |

Proposition 65 Warnings

Below is a listing of all items that come with a Proposition 65 Warning. All eligible items are in numerical order.

| STOCK# | WARNING | CHEMICAL |
|--------|---|---|
| 100998 | <!> WARNING: Cancer and Reproductive Harm - www.p65warnings.ca.gov | 1,3-BUTADIENE; CHROMIUM (HEXAVALENT COMPOUNDS); DI (2-ETHYLHEXYL) PHTHALATE (DEHP); LEAD AND LEAD COMPOUNDS |
| 100999 | <!> WARNING: Cancer and Reproductive Harm - www.p65warnings.ca.gov | DI (2-ETHYLHEXYL) PHTHALATE (DEHP); LEAD AND LEAD COMPOUNDS; STYRENE |
| 101008 | <!> WARNING: Cancer and Reproductive Harm - www.p65warnings.ca.gov | LEAD AND LEAD COMPOUNDS; NICKEL (METALLIC); STYRENE |
| 101009 | <!> WARNING: Cancer and Reproductive Harm - www.p65warnings.ca.gov | LEAD AND LEAD COMPOUNDS; NICKEL (METALLIC); STYRENE |
| 101010 | <!> WARNING: Cancer and Reproductive Harm - www.p65warnings.ca.gov | LEAD AND LEAD COMPOUNDS; NICKEL (METALLIC); STYRENE |
| 101011 | <!> WARNING: Cancer and Reproductive Harm - www.p65warnings.ca.gov | STYRENE |
| 101012 | <!> WARNING: Cancer and Reproductive Harm - www.p65warnings.ca.gov | LEAD AND LEAD COMPOUNDS; STYRENE |
| 101013 | <!> WARNING: Cancer and Reproductive Harm - www.p65warnings.ca.gov | LEAD AND LEAD COMPOUNDS; NICKEL (METALLIC); STYRENE |
| 101014 | <!> WARNING: Cancer - www.p65warnings.ca.gov | STYRENE |
| 101015 | <!> WARNING: Cancer and Reproductive Harm - www.p65warnings.ca.gov | 1,3-BUTADIENE; CHROMIUM (HEXAVALENT COMPOUNDS); DI (2-ETHYLHEXYL) PHTHALATE (DEHP); LEAD AND LEAD COMPOUNDS |
| 101018 | <!> WARNING: Cancer and Reproductive Harm - www.p65warnings.ca.gov | 1,3-BUTADIENE; CHROMIUM (HEXAVALENT COMPOUNDS); DI (2-ETHYLHEXYL) PHTHALATE (DEHP); LEAD AND LEAD COMPOUNDS |
| 101020 | <!> WARNING: Cancer and Reproductive Harm - www.p65warnings.ca.gov | CARBON BLACK; DI (2-ETHYLHEXYL) PHTHALATE (DEHP); DIISONONYL PHTHALATE (DINP); LEAD AND LEAD COMPOUNDS; NICKEL (METALLIC) |

Proposition 65 Warnings

Below is a listing of all items that come with a Proposition 65 Warning. All eligible items are in numerical order.

| STOCK# | WARNING | CHEMICAL | CAS1 |
|--------|---|---|-----------|
| 101028 | <I> WARNING: Cancer and Reproductive Harm - www.p65warnings.ca.gov | LEAD; NICKEL (METALLIC) | 7440-02-0 |
| STOCK# | WARNING | CHEMICAL | |
| 101029 | <I> WARNING: Cancer and Reproductive Harm - www.p65warnings.ca.gov | 1,3-BUTADIENE; CARBON BLACK; DIISONONYL PHTHALATE (DINP); LEAD AND LEAD COMPOUNDS; STYRENE | |
| 101030 | <I> WARNING: Cancer and Reproductive Harm - www.p65warnings.ca.gov | CARBON BLACK; LEAD AND LEAD COMPOUNDS; STYRENE | |
| 101031 | <I> WARNING: Cancer and Reproductive Harm - www.p65warnings.ca.gov | DI (2-ETHYLHEXYL) PHTHALATE (DEHP); LEAD AND LEAD COMPOUNDS; NICKEL (METALLIC) | |
| 101033 | <I> WARNING: Cancer and Reproductive Harm - www.p65warnings.ca.gov | DI (2-ETHYLHEXYL) PHTHALATE (DEHP); LEAD AND LEAD COMPOUNDS | |
| 101034 | <I> WARNING: Reproductive Harm - www.p65warnings.ca.gov | BUTYL BENZYL PHTHALATE | |
| 101035 | <I> WARNING: Reproductive Harm - www.p65warnings.ca.gov | BUTYL BENZYL PHTHALATE | |
| 101036 | <I> WARNING: Cancer and Reproductive Harm - www.p65warnings.ca.gov | DI (2-ETHYLHEXYL) PHTHALATE (DEHP) | |
| 101041 | <I> WARNING: Cancer and Reproductive Harm - www.p65warnings.ca.gov | DI (2-ETHYLHEXYL) PHTHALATE (DEHP); LEAD AND LEAD COMPOUNDS; STYRENE | |
| 101044 | <I> WARNING: Cancer and Reproductive Harm - www.p65warnings.ca.gov | LEAD AND LEAD COMPOUNDS; NICKEL (METALLIC); STYRENE | |
| 101045 | <I> WARNING: Cancer and Reproductive Harm - www.p65warnings.ca.gov | 1,3-BUTADIENE; CARBON BLACK; DIISONONYL PHTHALATE (DINP); LEAD AND LEAD COMPOUNDS; NICKEL (METALLIC); STYRENE | |
| 101046 | <I> WARNING: Reproductive Harm - www.p65warnings.ca.gov | BUTYL BENZYL PHTHALATE | |
| 101048 | <I> WARNING: Cancer and Reproductive Harm - www.p65warnings.ca.gov | CARBON BLACK; DI (2-ETHYLHEXYL) PHTHALATE (DEHP); DIISONONYL PHTHALATE (DINP); LEAD AND LEAD COMPOUNDS; NICKEL (METALLIC) | |

SECTION 3 • PAGE 32

Proposition 65 Warnings

Below is a listing of all items that come with a Proposition 65 Warning. All eligible items are in numerical order.

| STOCK# | WARNING | CHEMICAL | |
|--------|---|--|-----------|
| 101049 | <!> WARNING: Cancer and Reproductive Harm - www.p65warnings.ca.gov | CARBON BLACK; DI (2-ETHYLHEXYL)PHTHALATE (DEHP); DIISONONYL PHTHALATE (DINP); LEAD AND LEAD COMPOUNDS; NICKEL (METALLIC) | |
| STOCK# | WARNING | CHEMICAL | CAS1 |
| 101050 | <!> WARNING: Cancer - www.p65warnings.ca.gov | STYRENE | 100-42-5 |
| 101051 | <!> WARNING: Cancer - www.p65warnings.ca.gov | STYRENE | 100-42-5 |
| 101052 | <!> WARNING: Cancer - www.p65warnings.ca.gov | STYRENE | 100-42-5 |
| 101053 | <!> WARNING: Cancer and Reproductive Harm - www.p65warnings.ca.gov | LEAD | 7439-92-1 |
| 101054 | <!> WARNING: Cancer - www.p65warnings.ca.gov | STYRENE | 100-42-5 |
| 101055 | <!> WARNING: Cancer and Reproductive Harm - www.p65warnings.ca.gov | LEAD | 7439-92-1 |
| 101056 | <!> WARNING: Cancer and Reproductive Harm - www.p65warnings.ca.gov | LEAD | 7439-92-1 |
| 101060 | <!> WARNING: Cancer and Reproductive Harm. www.P65Warnings.ca.gov | LEAD AND LEAD COMPOUNDS | |
| 101061 | <!> WARNING: Cancer and Reproductive Harm. www.P65Warnings.ca.gov | LEAD AND LEAD COMPOUNDS | |
| 101062 | <!> WARNING: Cancer - www.p65warnings.ca.gov | STYRENE | |
| 101063 | <!> WARNING: Cancer - www.p65warnings.ca.gov | STYRENE | |
| 101071 | <!> WARNING: Cancer and Reproductive Harm - www.p65warnings.ca.gov | CARBON BLACK; LEAD AND LEAD COMPOUNDS | |
| 101077 | <!> WARNING: Cancer and Reproductive Harm - www.p65warnings.ca.gov | DI (2-ETHYLHEXYL) PHTHALATE (DEHP); LEAD AND LEAD COMPOUNDS; NICKEL (METALLIC) | |
| 101078 | <!> WARNING: Cancer and Reproductive Harm - www.p65warnings.ca.gov | DI (2-ETHYLHEXYL) PHTHALATE (DEHP); LEAD AND LEAD COMPOUNDS; NICKEL (METALLIC) | |
| 101082 | <!> WARNING: Cancer and Reproductive Harm - www.p65warnings.ca.gov | 1,3-BUTADIENE; CARBON BLACK; DIISONONYL PHTHALATE (DINP); LEAD AND LEAD COMPOUNDS; NICKEL (METALLIC); STYRENE | |
| 101087 | <!> WARNING: Cancer and Reproductive Harm - www.p65warnings.ca.gov | LEAD AND LEAD COMPOUNDS; STYRENE | |
| 101088 | <!> WARNING: Cancer and Reproductive Harm - www.p65warnings.ca.gov | DI (2-ETHYLHEXYL) PHTHALATE; LEAD AND LEAD COMPOUNDS; NICKEL (METALLIC) | |

Proposition 65 Warnings

Below is a listing of all items that come with a Proposition 65 Warning. All eligible items are in numerical order.

| STOCK# | WARNING | CHEMICAL | |
|--------|---|---|-----------|
| 101089 | <I> WARNING: Cancer and Reproductive Harm - www.p65warnings.ca.gov | LEAD AND LEAD COMPOUNDS; NICKEL (METALLIC); STYRENE | |
| 101090 | <I> WARNING: Cancer and Reproductive Harm - www.p65warnings.ca.gov | LEAD AND LEAD COMPOUNDS; NICKEL (METALLIC); STYRENE | |
| 101516 | <I> WARNING: Cancer and Reproductive Harm - www.p65warnings.ca.gov | DI (2-ETHYLHEXYL) PHTHALATE | |
| 101517 | <I> WARNING: Cancer and Reproductive Harm - www.p65warnings.ca.gov | LEAD AND LEAD COMPOUNDS | |
| STOCK# | WARNING | CHEMICAL | CAS1 |
| 110500 | <I> WARNING: Cancer and Reproductive Harm - www.p65warnings.ca.gov | LEAD | 7439-92-1 |
| 110501 | <I> WARNING: Cancer and Reproductive Harm - www.p65warnings.ca.gov | | |
| 110510 | <I> WARNING: Cancer and Reproductive Harm - www.p65warnings.ca.gov | LEAD | 7439-92-1 |
| 110511 | <I> WARNING: Cancer and Reproductive Harm - www.p65warnings.ca.gov | LEAD | 7439-92-1 |
| 110512 | <I> WARNING: Cancer and Reproductive Harm - www.p65warnings.ca.gov | LEAD | 7439-92-1 |
| 110513 | <I> WARNING: Cancer and Reproductive Harm - www.p65warnings.ca.gov | LEAD | 7439-92-1 |
| 110514 | <I> WARNING: Cancer and Reproductive Harm - www.p65warnings.ca.gov | LEAD | 7439-92-1 |
| 110520 | <I> WARNING: Cancer and Reproductive Harm - www.p65warnings.ca.gov | LEAD | 7439-92-1 |
| 110521 | <I> WARNING: Cancer and Reproductive Harm - www.p65warnings.ca.gov | LEAD | 7439-92-1 |
| 110522 | <I> WARNING: Cancer and Reproductive Harm - www.p65warnings.ca.gov | LEAD | 7439-92-1 |
| 110523 | <I> WARNING: Cancer and Reproductive Harm - www.p65warnings.ca.gov | LEAD | 7439-92-1 |
| 110524 | <I> WARNING: Cancer and Reproductive Harm - www.p65warnings.ca.gov | LEAD | 7439-92-1 |
| 110530 | <I> WARNING: Cancer and Reproductive Harm - www.p65warnings.ca.gov | LEAD | 7439-92-1 |
| 110531 | <I> WARNING: Cancer and Reproductive Harm - www.p65warnings.ca.gov | LEAD | 7439-92-1 |
| 110532 | <I> WARNING: Cancer and Reproductive Harm - www.p65warnings.ca.gov | LEAD | 7439-92-1 |
| 110533 | <I> WARNING: Cancer and Reproductive Harm - www.p65warnings.ca.gov | LEAD | 7439-92-1 |
| 110540 | <I> WARNING: Cancer and Reproductive Harm - www.p65warnings.ca.gov | LEAD | 7439-92-1 |
| 110541 | <I> WARNING: Cancer and Reproductive Harm - www.p65warnings.ca.gov | LEAD | 7439-92-1 |
| 110542 | <I> WARNING: Cancer and Reproductive Harm - www.p65warnings.ca.gov | LEAD | 7439-92-1 |
| 110843 | <I> WARNING: Cancer and Reproductive Harm - www.p65warnings.ca.gov | 1,3-BUTADIENE | |
| 110850 | <I> WARNING: Cancer and Reproductive Harm - www.p65warnings.ca.gov | LEAD AND LEAD COMPOUNDS | |

SECTION 3 • PAGE 34

Proposition 65 Warnings

Below is a listing of all items that come with a Proposition 65 Warning. All eligible items are in numerical order.

| STOCK# | WARNING | CHEMICAL |
|--------|---|---|
| 110851 | <!> WARNING: Cancer and Reproductive Harm - www.p65warnings.ca.gov | LEAD AND LEAD COMPOUNDS |
| 110852 | <!> WARNING: Cancer and Reproductive Harm - www.p65warnings.ca.gov | LEAD AND LEAD COMPOUNDS |
| 110854 | <!> WARNING: Cancer and Reproductive Harm - www.p65warnings.ca.gov | |
| 110873 | <!> WARNING: Cancer and Reproductive Harm - www.p65warnings.ca.gov | LEAD AND LEAD COMPOUNDS; 1,3-BUTADIENE |
| 110877 | <!> WARNING: Cancer and Reproductive Harm - www.p65warnings.ca.gov | 1,3-BUTADIENE |
| 110914 | <!> WARNING: Cancer and Reproductive Harm - www.p65warnings.ca.gov | 1,3-BUTADIENE; NICKEL (METALLIC); STYRENE |
| 110971 | <!> WARNING: Cancer and Reproductive Harm - www.p65warnings.ca.gov | CARBON BLACK; LEAD AND LEAD COMPOUNDS |
| 110974 | <!> WARNING: Cancer and Reproductive Harm - www.p65warnings.ca.gov | CARBON BLACK; LEAD AND LEAD COMPOUNDS |
| 111021 | <!> WARNING: Cancer and Reproductive Harm - www.p65warnings.ca.gov | |
| 111023 | <!> WARNING: Cancer and Reproductive Harm - www.p65warnings.ca.gov | |
| 111040 | <!> WARNING: Cancer and Reproductive Harm - www.p65warnings.ca.gov | LEAD |
| 111041 | <!> WARNING: Cancer and Reproductive Harm - www.p65warnings.ca.gov | LEAD |
| 111043 | <!> WARNING: Cancer and Reproductive Harm - www.p65warnings.ca.gov | |
| 111044 | <!> WARNING: Cancer and Reproductive Harm - www.p65warnings.ca.gov | LEAD |
| 111045 | <!> WARNING: Cancer and Reproductive Harm - www.p65warnings.ca.gov | |
| 111050 | <!> WARNING: Cancer and Reproductive Harm - www.p65warnings.ca.gov | LEAD |
| 111058 | <!> WARNING: Cancer and Reproductive Harm - www.p65warnings.ca.gov | LEAD |
| 111060 | <!> WARNING: Cancer and Reproductive Harm - www.p65warnings.ca.gov | |
| 111061 | <!> WARNING: Cancer and Reproductive Harm - www.p65warnings.ca.gov | |
| 111062 | <!> WARNING: Cancer and Reproductive Harm - www.p65warnings.ca.gov | |
| 111063 | <!> WARNING: Cancer and Reproductive Harm - www.p65warnings.ca.gov | |
| 111064 | <!> WARNING: Cancer and Reproductive Harm - www.p65warnings.ca.gov | |
| 111065 | <!> WARNING: Cancer and Reproductive Harm - www.p65warnings.ca.gov | |
| 111066 | <!> WARNING: Cancer and Reproductive Harm - www.p65warnings.ca.gov | LEAD |
| 111067 | <!> WARNING: Cancer and Reproductive Harm - www.p65warnings.ca.gov | LEAD |
| 111068 | <!> WARNING: Cancer and Reproductive Harm - www.p65warnings.ca.gov | LEAD |
| 111073 | <!> WARNING: Cancer and Reproductive Harm - www.p65warnings.ca.gov | LEAD |

Proposition 65 Warnings

Below is a listing of all items that come with a Proposition 65 Warning. All eligible items are in numerical order.

| STOCK# | WARNING | CHEMICAL |
|--------|---|---|
| 111081 | <I> WARNING: Cancer and Reproductive Harm - www.p65warnings.ca.gov | LEAD |
| 111083 | <I> WARNING: Cancer and Reproductive Harm - www.p65warnings.ca.gov | |
| 111084 | <I> WARNING: Cancer and Reproductive Harm - www.p65warnings.ca.gov | |
| 111085 | <I> WARNING: Cancer and Reproductive Harm - www.p65warnings.ca.gov | |
| 111086 | <I> WARNING: Cancer and Reproductive Harm - www.p65warnings.ca.gov | |
| 113001 | <I> WARNING: Cancer and Reproductive Harm - www.p65warnings.ca.gov | LEAD AND LEAD COMPOUNDS; NICKEL (METALLIC); STYRENE |
| 130530 | <I> WARNING: Cancer and Reproductive Harm - www.p65warnings.ca.gov | LEAD |
| 130531 | <I> WARNING: Cancer and Reproductive Harm - www.p65warnings.ca.gov | LEAD |
| 130532 | <I> WARNING: Cancer and Reproductive Harm - www.p65warnings.ca.gov | |
| 130536 | <I> WARNING: Cancer and Reproductive Harm - www.p65warnings.ca.gov | |
| 130540 | <I> WARNING: Cancer and Reproductive Harm - www.p65warnings.ca.gov | LEAD |
| 130542 | <I> WARNING: Cancer and Reproductive Harm - www.p65warnings.ca.gov | LEAD |
| 130543 | <I> WARNING: Cancer and Reproductive Harm - www.p65warnings.ca.gov | LEAD |
| 130544 | <I> WARNING: Cancer and Reproductive Harm - www.p65warnings.ca.gov | LEAD |
| 130546 | <I> WARNING: Cancer and Reproductive Harm - www.p65warnings.ca.gov | |
| 130548 | <I> WARNING: Cancer and Reproductive Harm - www.p65warnings.ca.gov | |
| 130549 | <I> WARNING: Cancer and Reproductive Harm - www.p65warnings.ca.gov | |
| 130550 | <I> WARNING: Cancer and Reproductive Harm - www.p65warnings.ca.gov | LEAD |
| 130551 | <I> WARNING: Cancer and Reproductive Harm - www.p65warnings.ca.gov | LEAD |
| 130552 | <I> WARNING: Cancer and Reproductive Harm - www.p65warnings.ca.gov | LEAD |
| 130553 | <I> WARNING: Cancer and Reproductive Harm - www.p65warnings.ca.gov | |
| 130742 | <I> WARNING: Cancer and Reproductive Harm - www.p65warnings.ca.gov | LEAD |
| 130750 | <I> WARNING: Cancer and Reproductive Harm - www.p65warnings.ca.gov | LEAD |
| 130751 | <I> WARNING: Cancer and Reproductive Harm - www.p65warnings.ca.gov | LEAD |
| 130752 | <I> WARNING: Cancer and Reproductive Harm - www.p65warnings.ca.gov | LEAD |
| 130753 | <I> WARNING: Cancer and Reproductive Harm - www.p65warnings.ca.gov | LEAD |
| 130754 | <I> WARNING: Cancer and Reproductive Harm - www.p65warnings.ca.gov | LEAD |
| 130755 | <I> WARNING: Cancer and Reproductive Harm - www.p65warnings.ca.gov | LEAD |
| 130756 | <I> WARNING: Cancer and Reproductive Harm - www.p65warnings.ca.gov | LEAD |
| 130757 | <I> WARNING: Cancer and Reproductive Harm - www.p65warnings.ca.gov | LEAD |

SECTION 3 • PAGE 36

Proposition 65 Warnings

Below is a listing of all items that come with a Proposition 65 Warning. All eligible items are in numerical order.

| STOCK# | WARNING | CHEMICAL | |
|--------|---|--|-----------|
| 130759 | <!> WARNING: Cancer and Reproductive Harm - www.p65warnings.ca.gov | LEAD | |
| 130760 | <!> WARNING: Cancer and Reproductive Harm - www.p65warnings.ca.gov | LEAD | |
| 130761 | <!> WARNING: Cancer and Reproductive Harm - www.p65warnings.ca.gov | LEAD | |
| STOCK# | WARNING | CHEMICAL | CAS1 |
| 130762 | <!> WARNING: Cancer and Reproductive Harm - www.p65warnings.ca.gov | LEAD | 7439-92-1 |
| 130763 | <!> WARNING: Cancer and Reproductive Harm - www.p65warnings.ca.gov | LEAD | |
| 130764 | <!> WARNING: Cancer and Reproductive Harm - www.p65warnings.ca.gov | LEAD | |
| 130765 | <!> WARNING: Cancer and Reproductive Harm - www.p65warnings.ca.gov | LEAD | |
| 130766 | <!> WARNING: Cancer and Reproductive Harm - www.p65warnings.ca.gov | LEAD | |
| 130951 | <!> WARNING: Cancer and Reproductive Harm - www.p65warnings.ca.gov | LEAD; STYRENE | |
| 130953 | <!> WARNING: Cancer and Reproductive Harm - www.p65warnings.ca.gov | LEAD AND LEAD COMPOUNDS; NICKEL (METALLIC) | |
| 130954 | <!> WARNING: Cancer and Reproductive Harm - www.p65warnings.ca.gov | LEAD AND LEAD COMPOUNDS; NICKEL (METALLIC) | |
| 130955 | <!> WARNING: Cancer and Reproductive Harm - www.p65warnings.ca.gov | LEAD AND LEAD COMPOUNDS; NICKEL (METALLIC) | |
| 130962 | <!> WARNING: Cancer and Reproductive Harm - www.p65warnings.ca.gov | | |
| 131026 | <!> WARNING: Cancer and Reproductive Harm - www.p65warnings.ca.gov | LEAD | |
| 131027 | <!> WARNING: Cancer and Reproductive Harm - www.p65warnings.ca.gov | LEAD | |
| 131028 | <!> WARNING: Cancer and Reproductive Harm - www.p65warnings.ca.gov | LEAD | |
| 131037 | <!> WARNING: Cancer and Reproductive Harm - www.p65warnings.ca.gov | LEAD | |
| STOCK# | WARNING | CHEMICAL | CAS1 |
| 131057 | <!> WARNING: Cancer and Reproductive Harm - www.p65warnings.ca.gov | LEAD | 7439-92-1 |
| 131058 | <!> WARNING: Cancer and Reproductive Harm - www.p65warnings.ca.gov | LEAD | |
| 131059 | <!> WARNING: Cancer and Reproductive Harm - www.p65warnings.ca.gov | LEAD | |
| 131060 | <!> WARNING: Cancer and Reproductive Harm - www.p65warnings.ca.gov | LEAD | |
| 131061 | <!> WARNING: Cancer and Reproductive Harm - www.p65warnings.ca.gov | LEAD | |
| 131063 | <!> WARNING: Cancer and Reproductive Harm - www.p65warnings.ca.gov | LEAD | |
| 131064 | <!> WARNING: Cancer and Reproductive Harm - www.p65warnings.ca.gov | LEAD | |
| 131065 | <!> WARNING: Cancer and Reproductive Harm - www.p65warnings.ca.gov | LEAD | |



▲ For **Proposition 65** warnings please refer to pages 27-39 at the end of this section.

Proposition 65 Warnings

Below is a listing of all items that come with a Proposition 65 Warning. All eligible items are in numerical order.

| STOCK# | WARNING | CHEMICAL |
|--------|---|---------------------------------------|
| 131066 | <I> WARNING: Cancer and Reproductive Harm - www.p65warnings.ca.gov | LEAD |
| 131067 | <I> WARNING: Cancer and Reproductive Harm - www.p65warnings.ca.gov | LEAD |
| 131068 | <I> WARNING: Cancer and Reproductive Harm - www.p65warnings.ca.gov | LEAD |
| 131069 | <I> WARNING: Cancer and Reproductive Harm - www.p65warnings.ca.gov | LEAD |
| 131070 | <I> WARNING: Cancer and Reproductive Harm - www.p65warnings.ca.gov | LEAD |
| 131071 | <I> WARNING: Cancer and Reproductive Harm - www.p65warnings.ca.gov | LEAD |
| 131073 | <I> WARNING: Cancer and Reproductive Harm - www.p65warnings.ca.gov | LEAD |
| 131079 | <I> WARNING: Cancer and Reproductive Harm - www.p65warnings.ca.gov | LEAD |
| 131081 | <I> WARNING: Cancer and Reproductive Harm - www.p65warnings.ca.gov | LEAD |
| 131084 | <I> WARNING: Cancer and Reproductive Harm - www.p65warnings.ca.gov | LEAD |
| 131085 | <I> WARNING: Cancer and Reproductive Harm - www.p65warnings.ca.gov | LEAD |
| 131086 | <I> WARNING: Cancer and Reproductive Harm - www.p65warnings.ca.gov | LEAD |
| 140971 | <I> WARNING: Cancer and Reproductive Harm WWW.p65warnings.ca.gov | CARBON BLACK; LEAD AND LEAD COMPOUNDS |
| 141073 | <I> WARNING: Cancer and Reproductive Harm - www.p65warnings.ca.gov | LEAD |
| 143372 | <I> WARNING: Cancer and Reproductive Harm - www.p65warnings.ca.gov | |
| 271302 | <I> WARNING: Cancer and Reproductive Harm - www.p65warnings.ca.gov | |
| 271304 | <I> WARNING: Cancer and Reproductive Harm - www.p65warnings.ca.gov | |
| 271307 | <I> WARNING: Cancer and Reproductive Harm - www.p65warnings.ca.gov | |
| 271390 | <I> WARNING: Cancer and Reproductive Harm - www.p65warnings.ca.gov | |
| 271391 | <I> WARNING: Cancer and Reproductive Harm - www.p65warnings.ca.gov | |
| 271400 | <I> WARNING: Cancer and Reproductive Harm - www.p65warnings.ca.gov | |
| 271401 | <I> WARNING: Cancer and Reproductive Harm - www.p65warnings.ca.gov | |
| 271404 | <I> WARNING: Cancer and Reproductive Harm - www.p65warnings.ca.gov | |
| 271407 | <I> WARNING: Cancer and Reproductive Harm - www.p65warnings.ca.gov | |
| 271408 | <I> WARNING: Cancer and Reproductive Harm - www.p65warnings.ca.gov | |
| 271409 | <I> WARNING: Cancer and Reproductive Harm - www.p65warnings.ca.gov | |
| 271417 | <I> WARNING: Cancer and Reproductive Harm - www.p65warnings.ca.gov | |
| 271500 | <I> WARNING: Cancer and Reproductive Harm - www.p65warnings.ca.gov | |
| 271501 | <I> WARNING: Cancer and Reproductive Harm - www.p65warnings.ca.gov | |
| 271502 | <I> WARNING: Cancer and Reproductive Harm - www.p65warnings.ca.gov | |

SECTION 3 • PAGE 38

Proposition 65 Warnings

Below is a listing of all items that come with a Proposition 65 Warning. All eligible items are in numerical order.

| STOCK# | WARNING | CHEMICAL | |
|--------|---|-------------------------|-----------|
| 271555 | <I> WARNING: Cancer and Reproductive Harm - www.p65warnings.ca.gov | | |
| 271556 | <I> WARNING: Cancer and Reproductive Harm - www.p65warnings.ca.gov | | |
| 271576 | <I> WARNING: Cancer and Reproductive Harm - www.p65warnings.ca.gov | | |
| 274215 | <I> WARNING: Cancer and Reproductive Harm - www.p65warnings.ca.gov | LEAD AND LEAD COMPOUNDS | |
| STOCK# | WARNING | CHEMICAL | CAS1 |
| 274320 | <I> WARNING: Cancer and Reproductive Harm - www.p65warnings.ca.gov | LEAD | 7439-92-1 |