

 **Lincoln**[®] PRODUCTS

FAUCETS

SECTION 10





Single Handle American Standard® Jocelyn™

Washerless 40mm ceramic disc cartridge. 8" centerset. Metal lever handle. Long swivel spout. 1.8 GPM maximum flow rate at 60 PSI. CAL Green compliant. ADA compliant. Lifetime warranty.

STOCK#	PACK	CASE	DESCRIPTION	MFR#	UPC#
060500	1		3-HOLE LESS SIDE SPRAY CHROME	9316.000.002	012611483509
060503	1		4-HOLE W/MATCHING SIDE SPRAY CHROME	9316.001.002	012611483523



Delta® Classic

Diamond coated ceramic cartridge. 8" centerset. Metal lever handle. Spout swings 180 degrees. 1.8 GPM maximum flow rate at 60 PSI. CAL Green compliant. ADA compliant. Lifetime warranty.

STOCK#	PACK	CASE	DESCRIPTION	MFR#	UPC#
062107	3	72	3-HOLE W/MATCHING SPRAY ON DECK CHROME	300DST	034449593366
062100	1	3	3-HOLE LESS SIDE SPRAY CHROME	100DST	034449593335
062108	1	3	4-HOLE W/MATCHING SIDE SPRAY CHROME	400DST	034449593373



Delta® Collins™

Diamond coated ceramic cartridge. 8" centerset. Metal lever handle. Spout swings 180 degrees. 1.8 GPM maximum flow rate at 60 PSI. CAL Green compliant. ADA compliant. Lifetime warranty.

STOCK#	PACK	CASE	DESCRIPTION	MFR#	UPC#
062103	1	3	3-HOLE LESS SIDE SPRAY STAINLESS STEEL	140SSDST	034449587099
062104	1	3	4-HOLE W/MATCHING SIDE SPRAY CHROME	440DST	034449587952



Kingston Brass® Wyndham

Ball pattern washerless cartridge. 3-Hole installation. 8" centerset. Metal loop lever handle. 1.8 GPM flow rate at 60 PSI. CAL Green compliant. ADA compliant. 10-Year limited warranty.

STOCK#	PACK	CASE	DESCRIPTION	MFR#	UPC#
068100	1	6	BLACK SPRAY ON DECK CHROME	KB563	663370137235
068090	1	6	LESS SIDE SPRAY CHROME	KB561	663370137228



Kohler® Forté®

Ceramic disc cartridge. 4-Hole installation. 8" centerset. Metal lever handle. Temperature memory. High-temperature limit setting for added safety. Arched swing spout. 1.8 GPM maximum flow rate at 60 PSI. CAL Green compliant. ADA compliant. Limited lifetime warranty.

STOCK#	PACK	CASE	DESCRIPTION	MFR#	UPC#
062658	1	89	MATCHING SIDE SPRAY CHROME	K10412-CP	087206888366



Moen® Weatherly®

Flexible supplies with 3/8" compression fittings. With side spray. Duralock™ Quick Connect Installation OPERATION. Lever style handle. Operates with less than 5 Lbs. of force FLOW. Flow is limited to 1.5 GPM (5.7 L/min) at 60 psi. Operates in eco-performance mode by default in aerated and spray stream. CARTRIDGE, 1255™ Duralast™ cartridge for Single-Handle Faucets. Engineered polymers, non-ferrous and stainless steel materials STANDARDS. Third party certified to IAPMO Green, ASME A1 12.18.1/CSA B-125.1 and all applicable requirements referenced therein including NSF 61 & 372, Meets CalGreen and Georgia SB370 requirements. Complies with California Proposition 65 and with the Federal Safe Drinking Water Act. ADA for lever handle.

STOCK#	PACK	CASE	DESCRIPTION	MFR#	UPC#
063200	1		STAINLESS STEEL	M87999SRS	026508221327

Single Handle (Continued)

Peerless® Classic

Washerless ball valve. 8" centerset. Metal lever handle. Spout swivels 360 degrees. 1.8 GPM maximum flow rate at 60 PSI. CAL Green compliant. ADA compliant. Limited lifetime warranty.

STOCK#	PACK	CASE	DESCRIPTION	MFR#	UPC#
062401	1	3	3-HOLE W/BLACK SPRAY ON DECK CHROME	P114LF	034449651905
062402	1	3	4-HOLE W/BLACK SIDE SPRAY CHROME	P115LF	034449651882

Peerless® Westchester™

Maximum 1.5 GPM @ 60 psi. 5.7 L/min @ 414 kPa. Solid brass casted body. One or three hole mount (es-cutcheon optional, not included). Ceramic cartridge. Spout rotates 360°. Red/Blue indicator markings, Polymer braided flexible supply hose with 3/8" compression fitting - 29 1/2" (750 mm) long

STOCK#	PACK	CASE	DESCRIPTION	MFR#	UPC#
062403	1	3	CHROME	PP1923LF	034449883108
062404	1	3	STAINLESS STEEL	PP1923LF-SS	034449882613

Pfister® Brookwood™

Ceramic disc cartridge. 3-Hole installation. 8" centerset. Metal lever handle. Spout swivels 360 degrees. 1.8 GPM maximum flow rate at 60 PSI. CAL Green compliant. ADA compliant. Lifetime warranty.

STOCK#	PACK	CASE	DESCRIPTION	MFR#	UPC#
060085	1	3	MATCHING SPRAY ON DECK CHROME	LF034-3ALC	038877603703
060086	1	3	MATCHING SPRAY ON DECK STAINLESS STEEL	LF034-3ALS	038877603772

Pfister® Pfirst Series™

Washerless stainless steel ball valve. 3-Hole installation. 8" centerset. Metal lever handle. Spout swivels 360 degrees. 1.8 GPM maximum flow rate at 60 PSI. CAL Green compliant. ADA compliant. Lifetime warranty.

STOCK#	PACK	CASE	DESCRIPTION	MFR#	UPC#
060035	1	3	MATCHING SPRAY ON DECK CHROME	G134-3444	038877552360

PROFLO® Classic

Ceramic disc cartridge. 8" centerset. Metal lever handle. With side sprayer. Spout swivels 360 degrees. 1.5 GPM flow rate at 60 PSI. EPA WaterSense approved. CAL Green compliant. ADA compliant. Limited lifetime warranty.

STOCK#	PACK	CASE	DESCRIPTION	MFR#	UPC#
3-Hole Installation.					

060115	12	192	MATCHING SPRAY ON DECK CHROME	PFXC4121CP	781889236239
060116	12	192	MATCHING SPRAY ON DECK BRUSHED NICKEL	PFXC4121BN	781889236222
060110	12	192	BLACK SPRAY ON DECK CHROME	PFXC3121CP	781889236185
060108	12	144	LESS SIDE SPRAY CHROME	PFXC3101CP	781889236161
060112	12	192	LESS SIDE SPRAY BRUSHED NICKEL	PFXC4101BN	781889236192

4-Hole Installation.

060113	6	126	MATCHING SIDE SPRAY CHROME	PFXC4111CP	781889236215
060114	12	192	MATCHING SIDE SPRAY BRUSHED NICKEL	PFXC4111BN	781889236208
060109	12	192	BLACK SIDE SPRAY CHROME	PFXC3111CP	781889236178

PROFLO® Residential

Ceramic disc cartridge. 1 or 3-hole sink installation. 8" centerset. Metal handle. Optional deck plate included. Swivel spout. 1.8 GPM maximum flow rate at 60 PSI. CAL Green compliant. ADA compliant. Limited lifetime warranty.

STOCK#	PACK	CASE	DESCRIPTION	MFR#	UPC#
060118	6	120	LESS SIDE SPRAY CHROME	PFXC1901CP	781889290927

Pulldown Hands-Free Faucets

BioBidet® FLOW 2 Function Spray



The FLOW Single Handle Pull-Down faucet with hands-free motion sensing technology is the next essential upgrade in kitchen technology. The simple and easy installation does not require any hardwiring but features a quick insertion method installation and since it is not hardwired it will be able to function normally even during a power outage. The FLOW faucet meets lead-free standards, a 2-function spray head, durable ceramic cartridge, metallic waterway, and an easy wipe clean finish. Available in polished chrome or nickel. Easily swap between hands-free motion sensing mode or the option to use it as a traditional manual faucet. Pull down the faucet head to automatically spray and release to instantly turn the water off as the head retracts back into place on its own.

STOCK#	PACK	CASE	DESCRIPTION	MFR#	UPC#
060470	1	6	CHROME	UP7000CP	640841951750
060471	1	6	BRUSHED NICKEL	UP7000BN	640841951767
060472	1	6	OIL RUBBED BRONZE	UP7000ORB	601202438365



Pfister® Stellen React®-3 Function Spray

Touch free, actuation indicator, plug-in (battery pack available). 3 function pull down sprayer. 1 or 3 hole installation. 1.8 GPM.

STOCK#	PACK	CASE	DESCRIPTION	MFR#	UPC#
060001	1	3	MATTE BLACK	PLG529ESAB	038877629451
060002	1	3	STAINLESS STEEL	PLG529ESAS	691200480961

Pulldown Faucets



American Standard® McKenzie™

Washerless 40mm ceramic disc cartridge. 1-Hole installation. Metal lever handle. High arc with matching soap dispenser. Sprayhead with adjustable spray pattern and push button activation. Complete with two integral check valves. Separate deck-mount soap dispenser. 1.8 GPM maximum flow rate at 60 PSI. CAL Green compliant. ADA compliant. Lifetime warranty.

STOCK#	PACK	CASE	DESCRIPTION	MFR#	UPC#
060507	1		STAINLESS STEEL	9012.301.075	012611491115



Delta® Trinsic

Touch2O® Technology. DIAMOND Seal® Technology. MagnaTite® Magnetic Docking. Touch-Clean® Spray-head. 1.8 GPM at 60 PSI. 6.8 L/Min @ 414 kPa. One or three hole mount (Escutcheon included with kitchen models. For prep models, order separately). Diamond coated ceramic cartridge. 3/8" O.D. straight, staggered pex supply lines. Spout rotates 360°. Red/Blue indicator markings. Two-function wand. Aerated stream or spray. Dual integral check valves in sprayer. LED indicator light signals on-off, water temperature and when batteries run low. Uses 6 AA (included) or 6 C (optional) batteries. Optional 120V AC adapter available (3 prong grounded outlet required).

STOCK#	PACK	CASE	DESCRIPTION	MFR#	UPC#
062506	1	3	ARCTIC STAINLESS	9113T-AR-DST	034449787086



Hansgrohe® Allegro E Prep

Ceramic disc cartridge. Single-hole installation. Metal lever handle. Sprayhead with full and needle sprays. Spout swivels 150 degrees. 1.8 GPM maximum flow rate at 60 PSI. CAL Green compliant. ADA compliant. Limited lifetime warranty.

STOCK#	PACK	CASE	DESCRIPTION	MFR#	UPC#
060902	1		STEEL OPTIK	H04067860	4011097597706

Pulldown Faucets (Continued)

Hansgrohe® Axor Citterio™

Ceramic disc cartridge. Single-hole installation. Metal lever handle. Sprayhead with full spray and needle spray. Spout arm swivels 360 degrees. 1.8 GPM maximum flow rate at 60 PSI. CAL Green compliant. ADA compliant. Limited lifetime warranty.

STOCK#	PACK	CASE	DESCRIPTION	MFR#	UPC#
060900	1		CHROME	AX39840001	054374617050

Hansgrohe® Talis® S²

Ceramic disc cartridge. Single-hole installation. Metal lever handle. Sprayhead with full and needle sprays. Magnetic sprayhead docking. Spout swivels 150 degrees. 1.8 GPM maximum flow rate at 60 PSI. CAL Green compliant. ADA compliant. Limited lifetime warranty.

STOCK#	PACK	CASE	DESCRIPTION	MFR#	UPC#
060901	1		CHROME	H14877001	4011097658803

Kohler® Bellera™

Ceramic disc cartridge. 1 or 3-hole installation. Right-hand metal lever handle. Sprayhead with stream, sweep, pause settings. Spout swivels 360 degrees. Optional deck plate included. 1.8 GPM flow rate at 60 PSI. CAL Green compliant. ADA compliant. Limited lifetime warranty.

STOCK#	PACK	CASE	DESCRIPTION	MFR#	UPC#
062652	3	40	VIBRANT STAINLESS	K560-VS	885612016812

Kohler® Cruette™

Ceramic disc cartridge. 1 or 3-hole installation. Metal lever handle. Sprayhead with stream, sweep, pause settings. Spout swivels 360 degrees. Optional deck plate included. 1.8 GPM flow rate at 60 PSI. CAL Green compliant. ADA compliant. Limited lifetime warranty.

STOCK#	PACK	CASE	DESCRIPTION	MFR#	UPC#
062655	1	3	CHROME	K780-CP	885612016843
062657	1	80	VIBRANT STAINLESS	K780-VS	885612016836

Kohler® Simplice™

Ceramic disc cartridge. 2-Hole installation. Metal lever handle. Sprayhead with spray, aerated stream, and pause settings. Spout swivels 360 degrees. Remote valve configuration provides simplicity of operation. 1.8 GPM maximum flow rate at 60 PSI. CAL Green compliant. ADA compliant. Limited lifetime warranty.

STOCK#	PACK	CASE	DESCRIPTION	MFR#	UPC#
062610	1	3	CHROME	K-647-CP	6505314720141

Kohler® Simplice™

Ceramic disc cartridge. 1 or 3-hole installation. Right-hand lever handle. Sprayhead with spray, aerated stream, and pause settings. Temperature memory allows faucet to be turned on and off at the temperature set during prior usage. Optional deck plate included. 1.8 GPM maximum flow rate at 60 PSI. CAL Green compliant. ADA compliant. Limited lifetime warranty.

STOCK#	PACK	CASE	DESCRIPTION	MFR#	UPC#
062653	1	3	VIBRANT STAINLESS	596-VS	650531660671
062650	1	3	CHROME	K596-CP	650531660640

KWC® Luna-E®

Single hole installation. Ceramic cartridge 1.8 GPM. Solid brass construction. Deck mounted installation. Spout Reach: 8-3/4". Spout Height: 9-1/8". 360° swivel spout range. Mounting Hole Size: 1 3/8".

STOCK#	PACK	CASE	DESCRIPTION	MFR#	UPC#
060941	1		CHROME	10.441.003.000	630642297201

Pulldown Faucets (Continued)

Moen® Anabelle®



Hydrolock® quick connect installation. Pullout spray with 68" braided hose. Flexible supply lines with 3/8" compression fittings connect directly to supply stop. 360° rotating spout operation. Single handle lever. Operates with less than 5 Lbs. of force. Operates in stream or spray mode in the pullout or retracted position. When filling a vessel outside the sink, the pause feature conveniently stops the flow of water as the wand passes over the counter top FLOW. Flow is limited to 1.5 GPM (5.7 L/min) at 60 psi. Cartridge, 1255™ Duralast™ cartridge for Single-Handle Faucets. Third party certified to IAPMO Green ASME A112.18.1/CSA B-125.1 and all applicable requirements referenced therein including NSF 61/9, Meets CalGreen and Georgia SB370 requirements. Contains no more than 0.25% weighted average lead content. Complies with California Proposition 65 and with the Federal Safe Drinking Water Act. The back-flow protection system in the device consists of two independently operating check valves, a primary and a secondary which prevent back-flow. ADA for lever handle.

STOCK#	PACK	CASE	DESCRIPTION	MFR#	UPC#
063202	1		STAINLESS STEEL	MCA87003SRS	026508209097



Moen® Brantford™

Ceramic disc cartridge. 1 or 3-Hole installation. Metal lever handle. Spout swivels 360-degrees. Optional deck plate included. Resists fingerprints and water spot. Sprayhead with aerated stream, pause and powerful rinse settings. 1.5 GPM flow rate at 60 PSI. EPA Watersense approved. CAL Green compliant. ADA compliant. Limited lifetime warranty.

STOCK#	PACK	CASE	DESCRIPTION	MFR#	UPC#
063206	1	3	SPOT RESIST® STAINLESS STEEL	7185SRS	026508242940

Moen® Tullis®



Reflex™ pulldown system offers smooth operation, easy movement and secure docking. Duralock™ quick connect system. Power Boost™ Technology provides boosted water performance with the push of a button. Flexible supply lines with 3/8" compression fittings. High arc spout provides height and reach to fill or clean large pots while pull out wand provides the maneuverability for cleaning or rinsing. 360° rotating spout operation. Lever style handle. Right hand mount only. Temperature controlled by 100° arc of handle travel. Operates with less than 5 Lbs. of force. Operates in stream or spray mode in the pullout or retracted position FLOW. Standard flow is limited to 1.5GPM (5.7 L/min) at 60 psi. Power Boost™ Button activates Boosted Stream and Boosted Spray. Cartridge, 1255™ Duralast™ for Single-Handle Faucets. Third party certified to IAPMO Green, ASME A112.18.1/CSA B125.1. Certified to NSF 61/9 & 372. Meets CalGreen and Georgia SB370 requirements. Complies with California Proposition 65 and with the Federal Safe Drinking Water Act. The back-flow protection system in the device consists of two independently operating check valves, a primary and a secondary which prevent back-flow. ADA for lever handle.

STOCK#	PACK	CASE	DESCRIPTION	MFR#	UPC#
063203	1		CHROME	M87235SRS	068999203277

Peerless® Westchester®



Maximum 1.5 GPM @ 60 psi, 5.7 L/min @ 414 kPa. One, two, three, four hole mount options (escutcheon and soap dispenser optional, sold separately). Two-function wand; aerated stream or spray. Dual integral check valves in sprayer. Ceramic cartridge. Spout rotates 360°. Red/Blue indicator markings. Polymer braided flexible supply hose with with 3/8" compression fitting - 28 7/8" (733mm) long.

STOCK#	PACK	CASE	DESCRIPTION	MFR#	UPC#
062413	1	3	STAINLESS STEEL	P7923LF-SS	034449883153

Pfister® Ainsley®



Ceramic disc cartridge. 1 to 4 Hole installation. Metal lever handle. Spout swivels 360 degrees. Optional deck plate included. Adjust from powerful spray, to gentle rinse, or something in between. 1.8 GPM flow rate at 60 PSI. Cal Green. ADA compliant. Lifetime warranty.

STOCK#	PACK	CASE	DESCRIPTION	MFR#	UPC#
060087	1		STAINLESS STEEL W/SOAP DISPENSER	LF529-7AYS	038877606193
060088	1		TUSCAN BRONZE W/SOAP DISPENSER	LF529-7AYY	038877606209

Pulldown Faucets (Continued)



Pfister® Ashfield™

Ceramic disc cartridge. 2 to 4 Hole installation. Metal lever handle. Matching soap dispenser. Spout swivels 360 degrees. Optional deck plate included. Adjust from powerful spray, to gentle rinse, or something in between. 1.8 GPM flow rate at 60 PSI. Cal Green. ADA compliant. Lifetime warranty.

STOCK#	PACK	CASE	DESCRIPTION	MFR#	UPC#
060075	1	3	STAINLESS STEEL	GT-529-YPK	038877547663



Pfister® Pfirst Series

Ceramic disc cartridge. 1 to 3 Hole installation. Metal lever handle. Spout swivels 360 degrees. Optional deck plate included. Adjust from powerful spray, to gentle rinse, or something in between. 1.8 GPM flow rate at 60 PSI. Cal Green. ADA compliant. Lifetime warranty.

STOCK#	PACK	CASE	DESCRIPTION	MFR#	UPC#
060016	1		STAINLESS STEEL	G529-PF1S	038877616871



Pfister® Stellen

Ceramic disc cartridge. 1 to 3 Hole installation. Metal lever handle. Spout swivels 360 degrees. Optional deck plate included. Adjust from powerful spray, to gentle rinse, or something in between. 1.8 GPM flow rate at 60 PSI. Cal Green. ADA compliant. Lifetime warranty.

STOCK#	PACK	CASE	DESCRIPTION	MFR#	UPC#
060003	1	3	BLACK	LG-529-SAB	038877621554



Pfister® Wheaton®

Ceramic disc cartridge. 2 or 4 hole installation. Metal lever handle. Spout swivels 360 degrees. Matching soap dispenser. Optional deck plate included. Sprayhead with spray, stream, and pause settings. 1.8 GPM flow rate at 60 PSI. Cal Green. ADA compliant. Lifetime warranty.

STOCK#	PACK	CASE	DESCRIPTION	MFR#	UPC#
060176	1	3	STAINLESS STEEL	GT-529-WH1S	038877616826
060177	1	3	TUSCAN BRONZE	GT-529-WH1Y	038877616833



PROFLO® Gooseneck

Ceramic disc cartridge. 1 or 3-hole installation. Metal lever handle. 2 function sprayhead with pause. Optional deck plate included. 1.8 GPM flow rate at 60 PSI. CAL Green compliant. ADA compliant. Limited lifetime warranty.

STOCK#	PACK	CASE	DESCRIPTION	MFR#	UPC#
060148	1	6	BRUSHED NICKEL	PFXC9011BN	781889292174



PROFLO® Gooseneck

Ceramic disc cartridge. 1 or 3-hole installation. Metal handle. 3-Function sprayer: stream, full spray & pause. 360 degree turn swivel spout. Optional deck plate included. 1.8 GPM flow rate at 60 PSI. CAL Green compliant. ADA compliant. Limited lifetime warranty.

STOCK#	PACK	CASE	DESCRIPTION	MFR#	UPC#
060144	1	6	CHROME	PFXC7011CP	781889258293
060145	1	6	BRUSHED NICKEL	PFXC7011BN	781889258286

Pullout Faucets



American Standard® Easy Touch

Washerless 47mm ceramic disc cartridge with integral hot limit safety stop. 1 or 3-hole installation. Optional deck plate included. Sprayhead with an oversized button that switches the water flow from a stream to a spray. 1.8 GPM maximum flow rate at 60 PSI. CAL Green compliant. ADA compliant. Lifetime warranty.

STOCK#	PACK	CASE	DESCRIPTION	MFR#	UPC#
060504	1		CHROME	6310.002	012611444203
060505	1		STAINLESS STEEL	6310.075	012611444234



Delta® Signature®

Diamond coated ceramic cartridge. 1 or 3-hole installation. Metal lever handle. Spout swivels 120 degrees. Pull-out spout operates in an aerated or spray mode via an easy side-to-side push lever. Optional deck plate included. 1.8 GPM maximum flow rate at 60 PSI. CAL Green compliant. ADA compliant. Limited lifetime warranty.

STOCK#	PACK	CASE	DESCRIPTION	MFR#	UPC#
062105	1	3	CHROME	470DST	034449576697



Kohler® Forté®

Ceramic disc cartridge. 1-Hole installation. Metal lever handle. Swing spout. Sprayhead with touch-control allows you to switch from stream to spray. High-temperature limit setting for added safety. 1.8 GPM maximum flow rate at 60 PSI. CAL Green compliant. ADA compliant. Limited lifetime warranty.

STOCK#	PACK	CASE	DESCRIPTION	MFR#	UPC#
062600	1	3	CHROME	K10433-CP	650531224743
062601	1		VIBRANT STAINLESS	K10433-VS	650531236975



KWC® Luna™

Ceramic disc cartridge with adjustable temperature and flow rate limitation. Metal lever handle. Aerated stream, needle spray. Spout swivels 160 degrees. 1.8 GPM maximum flow rate at 60 PSI. CAL Green compliant. ADA compliant. Limited lifetime warranty.

STOCK#	PACK	CASE	DESCRIPTION	MFR#	UPC#
060940	1		CHROME	10.211.033.000	630642282832



Peerless® Xander®

Maximum 1.5 GPM @ 60 psi. 5.7 L/min @ 414 kPa. One, two, three, four hole mount options (escutcheon and soap dispenser optional. sold separately). Two-function wand; aerated stream or spray. Dual integral check valves in sprayer. Ceramic cartridge. Spout rotates 120°. Red/Blue indicator markings. Polymer braided flexible supply hose with 3/8" compression fitting - 26 1/8" (664 mm) long.

STOCK#	PACK	CASE	DESCRIPTION	MFR#	UPC#
062409	1	6	CHROME	PP6919LF	034449866385
062410	1	6	STAINLESS STEEL	PP6919LF-SS	034449866378



Pfister® Pfirst Series™

Ceramic disc cartridge. 1 or 3-hole installation. Metal lever handle. Spout swivels 360 degrees. Optional deck plate included. 1.8 GPM maximum flow rate at 60 PSI. CAL Green compliant. ADA compliant. Lifetime Warranty.

STOCK#	PACK	CASE	DESCRIPTION	MFR#	UPC#
060064	1	3	WHITE	G133-10WW	038877548783
060065	1	3	CHROME	G133-10CC	038877548769
060066	1	3	STAINLESS STEEL	G133-10SS	038877548776

Pullout Faucets (Continued)



PROFLO®

Ceramic disc cartridge. 1 or 3-hole installation. Metal lever handle. 2 function sprayhead. Optional deck plate included. 1.5 GPM flow rate at 60 PSI. EPA WaterSense approved. CAL Green compliant. ADA compliant. Limited lifetime warranty.

STOCK#	PACK	CASE	DESCRIPTION	MFR#	UPC#
060140	6	72	CHROME	PFXC5150CP	781889236253
060141	6	114	BRUSHED NICKEL	PFXC5150BN	781889236246

Rohl® De' Lux™ Long Sprayhead



Ceramic disc cartridge. 1-Hole installation. Straight lever handle. Swivel spout. Anti-scald device. Double check valve. 1.8 GPM maximum flow rate at 60 PSI. CAL Green compliant. ADA compliant. Limited lifetime warranty.

STOCK#	PACK	CASE	DESCRIPTION	MFR#	UPC#
060983▲	1		SATIN NICKEL	R3810STN	824438028944

Pre Rinse Faucets



Miseno® Pre-Rinse

1.8GPM, Faucet body constructed from solid brass, Drip-free ceramic disc mixing valve cartridge, WaterSense, cUPC/IAPMO listed, NSF 61-9, NSF/ANSI 372, Meets ASME A112.18.1 / CSA B125.1, ADA

STOCK#	PACK	CASE	DESCRIPTION	MFR#	UPC#
060802	1	6	CHROME	MNO500DCP	781889345153
060803	1	6	CHROME	MNO500DSS	781889345160

PROFLO® Pre-Rinse



Max. flow rate: 1.8 gpm at 60 PSI, 1 or 3 hole installation, Optional deck plate included, Ceramic disc cartridge, Two-function sprayer: steam and full spray Warranty and Codes, limited lifetime warranty when installed in residential applications. The warranty is five years in commercial applications. meets ASME: A112.18.1. Compliant with lead content requirements of California AB 1953 Meets ASME: A112.18.1 NSF 61 compliant, cUPC/IAPMO listed, ADA compliant when installed in accordance with ADA guidelines

STOCK#	PACK	CASE	DESCRIPTION	MFR#	UPC#
060121	1	6	CHROME	PFXC5012CP	781889321232
060122	1	6	BRUSHED NICKEL	PFXC5012BN	78188932124

Two Handle Faucets



Delta® Classic

Washerless stem cartridges. 3-hole installation. 8" centerset. Spout swivels 360 degrees. 1.8 GPM flow rate at 60 PSI. CAL Green compliant. Limited lifetime warranty.

STOCK#	PACK	CASE	DESCRIPTION	MFR#	UPC#
--------	------	------	-------------	------	------

Metal wrist blade handles. ADA compliant.

062101	1	6	LESS SIDE SPRAY CHROME	2100LF	034449620055
--------	---	---	------------------------	--------	--------------

Acrylic knob handles.

062102	1	6	LESS SIDE SPRAY CHROME	2102LF	034449620062
--------	---	---	------------------------	--------	--------------

Two Handles (Continued)

Kingston Brass® Americana

1/4 turn washerless cartridges. 3-hole installation. 8" centerset. Swivel spout. 1.8 GPM flow rate at 60 PSI. CAL Green compliant. 10-Year limited warranty.



STOCK#	PACK	CASE	DESCRIPTION	MFR#	UPC#
--------	------	------	-------------	------	------

Metal blade handles.

068027▲	1	6	LESS SIDE SPRAY CHROME	KB120	663370137259
---------	---	---	------------------------	-------	--------------

Acrylic knob handles.

068030▲	1	6	LESS SIDE SPRAY CHROME	KB111	663370137242
---------	---	---	------------------------	-------	--------------

Kingston Brass® Economic

1/4 turn ceramic disc cartridge. 3-hole installation. 8" centerset. Acrylic handles. Swivel spout. 1.8 GPM flow rate at 60 PSI. CAL Green compliant. 10-Year limited warranty.



STOCK#	PACK	CASE	DESCRIPTION	MFR#	UPC#
--------	------	------	-------------	------	------

068952	1	12	LESS SIDE SPRAY CHROME	CK0207	663370320705
--------	---	----	------------------------	--------	--------------

Kingston Brass® Restoration

1/4 turn washerless cartridge. 2-Hole installation. 8" centerset. Porcelain lever handles. 1.8 GPM flow rate at 60 PSI. CAL Green compliant. 10-Year limited warranty.



STOCK#	PACK	CASE	DESCRIPTION	MFR#	UPC#
--------	------	------	-------------	------	------

068077▲	1	6	LESS SIDE SPRAY CHROME	KB3741PL	663370137297
---------	---	---	------------------------	----------	--------------

Moen® Solidad™

3/8" IPS connections. Duralock™ quick connect system for easy installation. Two-handle lever handle makes it easy to adjust the water. Includes side spray hose. 4-Hole installation. 1.5 GPM (5.7 L/Min) Max. Complies with Americans with Disabilities Act (ADA) specifications. Meets current legislation, including ab1953 (California) and s152 (Vermont). Limited lifetime warranty.



STOCK#	PACK	CASE	DESCRIPTION	MFR#	UPC#
--------	------	------	-------------	------	------

063201	1		CHROME	CA87015	026508200179
--------	---	--	--------	---------	--------------

Peerless® Westchester™ Bridge®

Maximum 1.5 GPM @ 60 psi, 5.7 L/min @ 414 kPa. Two handle kitchen faucet for exposed mounting on 2 hole sinks with 8" centers. Ceramic cartridge. Spout rotates 360°. Red/Blue indicator button markings. 1/2" -14 NPSM threaded male inlet shanks.



STOCK#	PACK	CASE	DESCRIPTION	MFR#	UPC#
--------	------	------	-------------	------	------

062408	1	3	STAINLESS STEEL	P2923LF-SS	034449882774
--------	---	---	-----------------	------------	--------------

Pfister® Delton™

Ceramic disc cartridge. 4-Hole installation. 8" centerset. Metal lever handles. Spout swivels 360 degrees. Includes matching side spray. Mounting hardware included. 1.8 GPM flow rate at 60 PSI. CAL Green compliant. ADA compliant. Lifetime warranty.



STOCK#	PACK	CASE	DESCRIPTION	MFR#	UPC#
--------	------	------	-------------	------	------

060056	1	3	MATCHING SIDE SPRAY CHROME	LF0354THC	038877603734
--------	---	---	----------------------------	-----------	--------------

Two Handles (Continued)

Pfister® Pfirst Series™

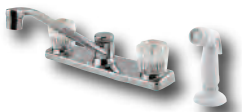
Ceramic disc cartridge. 8" centerset. Metal lever handles. Spout swivels 360 degrees. High Arc. Includes matching side spray. 1.8 GPM flow rate at 60 PSI. CAL Green compliant. ADA compliant. Lifetime warranty.



STOCK#	PACK	CASE	DESCRIPTION	MFR#	UPC#
4-Hole installation.					
060031	1	3	MATCHING SIDE SPRAY CHROME	G136-5000	038877575352
060032	1	3	MATCHING SIDE SPRAY STAINLESS STEEL	G136-500S	038877575369
3-Hole installation.					
060037	1	3	LESS SIDE SPRAY CHROME	G135-7000	038877575291
060038	1	3	LESS SIDE SPRAY STAINLESS STEEL	G135-700S	038877575307

Pfister® Pfirst Series™ With Windsor® Handles

1/4 turn washerless cartridge. 4-Hole installation. 8" centerset. Acrylic handles. 1.5 GPM flow rate at 60 PSI. EPA Watersense approved. CAL Green compliant. Lifetime warranty.



STOCK#	PACK	CASE	DESCRIPTION	MFR#	UPC#
060030	1	3	WHITE SIDE SPRAY CHROME	G135-4100	038877400197

PROFLO® Contemporary

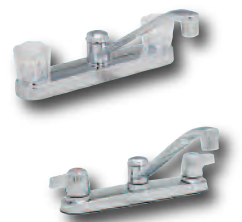
Stainless disc cartridges. 3-Hole installation. 8" centerset. Metal lever handles. Spout swivels 360-degrees. High arc spout. 1.8 GPM flow rate at 60 PSI. CAL Green compliant. ADA Compliant. Limited lifetime warranty.



STOCK#	PACK	CASE	DESCRIPTION	MFR#	UPC#
060106	6	120	LESS SIDE SPRAY CHROME	PFXC6880LSCP	781889292143

PROFLO® Traditional

Ceramic disc cartridges. 3-Hole installation. 8" centerset. Swivel spout. 1.5 GPM flow rate at 60 PSI. EPA WaterSense approved. CAL Green compliant. Limited lifetime warranty.



STOCK#	PACK	CASE	DESCRIPTION	MFR#	UPC#
Acrylic knob handles.					
060124	1	6	LESS SIDE SPRAY CHROME	PFXC1080LSCP	781889300480
Lever handles. ADA compliant.					
060125	1	6	LESS SIDE SPRAY CHROME	PFXC1180LSCP	781889300220

Rohi® Country Collection

1/4 turn ceramic disc cartridges. 4-Hole installation. 8" centerset. Metal lever handles. Three leg bridge faucet. Superior finish (chemical, scratch, and stain resistant). 1.5 GPM flow rate at 60 PSI. EPA Watersense approved. CAL Green compliant. Limited lifetime warranty.



STOCK#	PACK	CASE	DESCRIPTION	MFR#	UPC#
060980▲	1		MATCHING SIDE SPRAY POLISHED NICKEL	A1458LMWSPN2	824438196964



Kingston Brass® Basic

Compression stems. 2-Hole installation. 7" to 9" adjustable centers spread. Blade handle. Swivel spout. 1.8 GPM flow rate at 60 PSI. CAL Green compliant. 10-Year limited warranty.

STOCK#	PACK	CASE	DESCRIPTION	MFR#	UPC#
061002▲	1	6	CHROME	KF102	663370137945



Kingston Brass® Classic

1/4 Turn ceramic disc cartridges. 2-hole installation. 4" to 8-1/2" adjustable centers spread. Metal lever handles. Swivel spout. 1.8 GPM flow rate at 60 PSI. CAL Green compliant. 10-Year limited warranty.

STOCK#	PACK	CASE	DESCRIPTION	MFR#	UPC#
068020▲	1	6	CHROME	KS313C	663370137266



Kingston Brass® Victorian Style

1/4 Turn ceramic disc cartridges. 2-Hole installation. 4" to 9" adjustable centers spread. Metal cross handles. 360 degree turn swivel spout. 1.8 GPM flow rate at 60 PSI. CAL Green compliant. 10-Year limited warranty.

STOCK#	PACK	CASE	DESCRIPTION	MFR#	UPC#
068055▲	1	12	CHROME	KS214C	663370137273



Peerless®

Washerless stem cartridge. 2-Hole installation. 7" to 9" centers. Metal blade handles. High arc. Rotating spout. 1.8 GPM at 60 psi. EPA WaterSense approved. ADA Compliant. Limited lifetime warranty.

STOCK#	PACK	CASE	DESCRIPTION	MFR#	UPC#
062405	1	3	CHROME	P299305LF	03449652254



PROFLO®

2-Hole installation. 7" to 9" centers. Metal lever handles. 6" Swiveling spout. 1.8 GPM at 60 psi. EPA WaterSense approved. ADA Compliant. Limited lifetime warranty.

STOCK#	PACK	CASE	DESCRIPTION	MFR#	UPC#
060403	24	744	CHROME	PFXC800	781889300114



PROFLO®

2-Hole installation. 8" centers. Metal lever handles. 6" Swiveling spout. Traditional bridge style design. 1.8 GPM at 60 psi. EPA WaterSense approved. ADA Compliant. Limited lifetime warranty.

STOCK#	PACK	CASE	DESCRIPTION	MFR#	UPC#
060404	24	600	SOAP DISH CHROME	PFXC800U	781889300138

Bar Faucets



Kingston Brass® Magellan

Quarter turn washerless cartridges. Metal lever handles. 2-Hole installation. 4" centerset. Premium color finish resist tarnishing and corrosion. 1.8 GPM flow rate at 60 PSI. CAL Green compliant. ADA Compliant. Limited lifetime warranty. 10-Year limited warranty.

STOCK#	PACK	CASE	DESCRIPTION	MFR#	UPC#
068505▲	1	6	HIGH SPOUT CHROME	KB491	663370137532



PROFLO®

Ceramic disc cartridges. 3-Hole installation. 4" centerset. Metal Lever Handles. High-arch gooseneck spout. 1.2 GPM maximum flow rate at 60 PSI. EPA WaterSense approved. CAL Green compliant. ADA Compliant. Limited lifetime warranty.

STOCK#	PACK	CASE	DESCRIPTION	MFR#	UPC#
060290	1	6	CHROME	PFWSC6890CP	781889299692
060292	1	6	CHROME	PFWSC1190CP	781889300176

Laundry, Basin and Bubbler Faucets

Two Handle Laundry



Delta® Classic

Quarter turn washerless cartridges. 2 or 3-Hole installation. 4" centerset. Metal blade handles. Complete with hose thread for easy hook-up. Spout swings 360°. 2.2 GPM water flow rate. ADA Compliant. Lifetime faucet and finish limited warranty

STOCK#	PACK	CASE	DESCRIPTION	MFR#	UPC#
062106	1	6	CHROME	2131LF	034449692175



PROFLO®

Ceramic disk cartridges. 2-Hole installation. 4" Centerset. Metal Lever Handles. Flow Rate (with hose thread adapter): Min. 4.0 GPM. Flow Rate (with optional aerator): Max. 1.2 GPM. ADA compliant. Limited lifetime warranty.

STOCK#	PACK	CASE	DESCRIPTION	MFR#	UPC#
060183	1	6	CHROME	PFWSC1120CP	781889300145

Basin Faucets



Single Handle

PROFLO®

Single Hole Faucet Installation. Metal cross handle. Includes hot and cold index buttons. Non-aerated flow. Limited lifetime warranty.

STOCK#	PACK	CASE	DESCRIPTION	MFR#	UPC#
060400	1	36	CHROME	PFX300	781889246054

Bubblers

Drinking Fountain Bubblers

Self closing bubbler valve. Metal knob handle. Adjustable water flow. 1/2" NPT inlet.

STOCK#	PACK	CASE	DESCRIPTION	MFR#	UPC#
063305	1		CHROME BOXED	LIN063305	054374956449
063300▲	1		CHROME BULK	10341LF	091712399698

Replacement stem for above.

063308▲	12	144	STEM	BAGGED	054374209071
---------	----	-----	------	--------	--------------

Push Button Drinking Water Bubbler

The bubbler is activated by a button. 3/8" IPS inlet.

STOCK#	PACK	CASE	DESCRIPTION	MFR#	UPC#
063306	1		CHROME BOXED	LIN063306	054374564491

Replacement cartridge.

3/8" IPS inlet. This cartridge acts as an on/off valve. When pressed, the cartridge allows the water to flow, and when released, the self-closing action stops the water flow.

STOCK#	PACK	CASE	DESCRIPTION	MFR#	UPC#
063301	12	144	CARTRIDGE UNIVERSAL REPLACEMENT	BAGGED 10345LF	05437449925



Single Handle

American Standard® Fluent®

Brass body. Washerless 35 mm ceramic disc valve cartridge with integral hot limit safety stop. Braided flexible supply hoses with 3/8" compression connectors. 20" (500 mm) long flexible stainless steel drain cable is pre-assembled to faucet body. Metal Speed Connect® drain body with 1-1/4" (32 mm) tail piece. 1.2 GPM/4.5 L/min. maximum flow rate. Fitting can be mounted on 4" centers using optional escutcheon (2064.101P) or single hole mounting method.



STOCK#	PACK	CASE	DESCRIPTION	MFR#	UPC#
060633	1		CHROME	7186.101.002	012611559136
060634	1		BRUSHED NICKEL	7186.101.295	012611559150

American Standard® Jocelyn®

Single control lavatory faucet on 4" centers. Washerless 40mm ceramic disc valve cartridge. Durable cast brass waterway with 1/2" male threaded brass inlet shanks. Metal body with color matched underbody. Lever handle. 20" (500mm) long flexible stainless steel drain cable is pre-assembled to faucet body. Non-Metallic Speed Connect™ drain body with 1-1/4 inch (32mm) tail piece. 1.5 GPM/5.7L/min. maximum flow rate.



STOCK#	PACK	CASE	DESCRIPTION	MFR#	UPC#
060607	1		CHROME	9316.110.002	012611483370
060608	1		BRUSHED NICKEL	9316.110.295	012611483387

American Standard® Reliant 3®

All metal body with choice of metal lever, indexed metal lever handle or optional extra long lever handle. Washerless 47 mm ceramic disc valve cartridge with integral hot limit safety stop. Durable cast brass waterway. Braided flexible supply hoses with 3/8" compression connections. 20" (500 mm) long flexible stainless steel drain cable is pre-assembled to faucet body. Metal Speed Connect® drain body (on 7385.000 & 7385.008) with 1-1/4" (32 mm) tail piece. 1.2 GPM/4.5 L/min. maximum flow rate.



STOCK#	PACK	CASE	DESCRIPTION	MFR#	UPC#
060642	1		CHROME	7385.000.002	012611399855

Delta® Classic Style

Diamond coated ceramic cartridges. 3-hole installation. 4" centerset. Metal lever handle. Metal drain with pop-up type fitting with plated flange and stopper. 1.5 GPM flow rate at 60 PSI. EPA WaterSense approved. CAL Green compliant. ADA compliant. Limited lifetime warranty.



STOCK#	PACK	CASE	DESCRIPTION	MFR#	UPC#
062520	1	3	CHROME	520MPUDST	034449581646

Hansgrohe® Focus™

Ceramic disc cartridge. Single hole centerset installation. With boltic handle lock. Metal lever handle Includes base plate. Includes pop-up assembly. 1.5 GPM flow rate at 60 PSI. EPA WaterSense approved. CAL Green compliant. ADA compliant. Limited lifetime warranty.



STOCK#	PACK	CASE	DESCRIPTION	MFR#	UPC#
060903	1		BRUSHED NICKEL	H04370820	

Kingston Brass® Wyndham

1/4 turn washerless cartridge. 3-hole installation. 4" centerset. Metal loop lever handle. Brass pop-up. 1.2 GPM flow rate at 60 PSI. EPA WaterSense approved. CAL Green compliant. ADA compliant. 10-Year limited warranty.



STOCK#	PACK	CASE	DESCRIPTION	MFR#	UPC#
068315▲	1	6	CHROME	KB511B	663370137327

Kohler® July™

Ceramic disc cartridge. Single hole centerset installation. Metal lever handle allows for both on/off activation and temperature setting. Brass pop-up assembly. 1.2 GPM flow rate at 60 PSI. EPA WaterSense approved. CAL Green compliant. ADA compliant. Limited lifetime warranty.



STOCK#	PACK	CASE	DESCRIPTION	MFR#	UPC#
062576	1	213	CHROME	K98146-4-CP	885612154996

Single Handle (Continued)

Miseno® Elysa®

Flow rate: 1.2GPM, Height: 8-3/16", Spout height: 4-3/8", Spout reach: 4-7/16", Material: Brass, Max. deck thickness: 2", Valve type: Ceramic disc. Includes pop-up drain assembly. Faucet includes escutcheon plate to cover additional faucet holes. Complies with ADA standards. Warranty: Limited lifetime. WaterSense certified. Low-lead compliant.



STOCK#	PACK	CASE	DESCRIPTION	MFR#	UPC#
060853	1	6	CHROME	MNO611CP	781889312735
060854	1	6	BRUSHED NICKEL	MNO611BN	781889312742

Miseno® Santi-V

1.2 GPM. Faucet body constructed of brass. Pull-spray with 2 spray functions. Swivel spout allows for greater access to all areas of the sink. Single lever handle controls the flow and temperature of the water. Faucet includes ceramic disc rough in valve. Includes pop-up drain assembly. ADA compliant. Low lead compliant.



STOCK#	PACK	CASE	DESCRIPTION	MFR#	UPC#
060857	1	6	BRUSHED NICKEL	MNO521BN	781889310731

Peerless®

Washerless ball valve. 3-hole installation. 4" centerset. Acrylic knob handle. Plastic pop-up assembly. 1.2 GPM flow rate at 60 PSI. EPA WaterSense approved. CAL Green compliant. Limited lifetime warranty.



STOCK#	PACK	CASE	DESCRIPTION	MFR#	UPC#
062450	1	3	CHROME	135LF	034449652315

Pfister® Avalon

Ceramic disc cartridge. 1 or 3-Hole Installation. Metal lever handle. Optional deck plate sold separately. Push & seal pop-up. 1.2 GPM flow rate at 60 PSI. EPA WaterSense approved. CAL Green compliant. ADA compliant. Lifetime warranty.



STOCK#	PACK	CASE	DESCRIPTION	MFR#	UPC#
060004	1		CHROME	LG42C-B1C	038877609965

Pfister® Jaida™

Ceramic disc cartridge. 1 or 3-Hole Installation. Metal lever handle. Optional deckplate included. Waterfall through spout. Push & seal pop-up. 1.2 GPM flow rate at 60 PSI. EPA WaterSense approved. CAL Green compliant. ADA compliant. Lifetime warranty.



STOCK#	PACK	CASE	DESCRIPTION	MFR#	UPC#
060014	1	2	CHROME	LF042-JDCW	038877604458

Pfister® Parisa™

Ceramic disc cartridge. 1 or 3-Hole Installation. Metal lever handle. Optional deckplate included. Push & seal pop-up. 1.2 GPM flow rate at 60 PSI. EPA WaterSense approved. CAL Green compliant. ADA compliant. Lifetime warranty.



STOCK#	PACK	CASE	DESCRIPTION	MFR#	UPC#
060094	1	3	CHROME	LF042-PRCC	038877604106
060095	1	3	BRUSHED NICKEL	LF042-PRKK	038877604113

Pfister® Pfirst Series™

Washerless stainless steel ball valve. 3-hole installation. 4" centerset. Metal lever handle. Includes metal pop-up assembly. 1.2 GPM flow rate at 60 PSI. EPA WaterSense approved. CAL Green compliant. ADA compliant. Lifetime warranty.



STOCK#	PACK	CASE	DESCRIPTION	MFR#	UPC#
060013	1	3	CHROME	LG142-6000	038877607480



Single Handle (Continued)

PROFLO® PFWSC3016 Series

Ceramic disc cartridge. 3-hole installation. 4" centerset. Metal lever handle. Includes 50/50 pop-up drain. 1.2 GPM flow rate at 60 PSI. EPA WaterSense approved. CAL Green compliant. ADA compliant. Limited lifetime warranty.



STOCK#	PACK	CASE	DESCRIPTION	MFR#	UPC#
060217	1	12	CHROME	PFWSC3016CP	781889299470
060218	1	12	BRUSHED NICKEL	PFWSC3016BN	781889299463
060219	1	12	OIL RUBBED BRONZE	PFWSC3016ORB	781889299487

PROFLO® PFWSC4746 Series

Ceramic disc cartridge with adjustable temperature limit stop. 3-hole installation. 4" centerset. Metal lever handle. Includes metal pop-up assembly. 1.2 GPM flow rate at 60 PSI. EPA WaterSense approved. CAL Green compliant. ADA compliant. Limited lifetime warranty.



STOCK#	PACK	CASE	DESCRIPTION	MFR#	UPC#
060247	1	6	CHROME	PFWSC4746CP	781889299548
060248	1	6	BRUSHED NICKEL	PFWSC4746BN	781889236147

PROFLO® Orrs Series

One piece brass body. Ceramic cartridge. Metal lever handle. Includes metal pop-up. NSF61 compliant. 1.2 GPM water saving aerator. Complies with lead plumbing law. ADA compliant.



STOCK#	PACK	CASE	DESCRIPTION	MFR#	UPC#
060270	1	8	CHROME	PFWSC8851CP	781889314517

Two Handle

American Standard® Colony® Soft

Centerset lavatory faucet on 4" centers. 1/4 turn washerless ceramic disc valve cartridges. 1.2 GPM/4.5 L/min. maximum flow rate. Durable cast brass waterways with one-half inch male inlet shanks. Metal body. Color matched underbody. Lever handles. 50/50 Pop-up drain.



STOCK#	PACK	CASE	DESCRIPTION	MFR#	UPC#
060629	1		CHROME	2275.500.002	012611267895

American Standard® Fluent®

Durable cast brass spout. 1/4 turn washerless ceramic disc valve cartridges. Metal lever handles. Handles available with optional red and blue indicators (7186.211). One-half inch brass male inlet shanks with brass supply nuts. 20 inch (500mm) long flexible stainless steel drain cable is pre-assembled to faucet body. Metal Speed Connect® drain body with 1-1/4 inch (32mm) tail piece (7186.201 & 7186.211). Non-metallic Speed Connect drain body with 1-1/4 inch (32mm) tail piece (7186.203) 1.2 GPM/4.5 L/min. maximum flow rate.



STOCK#	PACK	CASE	DESCRIPTION	MFR#	UPC#
060637	1		CHROME	7186.201.002	012611559174
060638	1		OIL RUBBED BRONZE	7186.201.224	012611559181
060639	1		BRUSHED NICKEL	7186.201.295	0126115591

American Standard® Winthrop®

Centerset lavatory faucet on 4" centers. 1/4 turn washerless ceramic disc valve cartridges - reversible for use on either "hot" or "cold" side. Durable cast brass waterways with one-half inch male inlet shanks. Metal body. Color matched underbody. 20" (500mm) long flexible stainless steel drain cable is pre-assembled to faucet body. Non-Metallic Speed Connect™ drain body with 1-1/4 inch (32mm) tail piece. 1.5 GPM/5.7L/min. maximum flow rate. Metal lever handles.



STOCK#	PACK	CASE	DESCRIPTION	MFR#	UPC#
060613	1		CHROME	9046.200.002	012611483349

Two Handle (Continued)

Delta® Ashlyn™



DIAMOND Seal® Technology. Maximum 1.2 GPM @ 60 psi, 4.54 L/min @ 414 kPa. Three hole mount. Diamond coated ceramic cartridge. 3/8" O.D. straight PEX supply lines. Models without "TP" suffix have metal drain with pop-up type fitting with plated flange and stopper. Models with "TP" suffix have polypropylene pop-up type drain fitting with plated metal flange and stopper cap. Optional thick deck kit (RP76691) adds 1-1/4" max. deck thickness.

STOCK#	PACK	CASE	DESCRIPTION	MFR#	UPC#
062505	1	3	CHROME	2564-MPU-DST	034449743600

Delta® Classic



Solid brass fabricated body., 4" (102 mm) centerset. 3 7/16" (87 mm) long spout. Hot and cold stems are interchangeable. Control mechanism is the rotating cylinder type with stainless steel plate and 180° rotation, with replaceable non-metallic seats operating in stainless steel lined sockets. 1/2"-14 NPSM threaded male inlet shanks. Models with Snap-N-Pop-Up® drain have polypropylene pop-up type fitting with plated flange and stopper., Models with suffix "MPU" have metal drain have popup type fitting with plated flange and stopper. Maximum flow rate 1.5 GPM @ 60 PSI.

STOCK#	PACK	CASE	DESCRIPTION	MFR#	UPC#
062522	1	6	CHROME	2522LF-MPU	034449620154

Delta® Lahara®



Diamond coated ceramic disc cartridges. 3-hole installation. 4" centerset. Includes metal pop-up assembly. 1.5 GPM flow rate at 60 PSI. EPA WaterSense approved. CAL Green compliant. ADA compliant. Lifetime warranty.

STOCK#	PACK	CASE	DESCRIPTION	MFR#	UPC#
062524	1	3	CHROME	2538-MPU-DST	034449686174

Kingston Brass® Americana



Washerless cartridges. 3-hole installation. 4" centerset. Acylic knob handles. Plastic construction. Includes plastic pop-up assembly. 1.2 GPM maximum flow rate at 60 PSI. EPA WaterSense approved. CAL Green compliant. 10-Year limited warranty

STOCK#	PACK	CASE	DESCRIPTION	MFR#	UPC#
068984	1	6	CHROME	L0206P	663370318603
068986	1	6	LESS POP-UP CHROME	L0206	663370318597

Kingston Brass® English Vintage



Washerless cartridges. 3-hole installation. 4" centerset. Metal lever handles. Includes pop-up assembly. 1.2 GPM maximum flow rate at 60 PSI. EPA WaterSense approved. CAL Green compliant. ADA Compliant. 10-Year limited warranty.

STOCK#	PACK	CASE	DESCRIPTION	MFR#	UPC#
068058▲	1	6	CHROME	KB601BL	663370249051

Kingston Brass® Teapot



Washerless cartridges. 3-hole installation. 4" centerset. With porcelain and oak lever handles. Includes ABS/brass pop-up assembly. 1.2 GPM maximum flow rate at 60 PSI. EPA WaterSense approved. CAL Green compliant. ADA Compliant. 10-Year limited warranty.

STOCK#	PACK	CASE	DESCRIPTION	MFR#	UPC#
068260▲	1	6	CHROME	KB601B	663370137358



Two Handle (continued)

Kingston Brass® Traditional

Washerless cartridges. 3-hole installation. 4" centerset. Includes brass pop-up assembly. 1.2 GPM maximum flow rate at 60 PSI. EPA WaterSense approved. CAL Green compliant. 10-Year limited warranty.



STOCK#	PACK	CASE	DESCRIPTION	MFR#	UPC#
Acrylic knob handles.					
068230▲	1	6	CHROME	KB161B	663370137754
068235▲	1	6	LESS POP-UP CHROME	KB161LP	663370137747
Metal knob handles.					
068250▲	1	12	LESS POP-UP CHROME	KF103A	663370139420

Kohler® Alteo®

Quarter-turn washerless ceramic disc cartridges. 3-hole installation. 4" centerset. Metal lever handles. Includes pop-up assembly. 1.5 GPM maximum flow rate at 60 PSI. EPA WaterSense approved. CAL Green compliant. ADA compliant. Limited lifetime warranty.



STOCK#	PACK	CASE	DESCRIPTION	MFR#	UPC#
062575	1	3	CHROME	K45100-4-CP	650531977144
062577	1	3	BRUSHED NICKEL	K45100-4-BN	650531977151

Kohler® Archer™

Quarter-turn washerless ceramic disc cartridges. 3-hole installation. 4" centerset. Metal lever handles. Includes pop-up assembly. 1.5 GPM maximum flow rate at 60 PSI. EPA WaterSense approved. CAL Green compliant. ADA compliant. Limited lifetime warranty.



STOCK#	PACK	CASE	DESCRIPTION	MFR#	UPC#
062645	1	3	CHROME	K11075-4-CP	650531540706

Kohler® Devonshire®

Quarter-turn washerless ceramic disc cartridges. 3-hole installation. 4" centerset. Metal lever handles. Includes pop-up assembly. 1.5 GPM maximum flow rate at 60 PSI. EPA WaterSense approved. CAL Green compliant. ADA compliant. Limited lifetime warranty.



STOCK#	PACK	CASE	DESCRIPTION	MFR#	UPC#
062563	1		CHROME	393-N4-CP	650531699992

Kohler® Forté®

Ceramic disc cartridges. 3-hole installation. 4" centers. Metal sculpted lever handles. Includes metal pop-up assembly. 1.2 GPM maximum flow rate at 60 PSI. EPA WaterSense approved. CAL Green compliant. ADA compliant. Limited lifetime warranty.



STOCK#	PACK	CASE	DESCRIPTION	MFR#	UPC#
062635	1	6	CHROME	K10270-4-CP	087206829918

Moen® Eva™

Washerless Cartridges. 3-hole 4" installation. 4" centerset. Metal lever handle. Includes metal pop-up assembly. 1.5 GPM maximum flow rate at 60 PSI. EPA WaterSense approved. CAL Green compliant. ADA Compliant. Limited lifetime warranty.



STOCK#	PACK	CASE	DESCRIPTION	MFR#	UPC#
063100	1	6	CHROME	6410	026508153109

Two Handle (Continued)

Peerless®

Washerless stem cartridges. 3-hole installation. 4" centerset. Ergonomic blades handles. Includes plastic pop-up assembly. 1.2 GPM flow rate at 60 PSI. EPA WaterSense approved. CAL Green compliant. ADA compliant. Limited lifetime warranty.



STOCK#	PACK	CASE	DESCRIPTION	MFR#	UPC#
062451	1	3	CHROME	P299628LF	034449652575

Peerless® Westchester®

The ceramic discs inside the valve improve durability. 1.0 GPM. 3-Hole Installation. 4" between hole centers. A pop-up drain assembly in a matching finish is included in the box. Lifetime Limited Warranty. WaterSense Labeled.



STOCK#	PACK	CASE	DESCRIPTION	MFR#	UPC#
062453	1	3	CHROME	P2523LF	034449883214
062454	1	3	BRUSHED NICKEL	P2523LF-BN	034449882958

Pfister® Arlington™

Ceramic disc cartridges. 3-hole installation. 4" centerset. Metal lever handles. Includes push & seal pop-up. 1.2 GPM maximum flow rate at 60 PSI. EPA WaterSense approved. CAL Green compliant. ADA Compliant. Lifetime warranty.



STOCK#	PACK	CASE	DESCRIPTION	MFR#	UPC#
060082	1	2	TUSCAN BRONZE	LF048-ARYY	038877604168
060005	1		BRUSHED NICKEL	LF048-ARKK	038877605691

Pfister® Canton™

Ceramic disc cartridges. 3-hole installation. 4" centerset. Metal lever handles. Includes push & seal pop-up. 1.2 GPM maximum flow rate at 60 PSI. EPA WaterSense approved. CAL Green compliant. ADA Compliant. Lifetime warranty.



STOCK#	PACK	CASE	DESCRIPTION	MFR#	UPC#
060083	1	3	CHROME	LF048-CNCC	038877604175
060084	1	3	BRUSHED NICKEL	LF048-CNKK	038877604182

Pfister® Langston™

Ceramic disc cartridges. 3-hole installation. 4" centerset. Metal lever handles. Spout swings 360 degrees. Includes push & seal pop-up. 1.2 GPM maximum flow rate at 60 PSI. EPA WaterSense approved. CAL Green compliant. ADA Compliant. Lifetime warranty.



STOCK#	PACK	CASE	DESCRIPTION	MFR#	UPC#
060009	1	3	CHROME	LF043-LNKK	038877605639

Pfister® Pfirst Series™ - Acrylic Handles

Washerless cartridge. 3-hole installation. 4" centerset. Acrylic knob handles. Includes plastic pop-up assembly. 1.2 GPM maximum flow rate at 60 PSI. EPA WaterSense approved. CAL Green compliant. Lifetime warranty.



STOCK#	PACK	CASE	DESCRIPTION	MFR#	UPC#
060011	1	3	CHROME	LG143-6002	038877607589

Pfister® Pfirst Series™ - Metal Handles

Washerless cartridges. 3-hole installation. 4" centerset. Metal lever handles. Includes metal pop-up assembly. 1.2 GPM maximum flow rate at 60 PSI. EPA WaterSense approved. CAL Green compliant. ADA compliant. Lifetime warranty.



STOCK#	PACK	CASE	DESCRIPTION	MFR#	UPC#
060096	1	3	CHROME	LG143-6100	038877607602
060097	1	3	BRUSHED NICKEL	LG143-610K	038877607619



Two Handle (Continued)

PROFLO® High Arc

Ceramic disc cartridges. 3-hole installation. 4" centerset. Metal lever handles. Includes brass pop-up assembly. 1.2 GPM maximum flow rate at 60 PSI. EPA WaterSense approved. CAL Green compliant. ADA Compliant. Limited lifetime warranty.



STOCK#	PACK	CASE	DESCRIPTION	MFR#	UPC#
060244	1	6	CHROME	PFWSC4840CP	781889299579
060245	1	6	BRUSHED NICKEL	PFWSC4840BN	781889299562
060246	1	6	OIL RUBBED BRONZE	PFWSC4840ORB	781889299586

PROFLO® Willett

Ceramic disc cartridges. 3-hole installation. 4" centerset. Metal lever handles. Includes brass pop-up assembly. 1.2 GPM maximum flow rate at 60 PSI. Meets ANSI:A12.18.1M cUPC/IAPMO Listed, WaterSense Certified AB1953 Certified.



STOCK#	PACK	CASE	DESCRIPTION	MFR#	UPC#
060200	1	6	CHROME	PFWSC2840CP	781889299388
060201	1	6	BRUSHED NICKEL	PFWSC2840BN	781889299371

PROFLO® - Metal Handles

Ceramic disc cartridges. 3-hole installation. 4" centerset. Metal lever handles. 1.2 GPM maximum flow rate at 60 PSI. EPA WaterSense approved. CAL Green compliant. ADA Compliant. Limited lifetime warranty.



STOCK#	PACK	CASE	DESCRIPTION	MFR#	UPC#
060210	12	180	LESS POP UP CHROME	PFWSC1140LCP	781889300169

Ceramic disc cartridges. 3-hole installation. 4" centerset. Metal blade handles. 1.2 GPM maximum flow rate at 60 PSI. EPA WaterSense approved. CAL Green compliant. ADA Compliant. Limited lifetime warranty.



060212	12	144	LESS POP UP CHROME	PFWSC1340LCP	781889300466
--------	----	-----	--------------------	--------------	--------------

Stainless disc cartridges. 3-hole installation. 4" centerset. Metal lever handles. Includes metal pop-up assembly. 1.2 GPM maximum flow rate at 60 PSI. EPA WaterSense approved. CAL Green compliant. ADA Compliant. Limited lifetime warranty.



060215	6	144	CHROME	PFWSC1240CP	781889299982
060216	12	144	BRUSHED NICKEL	PFWSC1240BN	781889299975

Ceramic Disc Cartridges. 3-hole installation. 4" centerset. Metal lever handles. Includes brass pop-up assembly. 1.2 GPM maximum flow rate at 60 PSI. EPA WaterSense approved. CAL Green compliant. ADA Compliant. Limited lifetime warranty.



060254	1	6	CHROME	PFWSC5240CP	781889300008
060255	1	6	BRUSHED NICKEL	PFWSC5240BN	781889299999
060256	1	6	OIL RUBBED BRONZE	PFWSC5240ORB	781889300015

Ceramic disc cartridges. 3-hole installation. 4" centerset. Metal lever handles. Includes brass pop-up assembly. 1.2 GPM maximum flow rate at 60 PSI. EPA WaterSense approved. CAL Green compliant. ADA Compliant. Limited lifetime warranty.



060257	1	6	CHROME	PFWSC6840CP	781889299630
060258	1	6	BRUSHED NICKEL	PFWSC6840BN	781889299623

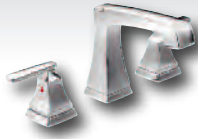
PROFLO® - Acrylic Handles

Ceramic disc cartridges. 3-hole installation. 4" centerset. Acrylic knob handles. 1.2 GPM maximum flow rate at 60 PSI. EPA WaterSense approved. CAL Green compliant. Limited lifetime warranty.



STOCK#	PACK	CASE	DESCRIPTION	MFR#	UPC#
060213	1	6	METAL POP-UP CHROME	PFWSC1040CP	781889256237
060214	1	6	ABS POP-UP CHROME	PFWSC1040ACP	781889300459

Widespread Lavatory Sink Faucets



Delta® Ashlyn™

DIAMOND Seal® Technology, EZ Anchor® Top Down Mounting. Maximum 1.2 GPM @ 60 psi, 4.54 L/min @ 414 kPa, Three hole mount. Diamond coated ceramic cartridge. 3/8" O.D. straight, staggered PEX supply lines.

STOCK#	PACK	CASE	DESCRIPTION	MFR#	UPC#
062503	1	3	CHROME	3564-MPU-DST	034449745345



Delta® Lahara®

Diamond coated ceramic cartridges. 3-Hole installation. Adjustable center-to-center distance between handle installation holes (4"-16"). Metal lever handles. Includes metal pop-up assembly. 1.2 GPM flow rate at 60 PSI. EPA WaterSense approved. CAL Green compliant. ADA compliant. Limited lifetime warranty.

STOCK#	PACK	CASE	DESCRIPTION	MFR#	UPC#
062502	1	3	CHROME	3538MPUDST	034449642811



Kingston Brass®

Quarter turn washerless cartridges. 3-Hole installation. 4" to 8" center spread installation. Includes pop-up assembly. 1.2 GPM maximum flow rate at 60 PSI. EPA WaterSense approved. CAL Green compliant. 10-Year limited warranty.

STOCK#	PACK	CASE	DESCRIPTION	MFR#	UPC#
068267▲	1	6	CHROME	KB961+	663370187612



Kohler® Alteo®

Quarter-turn washerless ceramic disc cartridges. 3-Hole installation. Adjustable center-to-center distance between handle installation holes (8"-16"). Metal lever handles. High-arched spout. Includes pop-up assembly. 1.2 GPM maximum flow rate at 60 PSI. EPA WaterSense approved. CAL Green compliant. ADA compliant. Limited lifetime warranty.

STOCK#	PACK	CASE	DESCRIPTION	MFR#	UPC#
062570	3	95	CHROME	K45102-4-CP	650531977045
062572	3	95	BRUSHED NICKEL	K45102-4-BN	650531977052



Kohler® Archer®

Ceramic disc cartridges. 3-Hole installation. 8" center-to-center. Metal lever handles. Includes pop-up assembly. 1.5 GPM maximum flow rate at 60 PSI. EPA WaterSense approved. CAL Green compliant. ADA compliant. Limited lifetime warranty.

STOCK#	PACK	CASE	DESCRIPTION	MFR#	UPC#
062560	1	6	CHROME	K11076-4-CP	650531540737



Kohler® Devonshire®

Quarter-turn washerless ceramic disc cartridges. 3-Hole installation. Adjustable center-to-center distance between handle installation holes (8"-16"). Metal lever handles. Includes pop-up assembly. 1.5 GPM maximum flow rate at 60 PSI. EPA WaterSense approved. CAL Green compliant. ADA compliant. Limited lifetime warranty.

STOCK#	PACK	CASE	DESCRIPTION	MFR#	UPC#
062564	1		CHROME	394-4-CP	087206793103



Kohler® Forté®

Ceramic disc cartridge. 3-Hole installation. Adjustable center-to-center distance between handle installation holes (8"-16"). Metal sculpted lever handles. Includes metal pop-up assembly. 1.2 GPM maximum flow rate at 60 PSI. EPA WaterSense approved. CAL Green compliant. ADA compliant. Limited lifetime warranty.

STOCK#	PACK	CASE	DESCRIPTION	MFR#	UPC#
062562	1		CHROME	K10272-4-CP	087206817755



Widespread (Continued)



Peerless® Westchester®

Maximum 1.0 gpm @ 60 psi. 3.8 L/min @ 414 kPa. Widespread - 6" (152mm) to 16" (406mm) centers. 1/4 turn handle stops, 1/2"-14 NPSM adapters. Ceramic cartridge. Red/Blue indicator markings. Model have drain with pop-up type fitting with plated flange and stopper.

STOCK#	PACK	CASE	DESCRIPTION	MFR#	UPC#
062456	1	3	CHROME	P3523LF	034449883184
062457	1	3	BRUSHED NICKEL	P3523LF-BN	034449882699



Pfister® Arterra™

Ceramic disc cartridges. 3-hole installation. Adjustable center-to-center distance between handle installation holes (8"-14"). Includes metal pop-up assembly. 1.2 GPM maximum flow rate at 60 PSI. EPA WaterSense approved. CAL Green compliant. ADA Compliant. Lifetime warranty.

STOCK#	PACK	CASE	DESCRIPTION	MFR#	UPC#
060015	1	3	CHROME	LG49-DE0D	038877609002



Pfister® Pfirst Series™

Ceramic disc cartridges. 3-hole installation. Adjustable center-to-center distance between handle installation holes (8"-15"). Includes metal pop-up assembly. 1.2 GPM maximum flow rate at 60 PSI. EPA WaterSense approved. CAL Green compliant. ADA Compliant. Lifetime warranty.

STOCK#	PACK	CASE	DESCRIPTION	MFR#	UPC#
060089	1	3	CHROME	LG149-6100	038877607671
060154	1	3	BRUSHED NICKEL	LG149-610K	038877607688



Pfister® Arlington™

Ceramic disc cartridges. 3-hole installation. Adjustable center-to-center distance between handle installation holes (8"-15"). Metal lever handles. Includes push & seal pop-up. 1.2 GPM maximum flow rate at 60 PSI. EPA WaterSense approved. CAL Green compliant. ADA Compliant. Lifetime warranty.

STOCK#	PACK	CASE	DESCRIPTION	MFR#	UPC#
060092	1	2	TUSCAN BRONZE	LF049-ARYY	038877604267
060093	1	2	BRUSHED NICKEL	LF049-ARKK	038877605875



PROFLO® Alvord Series

Ceramic disc cartridges. Metal handles. With brass pop-up. Requires 3-hole sink with 8" on-center. Flow rate: 1.2 GPM at 60 psi. Meets ASME: A112.18.1 / CSA B125.1. ADA compliant. AB1953 certified. WaterSense certified cUPC/IAPMO listed.

STOCK#	PACK	CASE	DESCRIPTION	MFR#	UPC#
060205	1	6	CHROME	PFWSC6860CP	781889299678
060202	1	6	BRUSHED NICKEL	PFWSC6860BN	781889299661



PROFLO® PFWSC5260 Series

Ceramic disc cartridges. 3-hole installation. 8" center-to-center. Metal lever handles. Includes brass pop-up assembly. 1.2 GPM maximum flow rate at 60 PSI. EPA WaterSense approved. CAL Green compliant. Limited lifetime warranty.

STOCK#	PACK	CASE	DESCRIPTION	MFR#	UPC#
060251	1	6	CHROME	PFWSC5260CP	781889300039
060252	1	6	BRUSHED NICKEL	PFWSC5260BN	781889300022
060253	1	6	OIL RUBBED BRONZE	PFWSC5260ORB	781889300046

Widespread (Continued)

PROFLO® Willett Series

Ceramic disc cartridges. Metal handles. With brass pop-up. Requires 3-hole sink with 8" on-center. Flow rate: 1.2 GPM at 60 PSI. meets ANSI: A112.18.1M. AB 1953. Meets ANSI:A112.18.1M. ADA Compliant. cUPC/IAPMO Listed. WaterSense Certified.



STOCK#	PACK	CASE	DESCRIPTION	MFR#	UPC#
060203	1	6	CHROME	PFWSC2860CP	781889299418
060204	1	6	BRUSHED NICKEL	PFWSC2860BN	781889299401

Rohl® Acqui™

Quarter turn ceramic disc cartridges. 3-hole installation. Metal lever handles. 15-3/4" maximum spread distance. Metal lever handles. Fixed spout. Includes pop-up assembly. 1.2 GPM maximum flow rate at 60 PSI. EPA WaterSense approved. CAL Green compliant. ADA compliant. Limited lifetime warranty. No Warranty on Tuscan Brass Finish (TCB).



STOCK#	PACK	CASE	DESCRIPTION	MFR#	UPC#
060981	1		TUSCAN BRASS	A1409LMTCB2	824438194731

Tub and Shower Faucets

Single Handle

American Standard® Colony® Soft Trim

These interchangeable bath/shower trim kits from our casual Colony® Soft Collection all fit universal valves so you can update your bath/shower trim in minutes without having to replace the valve (sold separately). The FloWise® three-function showerhead uses 40% less water. Metal lever handles. Turbine Spray-1.5 GPM max. flow. Angle adjustable Shower arm and flange. Diverter tub spout (Tub/Shower trim). Less valve.



STOCK#	PACK	CASE	DESCRIPTION	MFR#	UPC#
060728	1		CHROME SHOWER ONLY TRIM	T675.507.002	012611417733
060733	1		CHROME TUB & SHOWER TRIM	T675.508.002	012611417757

American Standard® Rough-in Valves

Rough-in valve body for Colony®, Fluen®t, Tropic®, Dazzle®, Hampton®, Serin®, Berwick®, Town Square® and Times Square® valve trims.



STOCK#	PACK	CASE	DESCRIPTION	MFR#	UPC#
060790	1		PRESSURE BALANCE ROUGHT-IN BODY ONLY	R111	012611567971

Rough-in valve body for ColonySoft®, Princeton®, Reliant 3®, Seva®, Copeland®, Moments®, Portsmouth®, Ceramix®, Green Tea®, Town Square®, Studio®, and Quentin® valve trims.



STOCK#	PACK	CASE	DESCRIPTION	MFR#	UPC#
060791	1		PRESSURE BALANCE ROUGHT-IN BODY ONLY	R121	012611567919

Delta® Classic Monitor® 13 Series

Monitor pressure balance valve keeps water temperature within a safe +/-3 degrees F. helping to protect you from sudden changes in hot or cold water pressure. Complete unit includes trim and rough-in. Metal lever handle for ease of temperature control. 120° maximum handle rotation. 2.0 GPM at 60 psi. EPA WaterSense approved. CAL Green compliant. ADA compliant. Lifetime warranty.



STOCK#	PACK	CASE	DESCRIPTION	MFR#	UPC#
062574	1	3	TRIM & VALVE CHROME	1343	034449295192



Single Handle (Continued)

Delta® Classic Series TrimMonitor® 13 Series

Pressure balanced bath mixing valve trim. "-H2O" models include H2OKinetic® Technology showerhead. Maintains a balanced pressure of hot and cold water even when a valve is turned on or off elsewhere in the system. For use with MultiChoice® Universal rough valve body. (R10000 Series). Back-to-back installation capability. Solid brass forged body. Temperature only controlled with metal lever handle. Field adjustable to limit handle rotation into hot water zone. 120° maximum handle rotation. All parts replaceable from the front of the valve. Models with "SOS" suffix supplied with slip-on spout for 1/2" C.W.T. Models with "PD" suffix supplied with 6" long pull-down diverter spout (RP17453). Stem extension kit RP77991 can be ordered to allow for an additional 1-3/4" wall thickness. RP77991 ships with chrome escutcheon screws. For special finishes also order RP12630 escutcheon screws in desired finish.

STOCK#	PACK	CASE	DESCRIPTION	MFR#	UPC#
062573	1		TRIM ONLY CHROME	DT13420	034449518567

Delta® Lahara® Monitor® 17 Series

Monitor pressure balance valve keeps water temperature within a safe +/-3 degrees F. helping to protect you from sudden changes in hot or cold water pressure. With double lever handle. Complete unit includes trim and rough-in. 2.0 GPM at 80 psi. EPA WaterSense approved. CAL Green compliant. ADA compliant. Lifetime warranty.

STOCK#	PACK	CASE	DESCRIPTION	MFR#	UPC#
062578	1	3	TRIM & VALVE CHROME	174938	034449590846

Grohe® Groflex Tub/Shower Rough-in Valve

Inlets and outlets 1/2". Fixing points for front and back wall. Leakproof housing. Integrated service stops. Flushing plug. Removable protection cover with installation information. For use with the GrohFlex Bathroom Solution Kits (sold separately): Pressure Balance Valves and Thermostats. Single Function, Dual Function or Custom Shower.

STOCK#	PACK	CASE	DESCRIPTION	MFR#	UPC#
061050	1		UNIVERSAL ROUGH-IN KIT	35026000	400517689178

Kohler® Alteo

3-Hole installation. Raincan showerhead, Invigorating spray helps relieve tension. Trim Only, Valve Not Included. 2.0 GPM at 60 psi. EPA WaterSense approved. CAL Green compliant. ADA compliant. Lifetime warranty.

STOCK#	PACK	CASE	DESCRIPTION	MFR#	UPC#
062592	1	3	TRIM ONLY CHROME	KTS45104-4E-CP	885642360145
062594	1	3	TRIM ONLY BRUSHED NICKEL	KTS45104-4E-BN	885612360151

Kohler® Alteo®

Includes face plate with handle, bath spout, shower arm and flange. Single handle controls both on/off activation and temperature setting. Supplied with ADA compliant metal lever handle. Includes diverter bath spout with combination 1/2" NPT or slip fit connection. For use with any KOHLER showerhead. Complements the Alteo® faucet and accessory collections.

STOCK#	PACK	CASE	DESCRIPTION	MFR#	UPC#
062596	1	3	TRIM ONLY W/O SHOWERHEAD CHROME	TLS45104-4-CP	885612360168
062597	1	3	TRIM ONLY W/O SHOWERHEAD BRUSHED NICKEL	TLS45104-4-BN	885612360175

Kohler® Rite-Temp®

Valve body, pressure balance cartridge, rough-in guide and mud guard 1/2" Universal NPT & direct sweat inlets and outlets. 5.0 GPM maximum flow rate.

STOCK#	PACK	CASE	DESCRIPTION	MFR#	UPC#
061033	1	12	ROUGH-IN VALVE ONLY	K8304-K-NA	885612369192

Single Handle (Continued)

Pfister® Pfirst Series®

3-Hole installation. Raincan showerhead, Invigorating spray helps relieve tension. Trim only. Valve not included. 1.8 GPM at 60 psi. EPA WaterSense approved. CAL Green compliant. ADA compliant. Lifetime warranty.

STOCK#	PACK	CASE	DESCRIPTION	MFR#	UPC#
060283	1	3	CHROME - TRIM ONLY	LG89-0300	038877631102
060284	1	3	BRUSHED NICKEL - TRIM ONLY	LG89-030K	038877631119

Single Control Ceramic Disc Valve with integral stops. Valve body only, works for above trim kits. Dual 1/2" I.P. or 1/2" copper sweat connections.

STOCK#	PACK	CASE	DESCRIPTION	MFR#	UPC#
060099	1	3	VALVE BODY ONLY FOR ABOVE	OX8-310A	038877436561

2 & 3 Handles

Pfister® Verve Series - Two Handle

Ceramic disc cartridges. 4-Hole installation. Includes metal knob handles, flanges, decorative shower, showerhead and tub diverter spout. Showerhead settings: Massage, Mist, Rain, Soft. 1.8 GPM. EPA WaterSense approved. CAL Green compliant. Lifetime warranty.

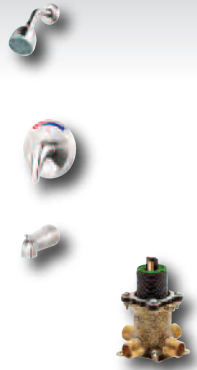
STOCK#	PACK	CASE	DESCRIPTION	MFR#	UPC#
060194	1	4	CHROME	LG03-6110	038877632345

Pfister® Verve Series - Three Handle

Ceramic disc cartridges. 5-Hole installation. Includes metal knob handles, flanges, showerhead, 5" IP threaded non-diverting tub spout. Showerhead settings: Massage, Mist, Rain, Soft. 2.0 GPM. EPA WaterSense approved. CAL Green compliant. Lifetime warranty.

STOCK#	PACK	CASE	DESCRIPTION	MFR#	UPC#
060190	1	4	TRIM & VALVE CHROME	G01-1110	038877613177

SECTION 10 • PAGE 24



Proposition 65 Warnings

Below is a listing of all items that come with a Proposition 65 Warning. All eligible items are in numerical order.

STOCK#	WARNING	CHEMICAL
060980	<!> Warning: Cancer and Reproductive Harm-www.p65warnings.ca.gov	Lead
060983	<!> Warning: Cancer and Reproductive Harm-www.p65warnings.ca.gov	Lead
061002	<!> Warning: Cancer and Reproductive Harm-www.p65warnings.ca.gov	Lead and lead compounds, Chromium (hexavalent compounds)
062578	<!> Warning: Cancer and Reproductive Harm-www.p65warnings.ca.gov	Lead
063300	<!> Warning: Cancer and Reproductive Harm-www.p65warnings.ca.gov	Lead
063308	<!> Warning: Cancer and Reproductive Harm-www.p65warnings.ca.gov	Lead
068020	<!> Warning: Cancer and Reproductive Harm-www.p65warnings.ca.gov	Lead
068027	<!> Warning: Cancer and Reproductive Harm-www.p65warnings.ca.gov	Lead
068030	<!> Warning: Cancer and Reproductive Harm-www.p65warnings.ca.gov	Lead
068055	<!> Warning: Cancer and Reproductive Harm-www.p65warnings.ca.gov	Lead
068058	<!> Warning: Cancer and Reproductive Harm-www.p65warnings.ca.gov	Lead
068077	<!> Warning: Cancer and Reproductive Harm-www.p65warnings.ca.gov	Lead
068090	<!> Warning: Cancer and Reproductive Harm-www.p65warnings.ca.gov	Lead
068100	<!> Warning: Cancer and Reproductive Harm-www.p65warnings.ca.gov	Lead
068230	<!> Warning: Cancer and Reproductive Harm-www.p65warnings.ca.gov	Lead
068235	<!> Warning: Cancer and Reproductive Harm-www.p65warnings.ca.gov	Lead
068250	<!> Warning: Cancer and Reproductive Harm-www.p65warnings.ca.gov	Lead
068260	<!> Warning: Cancer and Reproductive Harm-www.p65warnings.ca.gov	Lead
068267	<!> Warning: Cancer and Reproductive Harm-www.p65warnings.ca.gov	Lead
068315	<!> Warning: Cancer and Reproductive Harm-www.p65warnings.ca.gov	Lead
068505	<!> Warning: Cancer and Reproductive Harm-www.p65warnings.ca.gov	Lead